

Occupational Analyses Series

Recreation Vehicle Mechanic

2000

Interprovincial Partnerships and
Occupational Information Division

Division des Partenariats
interprovinciaux et Information sur
les carrières

Human Resources
Partnerships Directorate

Direction des partenariats
en ressources humaines

Disponible en français sous le titre :

Technicien/technicienne de véhicules
récréatifs

The Canadian Council of Directors of Apprenticeship (CCDA) recognizes this occupational analysis as the national standard for the occupation of recreation vehicle mechanic.

ACKNOWLEDGEMENTS

Human Resources Development Canada (HRDC) wishes to express sincere appreciation for the contribution of the many industrial establishments, professional associations, labour organizations, trades persons, provincial and territorial government departments and agencies, and all others who contributed to this publication.

Special acknowledgement is extended to Ann Dean and Rick Embree of Humber College, who developed the analysis with the following representatives from the recreation vehicle mechanic industry:

Roger Bruce	British Columbia
Brian Charles	Yukon
Dan Christakos	Saskatchewan
Nelson Denomme	Ontario
Gérard Dufresne	Quebec
Justin Gallant	Prince Edward Island
Ray Garrity	New Brunswick
Tom MacKay	Ontario
Philip Vernham	Alberta
Al Yzer	Manitoba

This analysis was prepared by the Human Resources Partnerships Directorate of HRDC in partnership with the Saskatchewan Apprenticeable Trades Coordinating Group (ATCoG). The overall planning and coordination of the development of this analysis were undertaken by staff members of HRDC's Interprovincial Partnerships and Occupational Information Division.

OTHER RELATED OCCUPATIONAL TITLES

This analysis covers tasks performed by a recreation vehicle mechanic whose occupational title has been identified by some provinces and territories of Canada under the following names:

- Recreation Vehicle Technician
- Recreation Vehicle Service Technician

LIST OF PUBLISHED OCCUPATIONAL ANALYSES *

TITLE	NOC** Code
Appliance Service Technician (1997)	7332
Aquaculture Technician (1977)	2221
Arts Administrator (1989)	0114
Automotive Painter (1995)	7322
Automotive Service Technician (1998)	7321
Automotive Technician - Automatic Transmission (1990)	7321
Automotive Technician - Electrical/Electronics (1992)	7321
Automotive Technician - Engine Repair and Fuel Systems (1989)	7321
Automotive Technician - Front-End (1989)	7321
Automotive Technician - Manual Transmission, Driveline and Brakes (1990)	7321
Aviation Machinist (1994)	7231
Baker (1997)	6252
Blaster (Surface) (1987)	7372
Boilermaker (1994)	7262
Bricklayer (2000)	7281
Cabinetmaker (2000)	7272
Carpenter (1998)	7271
Cement Finisher (1995)	7282
Construction Electrician (1994)	7241
Cook (1997)	6242
Electrical Rewind Mechanic (1999)	7333
Electronics Technician - Consumer Products (1997)	2242
Electronics Technician Vol. I (1986) (Video Equipment)	2242
Electronics Technician Vol. II (1986) (Audio Equipment)	2242

* Red Seal analyses are indicated in bold

** National Occupational Classification

Electronics Technician Vol. III (1986) (Computer Equipment)	2242
Electronics Technician Vol. IV (1986) (Office Equipment)	2242
Electronics Technician Vol. VI (1986) (Communication Equipment)	2242
Electronics Technician Vol. VII (1986) (Signaling Equipment)	2242
Electronics Technician Vol. VIII (1986) (Navigation Equipment)	2242
Electronics Technician Vol. IX (1986) (Video Game Equipment)	2242
Electronics Technician Vol. X (1987) (CADD Equipment)	2242
Electronics Technician Vol. XI (1987) (CAM Equipment)	2242
Electronics Technician Vol. XII (1987) (Robotics Equipment)	2242
Electronics Technician Vol. XIII (1987) (Biomedical and Laboratory Equipment)	2242
Electronics Technician Vol. XIV (1987) (Industrial Process-Control Equipment)	2243
Farm Equipment Mechanic (2000)	7312
Floorcovering Installer (1997)	7295
Glazier (1994)	7292
Hairstylist (1997)	6271
Heating (Gas and Oil) Servicer - Commercial and Industrial (1978)	7331
Heavy Duty Equipment Mechanic (1998)	7312
Heavy Equipment Operator (1983)	7421
Industrial Electrician (1997)	7242
Industrial Instrument Mechanic (2000)	2243
Industrial Mechanic (Millwright) (1999)	7311
Insulator (Heat and Frost) (2000)	7293
Ironworker (Generalist) (1993)	7264
Lather (Interior Systems Mechanic) (1994)	7284

Logistics (1992)	0713
Machinist (1998)	7231
Major Electrical Appliance Repairer (1984)	7332
Mobile Crane Operator (1997)	7371
Motorcycle Mechanic (1995)	7334
Motor Vehicle Body Repairer (Metal and Paint) (1997)	7322
New Home Builder and Residential Renovation Contractor (1992)	0712
Oil Burner Mechanic (1997)	7331
Painter and Decorator (2000)	7294
Partsperson (1995)	1472
Plumber (1996)	7251
Power Engineer (1997)	7351
Powerline Technician (1996)	7244
Recreation Vehicle Mechanic (2000)	7383
Refrigeration and Air Conditioning Mechanic (1997)	7313
Roofer (1997)	7291
Sheet Metal Worker (1997)	7261
Sprinkler System Installer (1995)	7252
Steamfitter-Pipefitter (1996)	7252
Steel Fabricator (Fitter) (1994)	7263
Tool and Die Maker (1997)	7232
Truck-Trailer Repairer (1994)	7321
Truck and Transport Mechanic (2000)	7321
Welder (1996)	7265

REQUESTS FOR THESE PUBLICATIONS SHOULD BE FORWARDED TO:

**Interprovincial Partnerships and Occupational Information Division
Human Resources Partnerships
Human Resources Development Canada
Place du Portage, Phase IV, 5th Floor
Hull, Quebec K1A 0J9**

FOREWORD

The first National Conference on Apprenticeship in Trades and Industries, held in Ottawa in 1952, recommended that the federal government be requested to co-operate with provincial apprenticeship committees and officials in preparing analyses of a number of skilled occupations. To this end, Human Resources Development Canada sponsors a program, under the guidance of the Canadian Council of Directors of Apprenticeship (CCDA), to develop a series of occupational analyses.

The Occupational Analysis Program has the following objectives:

- to identify and group the tasks performed by skilled workers in particular occupations;
- to identify those tasks that are performed by skilled workers in every province and territory;
- to develop instruments for use in the preparation of interprovincial standards "Red Seal" examinations and curricula for training leading to the certification of skilled workers;
- to facilitate the mobility, in Canada, of trainees and skilled workers;
- to supply employers and employees, and their associations, industries, training institutions and governments with analyses of the tasks performed in particular occupations.

TABLE OF CONTENTS

	<u>Page</u>
ACKNOWLEDGEMENTS	i
OTHER RELATED OCCUPATIONAL TITLES	ii
LIST OF PUBLISHED OCCUPATIONAL ANALYSES	iii
FOREWORD	vii

Guide to Analysis

DEVELOPMENT OF ANALYSIS	xv
STRUCTURE OF ANALYSIS	xv
VALIDATION METHOD	xvii
SCOPE OF THE RECREATION VEHICLE MECHANIC OCCUPATION	xix
OCCUPATIONAL OBSERVATIONS	xx
SAFETY	xxi

Analysis

BLOCK A FUNDAMENTAL OCCUPATIONAL SKILLS

Task 1	Demonstrates safe work practices.	3
Task 2	Utilizes drawings, codes, standards and service manuals.	5
Task 3	Utilizes tools and measuring equipment.	7
Task 4	Demonstrates common work practices and procedures.	12
Task 5	Provides customer service.	18

BLOCK B PLUMBING SYSTEMS

Task 6	Maintains potable water systems.	21
--------	----------------------------------	----

		<u>Page</u>	
	Task 7	Maintains waste water systems.	26
BLOCK C	ELECTRICAL		
	Task 8	Maintains AC electrical system.	29
	Task 9	Maintains DC electrical systems.	32
BLOCK D	LP GAS		
	Task 10	Maintains high pressure LP gas system.	36
	Task 11	Maintains low pressure LP gas systems.	38
BLOCK E	APPLIANCES		
	Task 12	Maintains furnaces and associated systems.	40
	Task 13	Maintains water heaters.	44
	Task 14	Maintains ranges and ovens.	47
	Task 15	Maintains refrigeration systems.	50
	Task 16	Maintains air conditioning and heat pump systems.	54
BLOCK F	INTERIOR COMPONENTS AND EXTERIOR SHELL		
	Task 17	Maintains interior components.	57
	Task 18	Maintains exterior components.	62
BLOCK G	TOWING AND CHASSIS COMPONENTS		
	Task 19	Maintains undercarriage components on towed vehicles.	69
	Task 20	Maintains braking systems.	73
	Task 21	Maintains hitching system.	76

		<u>Page</u>
BLOCK H	ACCESSORIES	
Task 22	Performs accessories/systems installations.	78
Task 23	Maintains accessories/systems.	85

Appendices

Appendix "A"	Tools and Equipment	97
Appendix "B"	Blocks and Tasks Weighting	99
Appendix "C"	Pie Chart	105
Appendix "D"	Task Profile Chart	107

GUIDE TO ANALYSIS

DEVELOPMENT OF ANALYSIS

A draft analysis is developed by a knowledgeable consultant who, with the assistance of a committee of industry experts in the field, identifies all the tasks performed in the occupation.

The draft is then assigned to occupational analysts at Human Resources Development Canada for translation and then returned to the consultant for review to ensure conformity with the nationally approved format.

The consultant will then forward a copy of this analysis to provincial/territorial authorities for validation by specialists in the field. Their recommendations are assessed and incorporated into the final draft which also includes the identification of the common core tasks performed in the occupation.

The occupational analysis is published in both official languages.

STRUCTURE OF ANALYSIS

To facilitate the understanding of the nature of the occupation, the work performed is divided into the following divisions:

- A. **BLOCK** - is the largest division within the analysis and reflects a distinct operation relevant to the occupation.
- B. **TASK** - is the distinct activity that, combined with others, makes up the logical and necessary steps the worker is required to perform to complete a specific assignment within a "BLOCK".
- C. **SUB-TASK** - is the smallest division into which it is practical to subdivide any work activity and, combined with others, fully describes all duties constituting a "TASK".

Supporting Knowledge & Abilities

The element of skill and knowledge that an individual must acquire to adequately perform the task is identified under this heading.

Trends

Any shifts or changes in technology which affects the block are identified under this heading.

Related Components

All components of a specified task being undertaken by the recreation vehicle mechanic are identified under this heading.

Tools and Equipment

All tools and equipment necessary for the recreation vehicle mechanic to complete a task are identified under this heading.

VALIDATION METHOD

At the request of the Canadian Council of Directors of Apprenticeship (CCDA), the Standardization SubCommittee developed a method for the validation of the national Red Seal occupational analyses.

A draft of the analysis is sent to all provinces/territories for validation. Each jurisdiction rates the sub-tasks and applies percentage ratings to blocks and tasks. This method for the validation of the national occupational analyses identifies common core tasks across Canada for a specific occupation. This feature facilitates the weighting of the Interprovincial Red Seal examinations.

DEFINITIONS

YES:	the sub-task is performed by workers in the occupation in a specific jurisdiction.
NO:	the sub-task is not performed by workers in the occupation in a specific jurisdiction.
BLOCK %:	the average number of questions (items), derived from the collective decision made by workers within the occupation from all areas of Canada, which will be placed on an interprovincial examination to assess each block of the analysis.
TASK %:	the average number of questions (items), derived from the collective decision made by workers within the occupation from all areas of Canada, which will be placed on an interprovincial examination to assess each task of the analysis.
NV:	<u>N</u> ot <u>V</u> alidated by a province/territory.
ND:	<u>N</u> ot <u>D</u> esignated in a province/territory.

PROVINCIAL/TERRITORIAL ABBREVIATIONS

NF:	Newfoundland and Labrador
NS:	Nova Scotia
PE:	Prince Edward Island
NB:	New Brunswick
QC:	Quebec
ON:	Ontario
MB:	Manitoba
SK:	Saskatchewan
AB:	Alberta
BC:	British Columbia
NT:	Northwest Territories
YK:	Yukon

COMMON CORE

The criteria for determining common core are dependant on the performance of sub-tasks. If 70 percent of the responding jurisdictions (excluding NVs and NDs) perform the sub-task, it shall be considered common core.

Interprovincial Red Seal examinations are based on the common core identified through this validation process. This process identifies what will be assessed through the interprovincial examination.

BLOCKS AND TASKS WEIGHTING (APPENDIX "B")

This appendix represents the block and task percentages as submitted by each jurisdiction.

Each jurisdiction, with the use of a provincial/territorial occupational advisory committee, validates the content, places percentages on blocks and tasks, and indicates whether or not the sub-tasks are performed by the skilled workers within the occupation. The results of this exercise are submitted to the consultant who then analyzes the data and develops this appendix which provides the individual jurisdictional validation results as well as the national averages of all responses.

PIE CHART (APPENDIX "C")

The graph depicts the national percentages assigned to blocks in the analysis.

SCOPE OF THE RECREATION VEHICLE MECHANIC

This occupational analysis identifies tasks that a qualified RV mechanic is called upon to perform in Canada. An RV mechanic is a tradesperson who possesses a full range of knowledge, abilities and skills required to troubleshoot, disassemble, repair, assemble, install, adjust, test, maintain and modify components and systems, on Class A, B, and C motorhomes, holiday trailers, fifth wheel trailers, park model trailers, truck campers and tent trailers. RV mechanics are also required to work on utility, flat deck trailers, construction living trailers and an assortment of mobile vehicles.

RV mechanics must be versatile. The vehicles they work on can be very expensive. The RV mechanic can be under pressure to repair the vehicle in a quick and expedient manner. The recreation vehicle mechanic's skill at using varied hand and power tools and test instruments allows him or her to install and repair appliances, siding, roofs, windows, doors, vents, awnings, floor coverings, plumbing systems, electrical systems, propane gas systems, batteries and charging systems, trailer braking systems, TV antennas, light plants and hitches as well as doing fibreglass/body repairs.

RV mechanics must be conscious of the impact on people, equipment, work area and the environment when working. Safety is important due to the wide range of systems which include; hydraulic systems, brake systems, propane detection systems and electrical systems.

RV mechanics must call on their knowledge of mechanical systems, electric systems, plumbing systems, RV construction processes, LPG distribution systems and material characteristics. Though not described in this analysis as knowledge, skills or attitudes, some important attributes of the RV mechanic include: mechanical and mathematical aptitude, an ability to plan and think sequentially, an ability to work as a team member and possess good spatial concepts. As an essential part of the recreation vehicle service trade, the mechanics endeavor to align themselves with new technological advances and ever changing techniques and procedures in their industry.

The functions of RV mechanics may overlap with other trades such as parts person, automotive service technician, electrician, plumber, gas fitter, carpenter, welder and auto body repair person.

OCCUPATIONAL OBSERVATIONS

Some important observations and significant trends emerged from this National Analysis of the Recreational Vehicle Mechanic occupation. These observations and trends are briefly outlined in this section.

The recreation vehicle mechanic is a "jack-of-all-trades", repairing and maintaining all internal and external systems associated with a recreation vehicle except engine and drive train components. The individual requires skills related to plumbing, electrical, gas fitting, carpentry, floor covering, glacier and auto body repair. The diversity of equipment they work on goes from the largest A Class self-propelled motor home to the smallest tent trailer and everything in between. Employers are looking for individuals with the skills related to the construction sector and mode of power industry.

The recreation vehicle mechanic is employed by a variety of types of companies including dealerships, manufacturers and service and rental shops.

SAFETY

Safe working procedures and conditions, accident prevention and the preservation of health are of primary importance to industry in Canada. These responsibilities are shared and require the joint efforts of government, employers and employees. It is imperative that all parties become aware of circumstances which may lead to injury or harm. Safe learning experiences and environments can be created by controlling the variables and behaviours that may contribute to cause an accident or injury.

It is generally recognized that a safety-conscious attitude and work practices contribute to a healthy, safe and accident-free working environment.

It is imperative to apply and be familiar with the Occupational Health and Safety Act and Regulations. As well, it's essential to determine workplace hazards and take measures to protect oneself, co-workers, the public and the environment.

As safety education is an integral part of a training in all jurisdictions, personal safety practices are not recorded in this document. However, the technical safety aspect relating to each task and sub-task are included throughout this analysis.

ANALYSIS

BLOCK A

FUNDAMENTAL OCCUPATIONAL SKILLS

Trends: Towards a greater importance placed on customer satisfaction.

Task 1 Demonstrates safe work practices.

Related Safety Documentation/Supplies: WHMIS regulations, occupational health and safety regulations, CAW/CSA, gloves, face shields, safety glasses, goggles, ear muffs, fire extinguishers, first aid station, eye wash station.

Tools and Equipment: None.

Sub-task

1.01 Complies with government and occupational health and safety regulations and procedures.

Supporting Knowledge & Abilities

<u>NF</u>	<u>NS</u>	<u>PE</u>	<u>NB</u>	<u>QC</u>	<u>ON</u>	<u>MB</u>	<u>SK</u>	<u>AB</u>	<u>BC</u>	<u>NT</u>	<u>YK</u>
ND	yes	yes	yes	yes	yes	yes	ND	yes	yes	ND	yes

1.01.01 knowledge of potential safety hazards such as fumes, chemicals, electrical and fire hazards

1.01.02 knowledge of work practice hazards such as power tools, hand tools, torches, hoists

1.01.03 knowledge of applicable safety act and regulation, Workplace Hazardous Material Information System (WHMIS) as Provincial WCB and related Occupation Health and Safety Act

1.01.04 knowledge of federal chlorofluorohydrocarbons regulations (CFC)

1.01.05 knowledge of fuel safety branch regulations

1.01.06 knowledge of code requirements

1.01.07 knowledge of requirement to report accidents and incidents

Supporting Knowledge & Abilities

- 1.01.08 knowledge of employees and employer responsibilities under provincial and federal regulations
- 1.01.09 knowledge of due diligence
- 1.01.10 ability to recognize hazards and safety violations

Sub-task

1.02 Utilizes personal protective equipment.

Supporting Knowledge & Abilities

<u>NF</u>	<u>NS</u>	<u>PE</u>	<u>NB</u>	<u>QC</u>	<u>ON</u>	<u>MB</u>	<u>SK</u>	<u>AB</u>	<u>BC</u>	<u>NT</u>	<u>YK</u>
ND	yes	yes	yes	yes	yes	yes	ND	yes	yes	ND	yes

- 1.02.01 knowledge of types of personal protective equipment
- 1.02.02 knowledge of dangers associated with jewelry, loose clothing and long hair when working with machinery
- 1.02.03 knowledge of maintenance and adjusting procedures for protective equipment
- 1.02.04 knowledge of location of safety equipment
- 1.02.05 knowledge of operating procedures for safety equipment
- 1.02.06 ability to maintain and adjust protective equipment
- 1.02.07 ability to operate safety equipment

Sub-task

1.03 Maintains work area.

Supporting Knowledge & Abilities

<u>NF</u>	<u>NS</u>	<u>PE</u>	<u>NB</u>	<u>QC</u>	<u>ON</u>	<u>MB</u>	<u>SK</u>	<u>AB</u>	<u>BC</u>	<u>NT</u>	<u>YK</u>
ND	yes	yes	yes	yes	yes	yes	ND	yes	yes	ND	yes

Supporting Knowledge & Abilities

- 1.03.01 knowledge of waste disposal procedures
- 1.03.02 knowledge of procedures for maintaining cleanliness in the work area
- 1.03.03 knowledge of procedures for cleaning up spills
- 1.03.04 knowledge of procedures for removing debris and hazards
- 1.03.05 knowledge of procedures for storing and handling products, such as acetylene, oxygen, propane, butane, chemicals, sealants, solvents, adhesives and refrigerants
- 1.03.06 knowledge of lockout procedures
- 1.03.07 ability to store tools and equipment
- 1.03.08 ability to recognize safety hazards associated with propane gas, acetylene, oxygen, butane and electrical panels, wiring and appliances

Task 2 Utilizes drawings, codes, standards and service manuals.

Related Components: Drawings, electrical codes, propane codes, CSA codes for RV's.

Tools and Equipment: Measuring tape, calculators.

Sub-task

2.01 Interprets blueprints, drawings and schematics.

Supporting Knowledge & Abilities

<u>NF</u>	<u>NS</u>	<u>PE</u>	<u>NB</u>	<u>QC</u>	<u>ON</u>	<u>MB</u>	<u>SK</u>	<u>AB</u>	<u>BC</u>	<u>NT</u>	<u>YK</u>
ND	yes	yes	yes	yes	yes	yes	ND	yes	yes	ND	no

2.01.01 knowledge of information contained in blueprints and drawings

2.01.02 knowledge of mechanical, hydraulic, electronic and electrical symbols that indicate location of devices, routing of wire, vents, plumbing and specific system notes

Supporting Knowledge & Abilities

- 2.01.03 knowledge of acquisition and storage procedures
- 2.01.04 ability to overlay blueprints to produce "3D" picture
- 2.01.05 ability to convert schematics to ladder diagrams
- 2.01.06 ability to locate symbols, dimensions, materials and specifications
- 2.01.07 ability to perform metric conversions

Sub-task

2.02 Interprets codes, trade standards and government regulations.

Supporting Knowledge & Abilities

<u>NF</u>	<u>NS</u>	<u>PE</u>	<u>NB</u>	<u>QC</u>	<u>ON</u>	<u>MB</u>	<u>SK</u>	<u>AB</u>	<u>BC</u>	<u>NT</u>	<u>YK</u>
ND	yes	yes	yes	yes	yes	yes	ND	yes	yes	ND	yes

- 2.02.01 knowledge of codes, trade standards and government regulations such as propane codes, electrical codes, plumbing codes, occupational health and safety acts, CSA and other applicable codes
- 2.02.02 knowledge of types of vehicles, parts, components and assemblies
- 2.02.03 ability to identify type and model of vehicle, component, part

Sub-task

2.03 Interprets service literature.

Supporting Knowledge & Abilities

<u>NF</u>	<u>NS</u>	<u>PE</u>	<u>NB</u>	<u>QC</u>	<u>ON</u>	<u>MB</u>	<u>SK</u>	<u>AB</u>	<u>BC</u>	<u>NT</u>	<u>YK</u>
ND	yes	yes	yes	yes	yes	yes	ND	yes	yes	ND	yes

- 2.03.01 knowledge of service literature including shop manuals, maintenance manuals, bulletins and parts catalogues

Supporting Knowledge & Abilities

- 2.03.02 knowledge of repair sequences, repair diagrams and flow charts
- 2.03.03 knowledge of location of service information in manuals, technical bulletins, service supplements and parts catalogues
- 2.03.04 ability to identify repair procedures and to select test equipment, tools and replacement parts
- 2.03.05 ability to read wiring schematics, assembly drawings
- 2.03.06 ability to interpret repair sequence, repair diagrams and flow charts
- 2.03.07 ability to research specifications for repairs

Task 3 Utilizes tools and measuring equipment.

Related Components: Hammers, saws, files, screwdrivers, socket sets, wrenches, pliers, drivers, grinders, drill presses, sanders, staplers, wire cutters, wire crimpers, tap and die set, tube cutter, pry bar, inspection lights, clamps, impact wrenches, hole saw, reciprocating saw, tube benders, tape measures, vernier calipers, straight edge, multimeters, pressure gauges, drill bits, drivers, gas leak detectors, manometers, thermometers, air flow meters, squares, levels, utility knives, circuit board testers, nibblers and shears, rivet guns, caulking guns, chisels, awl, protractors, dividers, scribes.

Tools and Equipment: Grinders, lubricants, cleaning solvents, cleaning rags, filters, batteries.

Sub-task

3.01 Uses hand tools.

Supporting Knowledge & Abilities

<u>NF</u>	<u>NS</u>	<u>PE</u>	<u>NB</u>	<u>QC</u>	<u>ON</u>	<u>MB</u>	<u>SK</u>	<u>AB</u>	<u>BC</u>	<u>NT</u>	<u>YK</u>
ND	yes	yes	yes	yes	yes	yes	ND	yes	yes	ND	yes

Supporting Knowledge & Abilities

- 3.01.01 knowledge of purpose, types, styles and operation of hand tools
- 3.01.02 knowledge of manufacturers instructions for the safe use and maintenance of hand tools
- 3.01.03 knowledge of standard imperial and metric tool sizes
- 3.01.04 ability to select hand tools
- 3.01.05 ability to use measuring and layout tools
- 3.01.06 ability to use cutting tools
- 3.01.07 ability to use fastening hand tools
- 3.01.08 ability to use dismantling tools
- 3.01.09 ability to sharpen hand tools
- 3.01.10 ability to clean and lubricate hand tools
- 3.01.11 ability to store hand tools

Sub-task

3.02 Operates portable power tools.

Supporting Knowledge & Abilities

<u>NF</u>	<u>NS</u>	<u>PE</u>	<u>NB</u>	<u>QC</u>	<u>ON</u>	<u>MB</u>	<u>SK</u>	<u>AB</u>	<u>BC</u>	<u>NT</u>	<u>YK</u>
ND	yes	yes	yes	yes	yes	yes	ND	yes	yes	ND	yes

- 3.02.01 knowledge of purpose, types, style and operation of power tools
- 3.02.02 knowledge of manufacturers instructions for use and maintenance of power tools
- 3.02.03 ability to select portable power tools
- 3.02.04 ability to use portable power saws
- 3.02.05 ability to use portable power drills

Supporting Knowledge & Abilities

- 3.02.06 ability to use portable routing and planing tools
- 3.02.07 ability to use impact tools
- 3.02.08 ability to use sealants and glue guns
- 3.02.09 ability to use abrading and polishing tools
- 3.02.10 ability to use fastening tools
- 3.02.11 ability to use nibblers and shears
- 3.02.12 ability to use jacks
- 3.02.13 ability to clean and lubricate portable power tools
- 3.02.14 ability to store portable power tools
- 3.02.15 ability to maintain portable power tools such as changing power cords, repairing pneumatic hoses, replacing filters and batteries

Sub-task

3.03 Operates stationary power tools and lifting equipment.

Supporting Knowledge & Abilities

<u>NF</u>	<u>NS</u>	<u>PE</u>	<u>NB</u>	<u>QC</u>	<u>ON</u>	<u>MB</u>	<u>SK</u>	<u>AB</u>	<u>BC</u>	<u>NT</u>	<u>YK</u>
ND	yes	yes	yes	yes	yes	yes	ND	yes	yes	ND	yes

- 3.03.01 knowledge of purpose, types, and operation of stationary power tools and lifting equipment
- 3.03.02 knowledge of manufacturers instructions for the safe use and maintenance of stationary power tools and lifting equipment
- 3.03.03 ability to select stationary power tools
- 3.03.04 ability to use stationary saws such as band, table, radial arm, chop
- 3.03.05 ability to use stationary drilling and boring tools

Supporting Knowledge & Abilities

- 3.03.06 ability to use metal brakes and shears
- 3.03.07 ability to use hoists
- 3.03.08 ability to clean and lubricate stationary power tools
- 3.03.09 ability to sharpen tooling such as saw blades and tool bits
- 3.03.10 ability to store tooling
- 3.03.11 ability to maintain stationary power tools

Sub-task

3.04 Operates measuring equipment.

Supporting Knowledge & Abilities

<u>NF</u>	<u>NS</u>	<u>PE</u>	<u>NB</u>	<u>QC</u>	<u>ON</u>	<u>MB</u>	<u>SK</u>	<u>AB</u>	<u>BC</u>	<u>NT</u>	<u>YK</u>
ND	yes	yes	yes	yes	yes	yes	ND	yes	yes	ND	yes

- 3.04.01 knowledge of purpose, design and operating techniques for precision measuring devices
- 3.04.02 knowledge of manufacturers instructions for operating and maintaining measuring devices
- 3.04.03 knowledge of accuracy of measuring devices and approximation of error
- 3.04.04 ability to select precision measuring device
- 3.04.05 ability to distinguish between metric and imperial measuring devices
- 3.04.06 ability to use dimensional measuring devices such as tapes, micrometers and verniers
- 3.04.07 ability to use alignment and leveling measuring devices such as straight edge and squares
- 3.04.08 ability to use layout measuring tools such as dividers, protractors, squares, scribes, centre punches, awls

Supporting Knowledge & Abilities

- 3.04.09 ability to calibrate measuring equipment
- 3.04.10 ability to clean and lubricate measuring equipment
- 3.04.11 ability to store measuring equipment

Sub-task

3.05 Operates test equipment.

Supporting Knowledge & Abilities

NF NS PE NB QC
ND yes yes yes yes

ON MB SK AB BC NT YK
yes yes ND yes yes ND yes

- 3.05.01 knowledge of types, construction and uses of testing devices such as pressure gauges, carbon monoxide detector, thermometers, multimeters, air flow meters, manometers, ignition tester refrigerator diagnostic tools, liquid propane leak detector
- 3.05.02 knowledge of accuracy of testing devices
- 3.05.03 ability to measure temperatures
- 3.05.04 ability to measure electrical values
- 3.05.05 ability to measure pressure
- 3.05.06 ability to measure volume of air moving through ducting
- 3.05.07 ability to check testing devices for accuracy and calibration
- 3.05.08 ability to adjust measuring devices
- 3.05.09 ability to store measuring devices

Task 4 Demonstrates common work practices and procedures.

Related Components: Tubing, hoses, piping, compression fittings, elbows, T joints, Y joints, solvents, glues, ABS, PVC and PEX tubing, wiring, terminations, soldering, fasteners, sealants, adhesives, gaskets and gasket material, gas cutting equipment, arc welding equipment, solvent baths, component cleaning procedures, plastic welding techniques, vehicle preventative maintenance sketch preparation.

Tools and Equipment: Flaring tools, hand tools, pipe reamer, pipe wrenches, soldering gun, crimpers, wire strippers, power tools, power washers, solvent baths, caustic baths, brake cleaners, heat gun, plastic rod.

Sub-task

4.01 Installs tubing, piping, hoses and fittings. Supporting Knowledge & Abilities

<u>NF</u>	<u>NS</u>	<u>PE</u>	<u>NB</u>	<u>QC</u>	<u>ON</u>	<u>MB</u>	<u>SK</u>	<u>AB</u>	<u>BC</u>	<u>NT</u>	<u>YK</u>
ND	yes	yes	yes	yes	yes	yes	ND	yes	yes	ND	yes

- 4.01.01 knowledge of properties of fluids and the effects of temperature and pressure
- 4.01.02 knowledge of types, applications and properties of tubing
- 4.01.03 knowledge of types, applications and properties of piping
- 4.01.04 knowledge of types, applications and properties of hoses
- 4.01.05 knowledge of types, applications and properties of fittings
- 4.01.06 ability to select tubing, piping, hoses and fittings
- 4.01.07 ability to repair hoses, piping, tubing and fittings
- 4.01.08 ability to connect hoses, piping, tubing and fittings
- 4.01.09 ability to splice piping, tubing and hoses

Supporting Knowledge & Abilities

- 4.01.10 ability to cut piping, hoses and tubing
- 4.01.11 ability to bend and flare tubing

Sub-task

4.02 Installs wiring and connectors.

Supporting Knowledge & Abilities

<u>NF</u>	<u>NS</u>	<u>PE</u>	<u>NB</u>	<u>QC</u>	<u>ON</u>	<u>MB</u>	<u>SK</u>	<u>AB</u>	<u>BC</u>	<u>NT</u>	<u>YK</u>
ND	yes	yes	yes	yes	yes	yes	ND	yes	yes	ND	yes

- 4.02.01 knowledge of types of wiring harnesses and connectors
- 4.02.02 knowledge of construction, composition and operation of wiring circuits
- 4.02.03 knowledge of symptoms of wiring malfunctions, such as interrupted circuits, loose connections, burnt or broken wiring, corroded connections
- 4.02.04 ability to conduct static and dynamic testing of wiring and circuits
- 4.02.05 ability to route and secure wiring
- 4.02.06 ability to terminate wiring
- 4.02.07 ability to splice wiring
- 4.02.08 ability to insulate wire connections

Sub-task

4.03 Applies fasteners, sealants, adhesives and gaskets.

Supporting Knowledge & Abilities

<u>NF</u>	<u>NS</u>	<u>PE</u>	<u>NB</u>	<u>QC</u>	<u>ON</u>	<u>MB</u>	<u>SK</u>	<u>AB</u>	<u>BC</u>	<u>NT</u>	<u>YK</u>
ND	yes	yes	yes	yes	yes	yes	ND	yes	yes	ND	yes

- 4.03.01 knowledge of types, styles, construction, application and selection criteria for fastening devices

Supporting Knowledge & Abilities

- 4.03.02 knowledge of galvanic corrosion
- 4.03.03 knowledge of methods and applications for locking fastening devices
- 4.03.04 knowledge of types and properties of sealants
- 4.03.05 knowledge of conditions under which sealants are subjected to pressure, compatibility, conformity
- 4.03.06 knowledge of adhesive types and properties
- 4.03.07 knowledge of compatibility of adhesives with material to be bonded
- 4.03.08 knowledge of styles, construction and application of gaskets and gasket materials
- 4.03.09 knowledge of conditions to which gaskets are subjected
- 4.03.10 knowledge of manufacturers recommendations regarding replacement servicing and maintenance of gaskets
- 4.03.11 ability to remove broken bolts and studs
- 4.03.12 ability to clean, lubricate and maintain threads on fasteners
- 4.03.13 ability to select fasteners, sealants, adhesives and gaskets
- 4.03.14 ability to install fastener locking and sealing chemicals
- 4.03.15 ability to apply sealants
- 4.03.16 ability to mix and apply adhesives
- 4.03.17 ability to install gaskets and gasket materials

Sub-task

4.04 Performs trade related welding operations.

Supporting Knowledge & Abilities

(NOT COMMON CORE)

<u>NF</u> ND	<u>NS</u> yes	<u>PE</u> no	<u>NB</u> no	<u>QC</u> yes	<u>ON</u> yes	<u>MB</u> yes	<u>SK</u> ND	<u>AB</u> yes	<u>BC</u> no	<u>NT</u> ND	<u>YK</u> yes
					4.04.01			knowledge of provincial licensing requirements for welding			
					4.04.02			knowledge of ventilation and local and general dilution requirements			
					4.04.03			knowledge of design function and application of components of gas welding equipment			
					4.04.04			knowledge of design, function and application of components of arc, oxyacetylene and mig welding equipment			
					4.04.05			knowledge of safety precautions and protective equipment required for welding operations			
					4.04.06			knowledge of cutting torch techniques			
					4.04.07			ability to set-up and store welding equipment			
					4.04.08			ability to set-up and store arc and mig welding equipment			
					4.04.09			ability to prepare surfaces for welding			
					4.04.10			ability to weld and braze materials			
					4.04.11			ability to run single and multiple beads			
					4.04.12			ability to maintain welding equipment			
					4.04.13			ability to fabricate metal products			

Sub-task

4.05 Performs plastic welding operations.

Supporting Knowledge & Abilities

<u>NF</u> ND	<u>NS</u> no	<u>PE</u> yes	<u>NB</u> yes	<u>QC</u> yes	<u>ON</u> yes	<u>MB</u> yes	<u>SK</u> ND	<u>AB</u> yes	<u>BC</u> yes	<u>NT</u> ND	<u>YK</u> yes
-----------------	-----------------	------------------	------------------	------------------	------------------	------------------	-----------------	------------------	------------------	-----------------	------------------

Supporting Knowledge & Abilities

4.05.01	knowledge of the compatibility of different types of plastics
4.05.02	knowledge of plastic welding techniques
4.05.03	knowledge of types and operation of plastic welding
4.05.04	ability to clean plastic surfaces
4.05.05	ability to prepare joints and cracks for repair
4.05.06	ability to run plastic beads
4.05.07	ability to build up plastic pads
4.05.08	ability to test adhesion and strength of plastic welds

Sub-task

4.06 Cleans parts and components.

Supporting Knowledge & Abilities

NF NS PE NB QC
ND yes yes yes yes

ON MB SK AB BC NT YK
yes yes ND yes yes ND yes

4.06.01	knowledge of operating procedures for cleaning equipment such as pressure washers, solvent washers, sand blasters, parts cleaning equipment
4.06.02	knowledge of protective equipment requirements
4.06.03	knowledge of hazards associated with brake cleaning
4.06.04	knowledge of maintenance procedures for cleaning equipment
4.06.05	ability to prepare components and assemblies for cleaning
4.06.06	ability to select cleaning agents

Sub-task**4.07 Prepares sketches.****Supporting Knowledge & Abilities**

<u>NF</u>	<u>NS</u>	<u>PE</u>	<u>NB</u>	<u>QC</u>	<u>ON</u>	<u>MB</u>	<u>SK</u>	<u>AB</u>	<u>BC</u>	<u>NT</u>	<u>YK</u>
ND	yes	yes	yes	yes	yes	yes	ND	yes	yes	ND	no
					4.07.01		knowledge of mechanical, hydraulic and electrical symbols				
					4.07.02		knowledge of drawing scales				
					4.07.03		ability to measure dimensions				
					4.07.04		ability to sketch vapour propane gas system modifications				
					4.07.05		ability to sketch water system modifications				
					4.07.06		ability to sketch electrical system modifications				
					4.07.07		ability to sketch modifications to cabinetry				

Sub-task**4.08 Performs recreational vehicle preventative maintenance.****Supporting Knowledge & Abilities**

<u>NF</u>	<u>NS</u>	<u>PE</u>	<u>NB</u>	<u>QC</u>	<u>ON</u>	<u>MB</u>	<u>SK</u>	<u>AB</u>	<u>BC</u>	<u>NT</u>	<u>YK</u>
ND	yes	yes	yes	yes	yes	yes	ND	yes	yes	ND	yes
					4.08.01		knowledge of required preventative maintenance procedures				
					4.08.02		knowledge of equipment required to perform preventative maintenance				
					4.08.03		ability to test LP gas systems				
					4.08.04		ability to service and adjust appliance				
					4.08.05		ability to test ground fault interrupt circuits				
					4.08.06		ability to winterize coach				

Supporting Knowledge & Abilities

- 4.08.07 ability to check safety items
- 4.08.08 ability to check and lube doors
- 4.08.09 ability to check lights
- 4.08.10 ability to check window and roof moulding seals
- 4.08.11 ability to change oil and filters
- 4.08.12 ability to lubricate chassis
- 4.08.13 ability to inspect and top-up fluids
- 4.08.14 ability to service batteries
- 4.08.15 ability to check wiper blades
- 4.08.16 ability to inspect belts and hoses
- 4.08.17 ability to visually inspect chassis
- 4.08.18 ability to check lug nuts and tire pressures
- 4.08.19 ability to test drive vehicle
- 4.08.20 ability to check and set-up hitching system

Task 5 Provides customer service.

Related Components: Active listening skills, interpersonal skills, conflict resolution skills, communication skills, cross-cultural communication skills, documentation skills, negotiation skills.

Tools and Equipment: Work orders, customer files, customer satisfaction questionnaires.

Sub-task

5.01 Develops customer relations. Supporting Knowledge & Abilities

<u>NF</u>	<u>NS</u>	<u>PE</u>	<u>NB</u>	<u>QC</u>	<u>ON</u>	<u>MB</u>	<u>SK</u>	<u>AB</u>	<u>BC</u>	<u>NT</u>	<u>YK</u>
ND	yes	yes	yes	yes	yes	yes	ND	yes	yes	ND	yes

Supporting Knowledge & Abilities

- 5.01.01 knowledge of effective communication techniques
- 5.01.02 knowledge of body language meaning
- 5.01.03 knowledge of techniques for resolving conflicts
- 5.01.04 knowledge of other cultures
- 5.01.05 ability to listen actively
- 5.01.06 ability to ask direct questions
- 5.01.07 ability to clarify responses
- 5.01.08 ability to empathize with customers
- 5.01.09 ability to develop alternate solutions to conflicts or disagreements
- 5.01.10 ability to negotiate resolution to conflicts or disagreements
- 5.01.11 ability to build trust and rapport
- 5.01.12 ability to respond to customer inquiries in person or on the phone
- 5.01.13 ability to provide suggestions and helpful hints to customers
- 5.01.14 ability to act courteously
- 5.01.15 ability to document customer concerns
- 5.01.16 ability to follow-up promptly with customer
- 5.01.17 ability to maintain clean work area
- 5.01.18 ability to demonstrate concern for customers property through the use of protective coverings
- 5.01.19 ability to return replaced parts

Sub-task**5.02 Maintains service records.****Supporting Knowledge & Abilities**

<u>NF</u>	<u>NS</u>	<u>PE</u>	<u>NB</u>	<u>QC</u>	<u>ON</u>	<u>MB</u>	<u>SK</u>	<u>AB</u>	<u>BC</u>	<u>NT</u>	<u>YK</u>	
ND	yes	yes	yes	yes	yes	yes	ND	yes	yes	ND	yes	
					5.02.01							knowledge of essential requirements of work orders
					5.02.02							knowledge of warranty coverage
					5.02.03							knowledge of company purchasing procedures
					5.02.04							knowledge of parts requisitioning and return procedures
					5.02.05							knowledge of standard rates, work hours expended and work in progress
					5.02.06							knowledge of company time recording procedures
					5.02.07							knowledge of repair report writing
					5.02.08							ability to complete work orders
					5.02.09							ability to complete purchase orders
					5.02.10							ability to complete parts requisition forms
					5.02.11							ability to document consumables used
					5.02.12							ability to complete timesheets
					5.02.13							ability to complete warranty documentation

BLOCK B

PLUMBING SYSTEMS

Trends: Towards the use of PEX and CPUC tubing, external showers, city water to fill potable water fill. Polybutyl tubing is obsolete. With respect to wastewater, there is a trend towards electric gate valves, telescope sewer dump, macerator dump system, tank heaters, and non-toxic chemicals (non-formaldehyde).

Task 6 Maintains potable water systems.

Related Components: Fresh water tank, tank drain, inlet tubing, fresh water fill piping, tubing and fittings, vents, clamps, vent hose, tie down, sediment filter, pump, accumulator, faucets, shower heads, city water regulator, toilets, sinks, tubs, line drains, hot water heater bypasses, shutoff-off valves, drinking water filter, Teflon tape, pipe tape, sealant, solder, flux, crimps, hardware, antifreeze, water fresheners, butt connector, cements, solvents, silicon, putty tape.

Tools and Equipment: Crimping tools, wrenches, channel locks, basin wrench, screwdrivers, pliers, propane torch, blow-out plug, pipe cutter, hack saw, flaring tool, vice grips, tape measure, faucet wrench, hammer, utility knife, spin weld drivers, electric drill, drill bits, hole bits, saws, router.

Sub-task

6.01 Replaces storage tanks and components.

Supporting Knowledge & Abilities

<u>NF</u>	<u>NS</u>	<u>PE</u>	<u>NB</u>	<u>QC</u>	<u>ON</u>	<u>MB</u>	<u>SK</u>	<u>AB</u>	<u>BC</u>	<u>NT</u>	<u>YK</u>
ND	yes	yes	yes	yes	yes	yes	ND	yes	yes	ND	yes

6.01.01 knowledge of storage tank materials and sizes

6.01.02 knowledge of removal and installation procedures

6.01.03 knowledge of impact of movement/vibration on tank and mounting hardware

6.01.04 knowledge of types, materials and requirements for mounting hardware

Supporting Knowledge & Abilities

- 6.01.05 ability to locate and position tank
- 6.01.06 ability to install fittings, drains and vents
- 6.01.07 ability to secure tanks
- 6.01.08 ability to calculate capacity of storage tank

Sub-task

6.02 Repairs storage tanks and components.

Supporting Knowledge & Abilities

<u>NF</u>	<u>NS</u>	<u>PE</u>	<u>NB</u>	<u>QC</u>	<u>ON</u>	<u>MB</u>	<u>SK</u>	<u>AB</u>	<u>BC</u>	<u>NT</u>	<u>YK</u>
ND	yes	yes	yes	yes	yes	yes	ND	yes	yes	ND	yes

- 6.02.01 knowledge of storage tank materials
- 6.02.02 knowledge of tank repair procedures such as plastic welding techniques and gluing methods
- 6.02.03 knowledge of water fresheners and sterilizers
- 6.02.04 ability to install fittings
- 6.02.05 ability to plastic weld patches and cracks
- 6.02.06 ability to spin weld plastic fittings
- 6.02.07 ability to clean, abrade, sand tank surfaces
- 6.02.08 ability to fill tanks
- 6.02.09 ability to test tank for leaks

Sub-task

6.03 Repairs distribution system.

Supporting Knowledge & Abilities

<u>NF</u>	<u>NS</u>	<u>PE</u>	<u>NB</u>	<u>QC</u>	<u>ON</u>	<u>MB</u>	<u>SK</u>	<u>AB</u>	<u>BC</u>	<u>NT</u>	<u>YK</u>
ND	yes	yes	yes	yes	yes	yes	ND	yes	yes	ND	yes

Supporting Knowledge & Abilities

- 6.03.01 knowledge of tubing and piping materials
- 6.03.02 knowledge of tubing and piping sizes
- 6.03.03 knowledge of thread sizes and types
- 6.03.04 knowledge of types of fittings such as compression, 90° and Tee fittings
- 6.03.05 knowledge of DC electricity operation
- 6.03.06 knowledge of pump operation
- 6.03.07 knowledge of accumulators
- 6.03.08 ability to work in tight spaces
- 6.03.09 ability to replace/splice water lines
- 6.03.10 ability to locate water leaks
- 6.03.11 ability to test water system
- 6.03.12 ability to clean up water leaks
- 6.03.13 ability to repair water pump
- 6.03.14 ability to flare tubing
- 6.03.15 ability to bench test pump

Sub-task

6.04 Replaces distribution parts.

Supporting Knowledge & Abilities

<u>NF</u>	<u>NS</u>	<u>PE</u>	<u>NB</u>	<u>QC</u>	<u>ON</u>	<u>MB</u>	<u>SK</u>	<u>AB</u>	<u>BC</u>	<u>NT</u>	<u>YK</u>
ND	yes	yes	yes	yes	yes	yes	ND	yes	yes	ND	yes

- 6.04.01 knowledge of location of parts such as filters, check-valves, lines
- 6.04.02 knowledge of methods to remove pressure before starting repairs

Supporting Knowledge & Abilities

- 6.04.03 knowledge of procedures to remove and replace plumbing parts
- 6.04.04 ability to replace pump and pump parts
- 6.04.05 ability to replace filters
- 6.04.06 ability to replace accumulator tank
- 6.04.07 ability to replace valves

Sub-task

6.05 Repairs plumbing fixtures.

Supporting Knowledge & Abilities

<u>NF</u>	<u>NS</u>	<u>PE</u>	<u>NB</u>	<u>QC</u>	<u>ON</u>	<u>MB</u>	<u>SK</u>	<u>AB</u>	<u>BC</u>	<u>NT</u>	<u>YK</u>
ND	yes	yes	yes	yes	yes	yes	ND	yes	yes	ND	yes

- 6.05.01 knowledge of types and operation of toilets, faucets, showers, shower stalls
- 6.05.02 knowledge of types of valves, seals, and hoses
- 6.05.03 knowledge of methods for fibreglassing
- 6.05.04 ability to remove toilets, faucets, sinks, shower stalls and tubs
- 6.05.05 ability to replace closet seals
- 6.05.06 ability to replace ball valves, float assemblies, vacuum breaker, pedal mechanism, slide valves, seats and lids, gaskets, faucet stems, O-rings, cables, P-traps, PO plugs
- 6.05.07 ability to work with fibreglass

Sub-task

6.06 Replaces plumbing fixtures.

Supporting Knowledge & Abilities

<u>NF</u>	<u>NS</u>	<u>PE</u>	<u>NB</u>	<u>QC</u>	<u>ON</u>	<u>MB</u>	<u>SK</u>	<u>AB</u>	<u>BC</u>	<u>NT</u>	<u>YK</u>
ND	yes	yes	yes	yes	yes	yes	ND	yes	yes	ND	yes

Supporting Knowledge & Abilities

- 6.06.01 knowledge of installation and removal procedures for fixtures
- 6.06.02 ability to remove fixtures
- 6.06.03 ability to bench test toilets
- 6.06.04 ability to install fixtures
- 6.06.05 ability to hook up potable water to fixtures

Sub-task

6.07 Winterizes potable systems.

Supporting Knowledge & Abilities

<u>NF</u>	<u>NS</u>	<u>PE</u>	<u>NB</u>	<u>QC</u>	<u>ON</u>	<u>MB</u>	<u>SK</u>	<u>AB</u>	<u>BC</u>	<u>NT</u>	<u>YK</u>
ND	yes	yes	yes	yes	yes	yes	ND	yes	yes	ND	yes
							6.07.01				knowledge of types of potable anti-freeze liquids
							6.07.02				knowledge of location of drain valves
							6.07.03				knowledge of location of by-pass valves
							6.07.04				knowledge of types of by-pass systems
							6.07.05				ability to check valve operation
							6.07.06				ability to pump anti-freeze into water system
							6.07.07				ability to install water heater by-pass
							6.07.08				ability to install pump conversion kit
							6.07.09				ability to use blow-out plug
							6.07.10				ability to flush system
							6.07.11				ability to remove/replace drinking water filters
							6.07.12				ability to winterize appliances such as clothes washer and dishwasher
							6.07.13				ability to drain ice-makers

Sub-task

6.08 Tests potable water systems. Supporting Knowledge & Abilities

<u>NF</u>	<u>NS</u>	<u>PE</u>	<u>NB</u>	<u>QC</u>	<u>ON</u>	<u>MB</u>	<u>SK</u>	<u>AB</u>	<u>BC</u>	<u>NT</u>	<u>YK</u>
ND	yes	yes	yes	yes	yes	yes	ND	yes	yes	ND	yes
					6.08.01						knowledge of operation of pumps, valves, fixtures
					6.08.02						knowledge of monitor panel operation
					6.08.03						knowledge of hand pump operation
					6.08.04						knowledge of flushing and sanitizing procedures
					6.08.05						ability to physically operate fixture
					6.08.06						ability to activate pump
					6.08.07						ability to operate hand pumps
					6.08.08						ability to dewinterize

Task 7 Maintains waste water systems.

Related Components: Black water tank, gray water tank, 1¼, 1½, 2, 3” ABS fittings, ABS pipes, ABS glue, gate valves, flow-way valve, sewer hoses, sewer hose adapters, traps, drains, termination caps, pop vent, drain cleaners, toilet chemicals, toilet paper, Vaseline, silicon spray, seals, closet flange, sealants, pipe dope, Teflon tape, tank mounts, plumbing straps, rubber couplers, hose clamps, hangers, screws, bolts, nuts, washers, back flush adapter.

Tools and Equipment: Snakes, glue equipment, saws, measuring tape, sandpaper, toilet wand, screw gun, wrenches, screwdrivers, pliers, channel lock pliers.

Sub-task

7.01 Repairs waste holding tanks and components. Supporting Knowledge & Abilities

<u>NF</u>	<u>NS</u>	<u>PE</u>	<u>NB</u>	<u>QC</u>	<u>ON</u>	<u>MB</u>	<u>SK</u>	<u>AB</u>	<u>BC</u>	<u>NT</u>	<u>YK</u>
ND	yes	yes	yes	yes	yes	yes	ND	yes	yes	ND	yes

Supporting Knowledge & Abilities

- 7.01.01 knowledge of tank materials
- 7.01.02 knowledge of tank repairs and procedures
- 7.01.03 knowledge of types of toilet chemicals and treatments
- 7.01.04 knowledge of venting requirements
- 7.01.05 knowledge of location of tanks
- 7.01.06 ability to replace tanks
- 7.01.07 ability to splice ABS pipes
- 7.01.08 ability to replace gate valves, toilets, tank fittings such as torpedo and closet
- 7.01.09 ability to weld and glue patches and cracks
- 7.01.10 ability to drain tank
- 7.01.11 ability to clean tank
- 7.01.12 ability to measure and size tanks
- 7.01.13 ability to calculate tank capacity

Sub-task

7.02 Repairs collection system.

Supporting Knowledge & Abilities

<u>NF</u>	<u>NS</u>	<u>PE</u>	<u>NB</u>	<u>QC</u>	<u>ON</u>	<u>MB</u>	<u>SK</u>	<u>AB</u>	<u>BC</u>	<u>NT</u>	<u>YK</u>
ND	yes	yes	yes	yes	yes	yes	ND	yes	yes	ND	yes

- 7.02.01 knowledge of collection system location
- 7.02.02 knowledge of rubber couplers
- 7.02.03 knowledge of collection system operation
- 7.02.04 ability to remove and replace collection system
- 7.02.05 ability to replace p-traps

Supporting Knowledge & Abilities

- 7.02.06 ability to replace drains
- 7.02.07 ability to replace shower tub pan
- 7.02.08 ability to replace gaskets
- 7.02.09 ability to replace sink basins

Sub-task

7.03 Tests waste water systems.

Supporting Knowledge & Abilities

<u>NF</u>	<u>NS</u>	<u>PE</u>	<u>NB</u>	<u>QC</u>	<u>ON</u>	<u>MB</u>	<u>SK</u>	<u>AB</u>	<u>BC</u>	<u>NT</u>	<u>YK</u>
ND	yes	yes	yes	yes	yes	yes	ND	yes	yes	ND	yes

- 7.03.01 knowledge of waste water system location
- 7.03.02 knowledge of flood test procedures
- 7.03.03 knowledge of when to turn water off
- 7.03.04 knowledge of flow test procedures
- 7.03.05 knowledge of potential leakage areas
- 7.03.06 ability to identify leaks
- 7.03.07 ability to identify obstruction locations
- 7.03.08 ability to identify venting problems

BLOCK C

ELECTRICAL

Trends: Generator sets are getting larger and are more frequently found on board in response to larger load requirements. There is a trend to the increased use of inverters and the use of solar panels for battery recharge, and a larger number of batteries installed on RV's.

Task 8 Maintains AC electrical system.

Related Components: Wires, connectors, tape (electrical), fasteners (wrap, tie, screws, bolts etc), loom, receptacles, switches, circuit breakers (fuses), motor oil, filters, gas (diesel), solder, terminal cleaners (chemical spray), power supply cord, plugs, panel boxes.

Tools and Equipment: Crimp tools, strippers, DMM (circuit tester), basic hand tools (pliers, screwdrivers, wrenches), electric drills, bits, hack saw, knife, drain bucket and funnel, filter wrench, soldering iron (gun), wire brush.

Sub-task

8.01 Replaces AC power cords and connectors.

Supporting Knowledge & Abilities

<u>NF</u>	<u>NS</u>	<u>PE</u>	<u>NB</u>	<u>QC</u>	<u>ON</u>	<u>MB</u>	<u>SK</u>	<u>AB</u>	<u>BC</u>	<u>NT</u>	<u>YK</u>
ND	yes	yes	yes	yes	yes	yes	ND	yes	yes	ND	yes

- 8.01.01 knowledge of Ohm’s law
- 8.01.02 knowledge of removal and installation procedures
- 8.01.03 ability to attach wires
- 8.01.04 ability to solder connections

Sub-task

8.02 Repairs generator set.

Supporting Knowledge & Abilities

<u>NF</u>	<u>NS</u>	<u>PE</u>	<u>NB</u>	<u>QC</u>	<u>ON</u>	<u>MB</u>	<u>SK</u>	<u>AB</u>	<u>BC</u>	<u>NT</u>	<u>YK</u>
ND	yes	yes	no	yes	yes	yes	ND	yes	yes	ND	no

- 8.02.01 knowledge of small engine operation
- 8.02.02 knowledge of generator operating principles
- 8.02.03 knowledge of strategy based diagnostics
- 8.02.04 ability to repair carburetor and ignition
- 8.02.05 ability to repair starting system switches and harness

Supporting Knowledge & Abilities

- 8.02.06 ability to replace generator components, and brushes
- 8.02.07 ability to assess DMM readings
- 8.02.08 ability to repair transfer switches

Sub-task

8.03 Services generator set.

Supporting Knowledge & Abilities

<u>NF</u>	<u>NS</u>	<u>PE</u>	<u>NB</u>	<u>QC</u>	<u>ON</u>	<u>MB</u>	<u>SK</u>	<u>AB</u>	<u>BC</u>	<u>NT</u>	<u>YK</u>
ND	yes	yes	yes	yes	yes	yes	ND	yes	yes	ND	no
					8.03.01		knowledge of engine maintenance procedures				
					8.03.02		knowledge of generator maintenance procedures				
					8.03.03		knowledge of correct service intervals				
					8.03.04		knowledge of small engine operation				
					8.03.05		knowledge of generator operating principles				
					8.03.06		knowledge of strategy based diagnostics				
					8.03.07		knowledge of lubricants S.A.E. (Society of Automotive Engineers) viscosity ratings and A.P.I. (American Petroleum Institute) service levels				
					8.03.08		ability to replace starting system switches and harness				
					8.03.09		ability to replace generator components and brushes				
					8.03.10		ability to assess DMM readings				
					8.03.11		ability to replace transfer switches				
					8.03.12		ability to replace filters				
					8.03.13		ability to drain lubricants and refill				

Supporting Knowledge & Abilities

- 8.03.14 ability to replace spark plug(s) or ignition components
- 8.03.15 ability to adjust voltage output of generator set
- 8.03.16 ability to service exhaust components

Sub-task

8.04 Repairs AC distribution system.

Supporting Knowledge & Abilities

<u>NF</u>	<u>NS</u>	<u>PE</u>	<u>NB</u>	<u>QC</u>	<u>ON</u>	<u>MB</u>	<u>SK</u>	<u>AB</u>	<u>BC</u>	<u>NT</u>	<u>YK</u>
ND	yes	yes	yes	yes	yes	yes	ND	yes	yes	ND	no

- 8.04.01 knowledge of components on a distribution system such as service panel, switches, breakers, wires, connectors, receptacles
- 8.04.02 ability to position and secure panels
- 8.04.03 ability to install 2-way, 3-way switches
- 8.04.04 ability to attach wire breakers and receptacles

Sub-task

8.05 Tests AC electrical systems.

Supporting Knowledge & Abilities

<u>NF</u>	<u>NS</u>	<u>PE</u>	<u>NB</u>	<u>QC</u>	<u>ON</u>	<u>MB</u>	<u>SK</u>	<u>AB</u>	<u>BC</u>	<u>NT</u>	<u>YK</u>
ND	yes	yes	yes	yes	yes	yes	ND	yes	yes	ND	yes

- 8.05.01 knowledge of Ohm's law
- 8.05.02 knowledge of testing procedures for AC electrical systems
- 8.05.03 ability to test voltage to distribution panel
- 8.05.04 ability to test voltage output of Generator set
- 8.05.05 ability to test cycles on the Generator set

Supporting Knowledge & Abilities

- 8.05.06 ability to test voltage/amperage output to load
- 8.05.07 ability to evaluate test findings

Task 9 Maintains DC electrical systems.

Related Components: Batteries, converters, isolators, battery box (house), conductors, circuit protection (fuses, fuse link, circuit breaker), distribution panel, loads (lights 12 volts, 12 volt fans), water pump, wire, connectors, fasteners (wrap tie, screws, bolts, etc), loom, receptacles, switches, circuit protectors, solder, shrink tube, tape, monitor panels.

Tools and Equipment: Hydrometer – distilled water, wire strippers, crimp tools, DMM (VAT40), battery booster, alternator tester, battery charger (fast, trickle), test light, basic hand tools, electric drill, drill bits, screwdriver bits, knife, battery terminal cleaners, soldering iron (gun), heat gun, cord test tool, jumper leads, battery carrying strap.

Sub-task

9.01 Services batteries.

Supporting Knowledge & Abilities

<u>NF</u>	<u>NS</u>	<u>PE</u>	<u>NB</u>	<u>QC</u>	<u>ON</u>	<u>MB</u>	<u>SK</u>	<u>AB</u>	<u>BC</u>	<u>NT</u>	<u>YK</u>
ND	yes	yes	yes	yes	yes	yes	ND	yes	yes	ND	yes

- 9.01.01 knowledge of Ohm’s law
- 9.01.02 knowledge of battery construction and types
- 9.01.03 knowledge of testing procedures, (hydrometer, load testing)
- 9.01.04 knowledge of safety precautions
- 9.01.05 knowledge of recharging procedures
- 9.01.06 knowledge of installation procedures
- 9.01.07 ability to operate test equipment

Supporting Knowledge & Abilities

- 9.01.08 ability to operate recharging equipment
- 9.01.09 ability to clean terminals
- 9.01.10 ability to adjust fluid level(s)
- 9.01.11 ability to remove and install batteries

Sub-task

9.02 Repairs converters.

Supporting Knowledge & Abilities

NF NS PE NB QC
ND yes yes yes yes

ON MB SK AB BC NT YK
yes yes ND yes yes ND yes

- 9.02.01 knowledge of converter types and construction (repairable, non-repairable)
- 9.02.02 knowledge of output capacities
- 9.02.03 knowledge of repair procedures
- 9.02.04 knowledge of testing units and components
- 9.02.05 knowledge of installation precautions
- 9.02.06 ability to operate testing equipment
- 9.02.07 ability to replace defective components
- 9.02.08 ability to retest after repair (output voltage, amperage, recharge, volt lamp)
- 9.02.09 ability to replace units

Sub-task

9.03 Repairs DC distribution systems.

Supporting Knowledge & Abilities

NF NS PE NB QC
ND yes yes yes yes

ON MB SK AB BC NT YK
yes yes ND yes yes ND yes

Supporting Knowledge & Abilities

- 9.03.01 knowledge of Ohm's law
- 9.03.02 knowledge of service panels and components
- 9.03.03 knowledge of fuses, circuit breaker types, switches, conductors, relays, receptacles
- 9.03.04 knowledge of testing procedures for service panel
- 9.03.05 ability to operate testing equipment
- 9.03.06 ability to evaluate test results
- 9.03.07 ability to repair or replace components

Sub-task

9.04 Repairs monitoring systems.

Supporting Knowledge & Abilities

<u>NF</u>	<u>NS</u>	<u>PE</u>	<u>NB</u>	<u>QC</u>	<u>ON</u>	<u>MB</u>	<u>SK</u>	<u>AB</u>	<u>BC</u>	<u>NT</u>	<u>YK</u>
ND	yes	yes	yes	yes	yes	yes	ND	yes	yes	ND	yes

- 9.04.01 knowledge of monitor systems and sensors
- 9.04.02 knowledge of testing procedures
- 9.04.03 knowledge of available repair procedures
- 9.04.04 ability to operate testing equipment
- 9.04.05 ability to repair or replace components or system

Sub-task

9.05 Tests DC electrical systems. Supporting Knowledge & Abilities

<u>NF</u>	<u>NS</u>	<u>PE</u>	<u>NB</u>	<u>QC</u>	<u>ON</u>	<u>MB</u>	<u>SK</u>	<u>AB</u>	<u>BC</u>	<u>NT</u>	<u>YK</u>
ND	yes	yes	yes	yes	yes	yes	ND	yes	yes	ND	yes

Supporting Knowledge & Abilities

- 9.05.01 knowledge of Ohm's law (DC)
- 9.05.02 knowledge of testing procedures
- 9.05.03 knowledge of repair procedures and precautions
- 9.05.04 ability to evaluate test findings
- 9.05.05 ability to operate test equipment
- 9.05.06 ability to test voltage and amperage to load
- 9.05.07 ability to test supply voltage and amperage to distribution panel

Sub-task

9.06 Checks inverters and solar panels.

Supporting Knowledge & Abilities

<u>NF</u>	<u>NS</u>	<u>PE</u>	<u>NB</u>	<u>QC</u>	<u>ON</u>	<u>MB</u>	<u>SK</u>	<u>AB</u>	<u>BC</u>	<u>NT</u>	<u>YK</u>
ND	yes	yes	yes	yes	yes	yes	ND	yes	yes	ND	no

- 9.06.01 knowledge of models and manufacturers' specifications
- 9.06.02 knowledge of testing procedures
- 9.06.03 knowledge of repair procedures and precautions
- 9.06.04 knowledge of how sun angle and dirty surfaces affect solar panel operation
- 9.06.05 knowledge of heat resistance levels of solar panels
- 9.06.06 ability to evaluate test finding
- 9.06.07 ability to size a system to a customer's needs

BLOCK D

LP GAS

Trends: Towards new types of fill valves on bottle containers and use of quick connectors.

Task 10 Maintains high pressure LP gas system.

Related Components: Containers (ASME, bottle), hoses, fasteners, brackets, valves, paint, thread sealer, O-rings, gauge, manometer, T-fitting.

Tools and Equipment: Wrenches, screwdrivers, drill bits, drills, leak detector, hacksaw, welder, tape measure, square, wire brush, scale, flashlight, date stamp equipment, hammer.

Sub-task

10.01 Inspects high pressure LP system containers, piping and valves.

Supporting Knowledge & Abilities

NF
ND

NS
yes

PE
yes

NB
yes

QC
yes

ON
yes

MB
yes

SK
ND

AB
yes

BC
yes

NT
ND

YK
yes

10.01.01 knowledge of tank/container applications

10.01.02 knowledge of installation and removal procedures

10.01.03 knowledge of date codes

10.01.04 knowledge of characteristics of LP gas

10.01.05 ability to operate detector equipment

10.01.06 ability to evaluate condition, age of container

10.01.07 ability to determine whether valve is functional

Sub-task

10.02 Replaces high pressure LP gas system components.

Supporting Knowledge & Abilities

<u>NF</u>	<u>NS</u>	<u>PE</u>	<u>NB</u>	<u>QC</u>	<u>ON</u>	<u>MB</u>	<u>SK</u>	<u>AB</u>	<u>BC</u>	<u>NT</u>	<u>YK</u>
ND	yes	yes	yes	yes	yes	yes	ND	yes	yes	ND	yes

- 10.02.01 knowledge of system components such as tanks, valves and hoses
- 10.02.02 knowledge of installation and removal procedures
- 10.02.03 knowledge of valve types
- 10.02.04 ability to install valves
- 10.02.05 ability to install hoses
- 10.02.06 ability to secure tanks
- 10.02.07 ability to position tanks
- 10.02.08 ability to remove tanks

Sub-task

10.03 Services high pressure LP gas systems.

Supporting Knowledge & Abilities

<u>NF</u>	<u>NS</u>	<u>PE</u>	<u>NB</u>	<u>QC</u>	<u>ON</u>	<u>MB</u>	<u>SK</u>	<u>AB</u>	<u>BC</u>	<u>NT</u>	<u>YK</u>
ND	yes	yes	no	yes	yes	yes	ND	yes	yes	ND	yes

- 10.03.01 knowledge of paint types
- 10.03.02 knowledge of fill procedures for both container types
- 10.03.03 knowledge of purging procedures
- 10.03.04 ability to apply paint
- 10.03.05 ability to fill to required level
- 10.03.06 ability to determine tank types

Sub-task

10.04 Recertifies high pressure LP containers. Supporting Knowledge & Abilities

(NOT COMMON CORE)

<u>NF</u>	<u>NS</u>	<u>PE</u>	<u>NB</u>	<u>QC</u>	<u>ON</u>	<u>MB</u>	<u>SK</u>	<u>AB</u>	<u>BC</u>	<u>NT</u>	<u>YK</u>
ND	no	no	no	yes	yes	yes	ND	yes	yes	ND	yes

- 10.04.01 knowledge of types of valves
- 10.04.02 ability to install valves
- 10.04.03 ability to inspect LP container for damage, corrosion
- 10.04.04 ability to date stamp container

Task 11 Maintains low pressure LP gas systems.

Related Components: Regulator, tubing (rubber, aluminum, steel, copper), fittings, fasteners, pipe thread compounds, methyl hydrate.

Tools and Equipment: Flaring tools, drill and bits, saw, tube cutter, wrenches, pipe bender, holesaw, leak detector (liquid and electronic), manometer, screwdriver.

Sub-task

11.01 Replaces low pressure LP system components. Supporting Knowledge & Abilities

<u>NF</u>	<u>NS</u>	<u>PE</u>	<u>NB</u>	<u>QC</u>	<u>ON</u>	<u>MB</u>	<u>SK</u>	<u>AB</u>	<u>BC</u>	<u>NT</u>	<u>YK</u>
ND	yes	yes	yes	yes	yes	yes	ND	yes	yes	ND	yes

- 11.01.01 knowledge of pipe sizing
- 11.01.02 knowledge of pipe material
- 11.01.03 knowledge of routing
- 11.01.04 knowledge of regulator types and installation methods

Supporting Knowledge & Abilities

- 11.01.05 knowledge of testing procedures
- 11.01.06 ability to flare tubing
- 11.01.07 ability to fasten/secure the distribution system
- 11.01.08 ability to thread steel pipe
- 11.01.09 ability to design system
- 11.01.10 ability to conduct leak test
- 11.01.11 ability to adjust and regulate pressure

Sub-task

11.02 Services low pressure LP systems.

Supporting Knowledge & Abilities

NF NS PE NB QC
ND yes yes yes yes

ON MB SK AB BC NT YK
yes yes ND yes yes ND yes

- 11.02.01 knowledge of method to detect leaks
- 11.02.02 knowledge of regulators
- 11.02.03 knowledge of types of piping systems
- 11.02.04 knowledge of types of contaminants
- 11.02.05 ability to perform leak tests
- 11.02.06 ability to perform pressure tests
- 11.02.07 ability to remove contaminants
- 11.02.08 ability to replace protective coverings
- 11.02.09 ability to adjust and regulate pressure

BLOCK E
APPLIANCES

Trends: Towards the use of heat pumps, the use of direct spark ignition style ranges/ovens, indoor-outdoor stoves, and use of refrigerator fans.

Task 12 Maintains furnaces and associated systems.

Related Components: Heat exchanger, electrodes, motor, fan, thermostat, vents, ducts, relay, pilot assembly, thermocouple, orifice, burner, limit switch/high temperature switch, sail switch, gaskets, DSI board, piezo lighter, combustion air hose, gas valve, capillary tubes, gas control, electric gas control, circuit breaker, electrical connectors, wire, tubing, fasteners, thread sealant, putty tape, gas connectors, thermopile, duct tape, clamps, fan switch, electrical connectors, high voltage cable.

Tools and Equipment: Wrenches, screwdriver, manometer, multimeter, utility knife, pliers, leak detector, air flow meter, drill bits, hole saw, saw, wire cutter, crimping tool, wire stripper, flaring tools, tube bender, stapler, air compressor, brushes, thermometer, wet-dry vacuum, circuit board tester, tape measure, square.

Sub-task

12.01 Diagnoses furnace faults.

Supporting Knowledge & Abilities

<u>NF</u>	<u>NS</u>	<u>PE</u>	<u>NB</u>	<u>QC</u>	<u>ON</u>	<u>MB</u>	<u>SK</u>	<u>AB</u>	<u>BC</u>	<u>NT</u>	<u>YK</u>
ND	yes	yes	yes	yes	yes	yes	ND	yes	yes	ND	yes

12.01.01 knowledge of sequence of operations

12.01.02 knowledge of system requirements

12.01.03 knowledge of DC systems

12.01.04 knowledge of LP gas systems

12.01.05 knowledge of power testing equipment

12.01.06 knowledge of types of furnaces such as gravity-fed, forced air (direct spark ignition and pilot)

12.01.07 knowledge of AC systems

Supporting Knowledge & Abilities

- 12.01.08 ability to locate components off schematics
- 12.01.09 ability to check power and gas supply
- 12.01.10 ability to detect damaged/defective parts
- 12.01.11 ability to diagnose flame characteristics
- 12.01.12 ability to recognize signs of poor installation
- 12.01.13 ability to recognize signs of blocked venting and ducting
- 12.01.14 ability to isolate faulty component(s)
- 12.01.15 ability to calibrate LP gas system

Sub-task

12.02 Replaces furnace components and ducting.

Supporting Knowledge & Abilities

NF NS PE NB QC
ND yes yes yes yes

ON MB SK AB BC NT YK
yes yes ND yes yes ND yes

- 12.02.01 knowledge of system requirements and components
- 12.02.02 knowledge of DC systems
- 12.02.03 knowledge of liquid propane gas systems
- 12.02.04 knowledge of power testing equipment
- 12.02.05 knowledge of installation and removal procedures for components
- 12.02.06 ability to locate components in furnace
- 12.02.07 ability to shut off gas and power supplies
- 12.02.08 ability to conduct gas leak tests
- 12.02.09 ability to calibrate thermostat and anticipator

Supporting Knowledge & Abilities

12.02.10 ability to install electrical connection

12.02.11 ability to splice/install ducting

Sub-task

12.03 Replaces furnaces.

Supporting Knowledge & Abilities

<u>NF</u>	<u>NS</u>	<u>PE</u>	<u>NB</u>	<u>QC</u>	<u>ON</u>	<u>MB</u>	<u>SK</u>	<u>AB</u>	<u>BC</u>	<u>NT</u>	<u>YK</u>
ND	yes	yes	yes	yes	yes	yes	ND	yes	yes	ND	yes

12.03.01 knowledge of system requirements such as venting, piping, ducting

12.03.02 knowledge of AC, DC circuits and LP gas systems

12.03.03 knowledge of installation and removal procedures

12.03.04 knowledge of thermostat location

12.03.05 ability to shut off gas and power

12.03.06 ability to modify openings

12.03.07 ability to determine location for furnace

12.03.08 ability to conduct leak tests

12.03.09 ability to add/modify ducting and venting

12.03.10 ability to modify/install AC/DC circuit

12.03.11 ability to modify/install gas supply

12.03.12 ability to calibrate LP gas system

Sub-task

12.04 Services furnaces, components, ducting and return air.

Supporting Knowledge & Abilities

<u>NF</u>	<u>NS</u>	<u>PE</u>	<u>NB</u>	<u>QC</u>	<u>ON</u>	<u>MB</u>	<u>SK</u>	<u>AB</u>	<u>BC</u>	<u>NT</u>	<u>YK</u>
ND	yes	yes	yes	yes	yes	yes	ND	yes	yes	ND	yes
					12.04.01		knowledge of system requirements				
					12.04.02		knowledge of sequence of operations				
					12.04.03		knowledge of AC and DC circuits and LP gas systems				
					12.04.04		knowledge of component operation				
					12.04.05		knowledge of removal and installation procedures				
					12.04.06		knowledge of routing and improving duct systems				
					12.04.07		ability to identify service requirements				
					12.04.08		ability to shut off gas and AC/DC				
					12.04.09		ability to calibrate LP gas system and thermostat				
					12.04.10		ability to clean orifice				
					12.04.11		ability to clean blower wheel				
					12.04.12		ability to perform leak test				
					12.04.13		ability to clean ducting				
					12.04.14		ability to test electrical components				

Task 13 Maintains water heaters.

Related Components: Thermocouple, electrode, burner, element, pilot assembly, switches, pressure relief valves, anodes, orifice, drain plug, DSI board, bypass valves, high temperature thermal switch, gas thermostat, manual gas control valve, tank, electric valve, electric thermostat, insulation jacket, exterior assembly (housing/door), putty tape, pipe dope, Teflon tape, electrical connectors, high voltage cable.

Tools and Equipment: Wrenches, screwdriver, manometer, multimeter, utility knife, pliers, leak detector, drill bits, hole saw, saw, wire cutter, crimping tool, wire stripper, flaring tools, tube bender, stapler, air compressor, brushes, thermometer, wet/dry vacuum cleaner, circuit board tester, tape measure, square.

Sub-task

13.01 Diagnoses water heater faults.

Supporting Knowledge & Abilities

<u>NF</u>	<u>NS</u>	<u>PE</u>	<u>NB</u>	<u>QC</u>	<u>ON</u>	<u>MB</u>	<u>SK</u>	<u>AB</u>	<u>BC</u>	<u>NT</u>	<u>YK</u>
ND	yes	yes	yes	yes	yes	yes	ND	yes	yes	ND	yes
					13.01.01		knowledge of sequence of operations				
					13.01.02		knowledge of system requirements				
					13.01.03		knowledge of AC and DC systems				
					13.01.04		knowledge of LP gas systems				
					13.01.05		knowledge of power testing equipment				
					13.01.06		knowledge of types of water heaters such as direct spark ignition, pilot, electric, and motor aid				
					13.01.07		ability to locate components off schematics				
					13.01.08		ability to check power and gas supply				
					13.01.09		ability to detect damaged/defective parts				
					13.01.10		ability to recognize signs of poor combustion				
					13.01.11		ability to recognize signs of poor installation				

Supporting Knowledge & Abilities

13.01.12 ability to calibrate LP gas system

13.01.13 ability to isolate faulty component(s)

Sub-task

13.02 Replaces water heater components.

Supporting Knowledge & Abilities

<u>NF</u>	<u>NS</u>	<u>PE</u>	<u>NB</u>	<u>QC</u>	<u>ON</u>	<u>MB</u>	<u>SK</u>	<u>AB</u>	<u>BC</u>	<u>NT</u>	<u>YK</u>
ND	yes	yes	yes	yes	yes	yes	ND	yes	yes	ND	yes

13.02.01 knowledge of system requirements and components

13.02.02 knowledge of AC and DC systems

13.02.03 knowledge of LP gas systems

13.02.04 knowledge of power testing equipment

13.02.05 knowledge of installation and removal procedures

13.02.06 ability to identify components

13.02.07 ability to locate components in water heater

13.02.08 ability to shut off gas and power supplies

13.02.09 ability to conduct gas leak tests

13.02.10 ability to correctly install electrical connections

13.02.11 ability to calibrate LP gas system

13.02.12 ability to adjust air adjustment

Sub-task

13.03 Replaces water heater.

Supporting Knowledge & Abilities

<u>NF</u>	<u>NS</u>	<u>PE</u>	<u>NB</u>	<u>QC</u>	<u>ON</u>	<u>MB</u>	<u>SK</u>	<u>AB</u>	<u>BC</u>	<u>NT</u>	<u>YK</u>	
ND	yes	yes	yes	yes	yes	yes	ND	yes	yes	ND	yes	
					13.03.01							knowledge of system requirements such as piping, size
					13.03.02							knowledge of AC, DC, motor aid and LP gas systems
					13.03.03							knowledge of power testing equipment
					13.03.04							knowledge of installation and removal procedures
					13.03.05							ability to shut off gas and power
					13.03.06							ability to modify openings
					13.03.07							ability to determine location
					13.03.08							ability to conduct leak tests
					13.03.09							ability to modify/install AC/DC circuit
					13.03.10							ability to modify/install gas supply
					13.03.11							ability to perform leak test for gas and water

Sub-task

13.04 Services water heater and components.

Supporting Knowledge & Abilities

<u>NF</u>	<u>NS</u>	<u>PE</u>	<u>NB</u>	<u>QC</u>	<u>ON</u>	<u>MB</u>	<u>SK</u>	<u>AB</u>	<u>BC</u>	<u>NT</u>	<u>YK</u>	
ND	yes	yes	yes	yes	yes	yes	ND	yes	yes	ND	yes	
					13.04.01							knowledge of system requirements
					13.04.02							knowledge of sequence of operations
					13.04.03							knowledge of AC, DC, motor aid and LP gas systems

Supporting Knowledge & Abilities

13.04.04	knowledge of component operation
13.04.05	knowledge of removal and installation procedures
13.04.06	ability to identify service requirements
13.04.07	ability to shut off AC, DC gas system
13.04.08	ability to calibrate LP gas system
13.04.09	ability to adjust combustion air
13.04.10	ability to clean combustion components
13.04.11	ability to clean orifice
13.04.12	ability to clean electrical connections
13.04.13	ability to perform leak tests for gas and water
13.04.14	ability to de-scale tank and replace anode rod
13.04.15	ability to drain tank
13.04.16	ability to test thermocouple

Task 14 Maintains ranges and ovens.

Related Components: Gas controls, regulator, burners, grates/racks, pilot assembly, piezo lighter, electrodes, vents, fasteners, oven doors, hinges, springs, seals, thermocouples, thermostat, orifices, clocks, lights, wire, manifold, piping, thread sealant, gaskets, quick connectors, rubber hoses, high voltage cable.

Tools and Equipment: Wrenches, screwdriver, manometer, multimeter, utility knife, pliers, leak detector, drill bits, hole saw, saw, wire cutter, crimping tool, wire stripper, flaring tools, tube bender, stapler, air compressor, brushes, oven temperature tester, wet/dry vacuum, circuit board tester, tape measure, square.

Sub-task**14.01 Diagnoses ranges/ovens faults.****Supporting Knowledge & Abilities**

<u>NF</u>	<u>NS</u>	<u>PE</u>	<u>NB</u>	<u>QC</u>	<u>ON</u>	<u>MB</u>	<u>SK</u>	<u>AB</u>	<u>BC</u>	<u>NT</u>	<u>YK</u>
ND	yes	yes	yes	yes	yes	yes	ND	yes	yes	ND	yes
					14.01.01						knowledge of sequence of operations
					14.01.02						knowledge of system requirements
					14.01.03						knowledge of AC and DC systems and LP gas systems
					14.01.04						knowledge of power testing equipment
					14.01.05						knowledge of types of ranges and ovens such as non-pilot, piezo, portable
					14.01.06						ability to check power and gas supply
					14.01.07						ability to detect damaged/defective parts
					14.01.08						ability to recognize signs of poor combustion
					14.01.09						ability to recognize signs of poor installation
					14.01.10						ability to recognize blocked venting
					14.01.11						ability to isolate faulty component(s)
					14.01.12						ability to calibrate LP gas system

Sub-task**14.02 Replaces ranges/ovens and components.****Supporting Knowledge & Abilities**

<u>NF</u>	<u>NS</u>	<u>PE</u>	<u>NB</u>	<u>QC</u>	<u>ON</u>	<u>MB</u>	<u>SK</u>	<u>AB</u>	<u>BC</u>	<u>NT</u>	<u>YK</u>
ND	yes	yes	yes	yes	yes	yes	ND	yes	yes	ND	yes
					14.02.01						knowledge of system requirements
					14.02.02						knowledge of AC, DC and LP gas systems

Supporting Knowledge & Abilities

14.02.03	knowledge of power testing equipment
14.02.04	knowledge of installation and removal procedures
14.02.05	ability to locate oven safety valve
14.02.06	ability to shut off gas and power supplies
14.02.07	ability to conduct gas leak test
14.02.08	ability to calibrate oven thermostat
14.02.09	ability to install electrical connections
14.02.10	ability to calibrate LP gas system
14.02.11	ability to adjust combustion air
14.02.12	ability to install/modify AC, DC, gas system
14.02.13	ability to add/modify opening
14.02.14	ability to replace gaskets and seals

Sub-task

14.03 Services ranges/ovens and components.

Supporting Knowledge & Abilities

<u>NF</u>	<u>NS</u>	<u>PE</u>	<u>NB</u>	<u>QC</u>	<u>ON</u>	<u>MB</u>	<u>SK</u>	<u>AB</u>	<u>BC</u>	<u>NT</u>	<u>YK</u>
ND	yes	yes	yes	yes	yes	yes	ND	yes	yes	ND	yes
					14.03.01		knowledge of system requirements				
					14.03.02		knowledge of sequence of operations				
					14.03.03		knowledge of AC, DC and LP gas systems				
					14.03.04		knowledge of component operation				
					14.03.05		knowledge of removal and installation procedures				
					14.03.06		ability to identify service requirements				
					14.03.07		ability to shut off gas, AC and DC				

Supporting Knowledge & Abilities

- 14.03.08 ability to calibrate LP system/thermostat
- 14.03.09 ability to clean combustion components
- 14.03.10 ability to clean orifice
- 14.03.11 ability to perform leak test
- 14.03.12 ability to calibrate oven thermostat
- 14.03.13 ability to adjust combustion air
- 14.03.14 ability to adjust oven door

Task 15 Maintains refrigeration systems.

Related Components:

Heat exchanger, electrodes, compressor, relay, thermostat (electric, gas), AC heating element, DC heating element, cooling unit, heat box, burner, orifice, thermocouple, tubing, piezo lighter, DSI board, power control, gas thermostat, electric switch, gas valve, eyebrow board, high voltage cable, wire, electronic connector, fuse, light switch, light, doors, gaskets, handles, hinges, baffles, shelving, thermistor, mullion heater, gas filter, bypass screw, flue cap, ducting, venting, wire harness, solenoid valve, drain tube, catch basin, thread sealer, thermomastic, foam tape, sealant, fasteners, foil tape, roof vent and cap, side vent, travel latch, masking tape.

Tools and Equipment:

Wrenches, screwdriver, manometer, multimeter, utility knife, pliers, leak detector, drill bits, hole saw, saw, wire cutter, crimping tool, wire stripper, flaring tools, tube bender, stapler, air compressor, brushes, thermometer, pry bar, caulking gun, wet/dry vacuum, flue cleaner, circuit board tester, tape measure, square.

Sub-task

15.01 Diagnoses refrigeration faults.

Supporting Knowledge & Abilities

<u>NF</u>	<u>NS</u>	<u>PE</u>	<u>NB</u>	<u>QC</u>	<u>ON</u>	<u>MB</u>	<u>SK</u>	<u>AB</u>	<u>BC</u>	<u>NT</u>	<u>YK</u>
ND	yes	yes	yes	yes	yes	yes	ND	yes	yes	ND	yes

Supporting Knowledge & Abilities

15.01.01	knowledge of sequence of operations
15.01.02	knowledge of system requirements
15.01.03	knowledge of AC, DC and liquid propane gas systems
15.01.04	knowledge of power testing equipment
15.01.05	knowledge of types of refrigerators such as compressor and absorption
15.01.06	knowledge of types of absorption refrigerators such as (AES) automatic energy selector, DSI, piezo
15.01.07	ability to locate components off schematics
15.01.08	ability to check power and gas supply
15.01.09	ability to detect damaged/defective parts
15.01.10	ability to recognize signs of poor combustion
15.01.11	ability to recognize signs of poor installation
15.01.12	ability to recognize signs of inadequate venting
15.01.13	ability to isolate faulty component(s)
15.01.14	ability to calibrate LP gas system
15.01.15	ability to bypass controls
15.01.16	ability to check circuit board
15.01.17	ability to test thermostat

Sub-task

15.02 Replaces refrigerator components.

Supporting Knowledge & Abilities

<u>NF</u>	<u>NS</u>	<u>PE</u>	<u>NB</u>	<u>QC</u>	<u>ON</u>	<u>MB</u>	<u>SK</u>	<u>AB</u>	<u>BC</u>	<u>NT</u>	<u>YK</u>
ND	yes	yes	yes	yes	yes	yes	ND	yes	yes	ND	yes

Supporting Knowledge & Abilities

15.02.01	knowledge of system requirements
15.02.02	knowledge of AC, DC and LP gas systems
15.02.03	knowledge of power testing equipment
15.02.04	knowledge of installation and removal procedures
15.02.05	ability to locate components in refrigerator
15.02.06	ability to shut off gas and power supplies
15.02.07	ability to conduct gas leak tests
15.02.08	ability to install electrical connections
15.02.09	ability to calibrate LP gas system
15.02.10	ability to modify venting
15.02.11	ability to test components prior to installation

Sub-task

15.03 Replaces refrigerators.

Supporting Knowledge & Abilities

<u>NF</u>	<u>NS</u>	<u>PE</u>	<u>NB</u>	<u>QC</u>
ND	yes	yes	yes	yes

<u>ON</u>	<u>MB</u>	<u>SK</u>	<u>AB</u>	<u>BC</u>	<u>NT</u>	<u>YK</u>
yes	yes	ND	yes	yes	ND	yes

15.03.01	knowledge of system requirements for venting, piping and sizing
15.03.02	knowledge of AC, DC and liquid propane gas systems
15.03.03	knowledge of installation and removal procedures
15.03.04	ability to shut off gas and power
15.03.05	ability to modify openings
15.03.06	ability to conduct leak tests
15.03.07	ability to add/modify ducting and venting
15.03.08	ability to modify/install AC/DC circuit

Supporting Knowledge & Abilities

15.03.09 ability to modify/install gas supply

15.03.10 ability to calibrate LP gas system

Sub-task

15.04 Services refrigerators, components and venting.

Supporting Knowledge & Abilities

<u>NF</u>	<u>NS</u>	<u>PE</u>	<u>NB</u>	<u>QC</u>	<u>ON</u>	<u>MB</u>	<u>SK</u>	<u>AB</u>	<u>BC</u>	<u>NT</u>	<u>YK</u>
ND	yes	yes	yes	yes	yes	yes	ND	yes	yes	ND	yes

15.04.01 knowledge of system requirements

15.04.02 knowledge of sequence of operations

15.04.03 knowledge of AC, DC and LP gas systems

15.04.04 knowledge of component operation

15.04.05 knowledge of removal and installation procedures

15.04.06 knowledge of routing and improving vent systems

15.04.07 ability to identify service requirements

15.04.08 ability to shut off gas and AC/DC

15.04.09 ability to calibrate LP gas system and thermostat

15.04.10 ability to clean orifice

15.04.11 ability to clean combustion components

15.04.12 ability to clean exterior coils

15.04.13 ability to clean vents

15.04.14 ability to clean flue and baffle

15.04.15 ability to perform leak test

Task 16 Maintains air conditioning and heat pump systems.

Related Components: Selector switch, thermostat, control board, main board, relay board, start relay, start capacitor, run capacitor, motor, overload protector, compressor, heat strip assembly, cold control, changeover thermostat, ambient sensor, relay DTSP, reversing valve, relay fan, wire harness, connectors, shrouds, ceiling assembly, equalizing valve, gaskets, seals, ducting, filter.

Tools and Equipment: Wrenches, screwdriver, multimeter, utility knife, pliers, air flow meter, drill bits, hole saw, saw, wire cutter, crimping tool, wire skimmer, stapler, air compressor, brushes, thermometer, wet/dry vacuum, circuit board tester, tape measure, square, ladder.

Sub-task

16.01 Diagnoses air conditioning and heat pump faults.

Supporting Knowledge & Abilities

<u>NF</u>	<u>NS</u>	<u>PE</u>	<u>NB</u>	<u>QC</u>	<u>ON</u>	<u>MB</u>	<u>SK</u>	<u>AB</u>	<u>BC</u>	<u>NT</u>	<u>YK</u>
ND	yes	yes	yes	yes	yes	yes	ND	yes	yes	ND	yes
					16.01.01		knowledge of sequence of operations				
					16.01.02		knowledge of system requirements				
					16.01.03		knowledge of AC and DC systems				
					16.01.04		knowledge of power testing equipment				
					16.01.05		knowledge of types of air conditioning systems such as basement, wall, roof				
					16.01.06		knowledge of electronic climate control systems				
					16.01.07		ability to locate components off schematics				
					16.01.08		ability to check power supply				
					16.01.09		ability to detect damaged/defective parts				
					16.01.10		ability to recognize signs of poor installation				
					16.01.11		ability to recognize signs of blocked venting and ducting				
					16.01.12		ability to isolate faulty component(s)				

Sub-task

16.02 Replaces air conditioning and heat pump electro-mechanical components.

Supporting Knowledge & Abilities

NF
ND

NS
yes

PE
yes

NB
yes

QC
yes

ON
yes

MB
yes

SK
ND

AB
yes

BC
yes

NT
ND

YK
yes

- 16.02.01 knowledge of system requirements and components
- 16.02.02 knowledge of AC and DC systems
- 16.02.03 knowledge of power testing equipment
- 16.02.04 knowledge of installation and removal procedures for components
- 16.02.05 ability to locate components in air conditioning system and heat pumps
- 16.02.06 ability to install electrical connections
- 16.02.07 ability to shut off power supply
- 16.02.08 ability to discharge capacitors

Sub-task

16.03 Replaces air conditioning and heat pump systems.

Supporting Knowledge & Abilities

NF
ND

NS
yes

PE
yes

NB
yes

QC
yes

ON
yes

MB
yes

SK
ND

AB
yes

BC
yes

NT
ND

YK
yes

- 16.03.01 knowledge of system requirements and components such as venting, wiring, sizing
- 16.03.02 knowledge of AC and DC systems
- 16.03.03 knowledge of power testing equipment
- 16.03.04 knowledge of installation and removal procedures for components
- 16.03.05 ability to shut off power supply

Supporting Knowledge & Abilities

- 16.03.06 ability to modify openings
- 16.03.07 ability to add/modify ducting and venting
- 16.03.08 ability to modify/install AC/DC circuit

Sub-task

16.04 Services air conditioner and heat pump systems and ducting.

Supporting Knowledge & Abilities

<u>NF</u>	<u>NS</u>	<u>PE</u>	<u>NB</u>	<u>QC</u>	<u>ON</u>	<u>MB</u>	<u>SK</u>	<u>AB</u>	<u>BC</u>	<u>NT</u>	<u>YK</u>
ND	yes	yes	yes	yes	yes	yes	ND	yes	yes	ND	yes

- 16.04.01 knowledge of system requirements
- 16.04.02 knowledge of sequence of operations
- 16.04.03 knowledge of AC and DC systems
- 16.04.04 knowledge of component operation
- 16.04.05 knowledge of removal and installation procedures
- 16.04.06 knowledge of ways to improve duct systems
- 16.04.07 knowledge of service requirements
- 16.04.08 ability to shut off AC and DC supply
- 16.04.09 ability to discharge capacitor
- 16.04.10 ability to clean exchanger and components
- 16.04.11 ability to clean filters
- 16.04.12 ability to comb condenser fins
- 16.04.13 ability to clean fan blades
- 16.04.14 ability to replace gaskets

BLOCK F

INTERIOR COMPONENTS AND EXTERIOR SHELL

Trends: General trend is towards increased cabinetry, built-in furniture and electronics. More detail, quality of finish is enhanced. Lighter finishes and upholstery. Greater utility space for storage. Greater use of slide outs. Extension speaker systems and external showers. Portable ranges. Greater use of rapid side wall construction using Styrofoam and fibreglass panels. Screened in add-a-rooms. Radius windows. Rounded roofs.

Task 17 Maintains interior components.

Related Components: Paneling, moldings, sofa, furniture and related cabinets, such as TV stands, night stands, flooring, (carpet, hardwood, linoleum, ceramic tile) cabinets, plywood, laminate, hardware (hinges, catches, screws, nails, staples), interior software (fabric goods, valance, blinds), grout, adhesives, contact cement, floor adhesive, stain, closet hardware, magazine/spice racks, stovetop covers, sink covers, smooth edge, wood fillers, putty sticks, gas lift props, inspection checklist.

Tools and Equipment: Staple gun, screwdrivers, drills, bits, drivers, hammer, saws (jig saw, holesaw, sawsall, table saw, mitre saw), pliers, common hand tools, flooring adhesive spreader (trowel), caulking gun, socket set, square, level, sander, grinder, sand paper, paint brushes, cleaning material (rags, etc.), tape measure, pop riveter, wire strippers, wood clamps, router and bits, wire cutters, crimpers, carpet stretcher, tile cutter, screening tool, utility knife, tin snips.

Sub-task

17.01 Inspects interior components.

Supporting Knowledge & Abilities

<u>NF</u>	<u>NS</u>	<u>PE</u>	<u>NB</u>	<u>QC</u>	<u>ON</u>	<u>MB</u>	<u>SK</u>	<u>AB</u>	<u>BC</u>	<u>NT</u>	<u>YK</u>
ND	yes	yes	yes	yes	yes	yes	ND	yes	yes	ND	yes

17.01.01 knowledge of RV construction

17.01.02 knowledge of interior component materials

17.01.03 knowledge of potential defects to material

Supporting Knowledge & Abilities

- 17.01.04 knowledge of inspection procedures and sequence
- 17.01.05 ability to identify defects in sidewalls, and ceilings, such as scratches, dents, holes, cuts, missing hardware, stains, bindings and buckling, missing panels
- 17.01.06 ability to identify defects in flooring and floor coverings, such as scratches, cuts, buckling in flooring, gouges, tears in carpeting, fading, stains, soft spots in flooring, improper seaming of flooring moldings, stretch of carpets
- 17.01.07 ability to identify defects in soft goods, such as tears, defective material, stains, fitting problems, deformation in foam upholstery fit, damaged springs, defective gas shocks, improper sizes for components
- 17.01.08 ability to identify defects in cabinetry such as missing/defective hardware, door slides and glides not installed properly, shelving improperly installed, scratches, dents, gouges, broken glass, molding shrinkage, improper cut outs, improper securing of cabinets to wall
- 17.01.09 ability to complete inspection checklist

Sub-task

17.02 Replaces sidewalls and ceiling surfaces.

Supporting Knowledge & Abilities

<u>NF</u>	<u>NS</u>	<u>PE</u>	<u>NB</u>	<u>QC</u>	<u>ON</u>	<u>MB</u>	<u>SK</u>	<u>AB</u>	<u>BC</u>	<u>NT</u>	<u>YK</u>
ND	yes	yes	yes	yes	yes	yes	ND	yes	yes	ND	yes

- 17.02.01 knowledge of procedures for removing and installing panels
- 17.02.02 knowledge of procedures for replacing molding and trim such as windows, cabinetry, wall plugs, covers, lamp fixtures, roof vent, garnishes, A/C ceiling assembly

Supporting Knowledge & Abilities

- 17.02.03 knowledge of removing and installing baths, tables, shower stalls
- 17.02.04 knowledge of removing and installing table and dinettes, hutches, chesterfields
- 17.02.05 knowledge of procedures for removing and installing appliances such as water heaters, refrigerators
- 17.02.06 knowledge of materials of sidewalls and ceiling surfaces
- 17.02.07 knowledge of insulation materials
- 17.02.08 knowledge of routing of electrical circuits
- 17.02.09 knowledge of manufacturing differences in construction
- 17.02.10 ability to measure, layout and cut ceiling and sidewall panel
- 17.02.11 ability to replace trim and molding
- 17.02.12 ability to fill and finish minor scratches
- 17.02.13 ability to stain/paint wooden surfaces
- 17.02.14 ability to replace ceiling fabrics

Sub-task

17.03 Replaces flooring and floor coverings.

Supporting Knowledge & Abilities

<u>NF</u>	<u>NS</u>	<u>PE</u>	<u>NB</u>	<u>QC</u>	<u>ON</u>	<u>MB</u>	<u>SK</u>	<u>AB</u>	<u>BC</u>	<u>NT</u>	<u>YK</u>
ND	yes	yes	yes	yes	yes	yes	ND	yes	yes	ND	yes

- 17.03.01 knowledge of floor covering and adhesive
- 17.03.02 knowledge of flooring and sub flooring construction

Supporting Knowledge & Abilities

- 17.03.03 knowledge of procedures to remove/install floor coverings and carpets
- 17.03.04 knowledge of procedures for removing built-ins, and cabinetry
- 17.03.05 ability to remove rubber moldings where floor meets cabinetry or sidewalls
- 17.03.06 ability to prepare the sub floor
- 17.03.07 ability to cut out flooring, sub flooring
- 17.03.08 ability to install flooring/sub flooring patches
- 17.03.09 ability to apply adhesives
- 17.03.10 ability to patch floor coverings
- 17.03.11 ability to replace carpets and floor coverings such as hardwood, linoleum, asphalt tile, ceramic tile
- 17.03.12 ability to install carpets and floor coverings
- 17.03.13 ability to install moldings and trim

Sub-task

17.04 Replaces soft goods.

Supporting Knowledge & Abilities

<u>NF</u>	<u>NS</u>	<u>PE</u>	<u>NB</u>	<u>QC</u>	<u>ON</u>	<u>MB</u>	<u>SK</u>	<u>AB</u>	<u>BC</u>	<u>NT</u>	<u>YK</u>
ND	yes	yes	yes	yes	yes	yes	ND	yes	yes	ND	no

- 17.04.01 knowledge of procedures to remove/install soft goods from walls and floor
- 17.04.02 knowledge of soft goods materials, upholstery, fabric, foams, leather, vinyl, screening, canvas
- 17.04.03 ability to repair rips and tears
- 17.04.04 ability to replace hardware, such as zippers, snaps, buttons

Supporting Knowledge & Abilities

17.04.05	ability to patch soft goods material
17.04.06	ability to replace blinds, curtains, drapes, valances
17.04.07	ability to replace foam
17.04.08	ability to replace fabrics
17.04.09	ability to re-secure soft good materials, leather, fabric, vinyl

Sub-task

17.05 Repairs cabinetry.

Supporting Knowledge & Abilities

<u>NF</u>	<u>NS</u>	<u>PE</u>	<u>NB</u>	<u>QC</u>	<u>ON</u>	<u>MB</u>	<u>SK</u>	<u>AB</u>	<u>BC</u>	<u>NT</u>	<u>YK</u>
ND	yes	yes	yes	yes	yes	yes	ND	yes	yes	ND	yes
					17.05.01		knowledge of cabinetry defects				
					17.05.02		knowledge of cabinetry construction				
					17.05.03		knowledge of cabinet materials and adhesives				
					17.05.04		knowledge of removal and installation procedures for cabinetry				
					17.05.05		ability to replace spacers				
					17.05.06		ability to recover vinyl surfaces				
					17.05.07		ability to refinish wood surfaces				
					17.05.08		ability to replace laminates				
					17.05.09		ability to replace hardware				
					17.05.10		ability to replace panels in cabinets				
					17.05.11		ability to reassemble drawers				
					17.05.12		ability to replace cabinet/closet doors				
					17.05.13		ability to replace trim and molding				

Sub-task

17.06 Replaces interior accessories. Supporting Knowledge & Abilities

<u>NF</u>	<u>NS</u>	<u>PE</u>	<u>NB</u>	<u>QC</u>	<u>ON</u>	<u>MB</u>	<u>SK</u>	<u>AB</u>	<u>BC</u>	<u>NT</u>	<u>YK</u>
ND	yes	yes	yes	yes	yes	yes	ND	yes	yes	ND	yes
					17.06.01						
					17.06.02						
					17.06.03						
					17.06.04						
					17.06.05						

Task 18 Maintains exterior components.

Related Components:

Aluminum skin (sidewalls) roofing, aluminum roofing, EPDM rubber sheeting, fibreglass sheeting and caps, windows, doors, storage hatches, vents (roof, fridge, stoves, furnace), door and hatch holders, fender skirts, rockguard, clearance/taillights, bottom board, under belly materials, and insulation (fibreglass, foam), moldings, vinyl inserts, putty, butyl tape, silicone, screw, staples, adhesives, sealants, plywood/paneling, various lumber.

Tools and Equipment:

Common hand tools, air guns (nailer and staple gun) rubber mallet, saws, drills and bits, screwdrivers, hammer, saws (jig saw, skill saw, sawsall, holesaw, table saw, mitre saw, hack saw), pliers, flooring adhesive, spreader (trowel), caulking gun, socket set, square, level, sander, grinder, sandpaper, paint brushes, cleaning material (rags etc), tape measure, pop riveter, wire strippers, wood clamps, router and bits, wire cutters, crimpers, screening tool, utility knife, tin snips, glass cutters, hydraulic tester, cable crimper, volt/Ohm meter DMM (Digital multi-meter).

Sub-task

18.01 Inspects exterior components.

Supporting Knowledge & Abilities

<u>NF</u>	<u>NS</u>	<u>PE</u>	<u>NB</u>	<u>QC</u>	<u>ON</u>	<u>MB</u>	<u>SK</u>	<u>AB</u>	<u>BC</u>	<u>NT</u>	<u>YK</u>
ND	yes	yes	yes	yes	yes	yes	ND	yes	yes	ND	yes
					18.01.01						knowledge of RV construction techniques
					18.01.02						knowledge of potential defects to material
					18.01.03						knowledge of inspection procedures and sequence
					18.01.04						knowledge of inspection checklist
					18.01.05						ability to identify defects in sidewalls, roof and underbelly such as dents, scratches, holes, gouges, structural, tears, stains
					18.01.06						ability to identify defects in exterior opening trims, seals, such as leaking windows, doors, molding, vents, roofs, improperly installed trims, seals
					18.01.07						ability to identify defects in slide-out mechanism and lifting mechanism
					18.01.08						ability to complete inspection checklist

Sub-task

18.02 Replaces roofing.

Supporting Knowledge & Abilities

<u>NF</u>	<u>NS</u>	<u>PE</u>	<u>NB</u>	<u>QC</u>	<u>ON</u>	<u>MB</u>	<u>SK</u>	<u>AB</u>	<u>BC</u>	<u>NT</u>	<u>YK</u>
ND	yes	yes	yes	yes	yes	yes	ND	yes	yes	ND	yes
					18.02.01						knowledge of roof construction
					18.02.02						knowledge of repair procedures
					18.02.03						knowledge of material types (rubber, aluminum, fiberglass, galvanized, ABS)
					18.02.04						ability to remove damaged roofing material

Supporting Knowledge & Abilities

18.02.05	ability to install new roofing material
18.02.06	ability to remove and re-install roof fixtures such as vents, roof AC, antennas, roof racks/ladder, to allow repairs to roof structure
18.02.07	ability to remove and install moldings, trims, awnings
18.02.08	ability to seal, patch roof
18.02.09	ability to remove and install rafters and wiring, ducting and insulation
18.02.10	ability to repair roof on fold downs

Sub-task

18.03 Replaces sidewalls.

Supporting Knowledge & Abilities

<u>NF</u>	<u>NS</u>	<u>PE</u>	<u>NB</u>	<u>QC</u>
ND	yes	yes	yes	yes

<u>ON</u>	<u>MB</u>	<u>SK</u>	<u>AB</u>	<u>BC</u>	<u>NT</u>	<u>YK</u>
yes	yes	ND	yes	yes	ND	yes

18.03.01	knowledge of sidewall construction
18.03.02	knowledge of repair procedures
18.03.03	knowledge of material types such as fibreglass and aluminum
18.03.04	knowledge of dimensions and physical characteristics of unit and materials
18.03.05	ability to remove aluminum skin
18.03.06	ability to replace aluminum skin
18.03.07	ability to repair damaged fibreglass and FRP (fibre reinforced plastic) areas
18.03.08	ability to replace canvas (folddowns) or remove canvas for repairs
18.03.09	ability to remove items such as windows, doors, hatches, vents, outlets, awnings, slide-outs

Supporting Knowledge & Abilities

18.03.10	ability to replace windows, doors, hatches, vents, outlets, awnings, slide-outs
18.03.11	ability to replace sections of fibreglass and FRP walls
18.03.12	ability to seal all joints, openings
18.03.13	ability to remove moldings and trims
18.03.14	ability to replace moldings and trims
18.03.15	ability to repair structural damage
18.03.16	ability to install decals and striping

Sub-task

18.04 Repairs underbelly.

Supporting Knowledge & Abilities

<u>NF</u>	<u>NS</u>	<u>PE</u>	<u>NB</u>	<u>QC</u>	<u>ON</u>	<u>MB</u>	<u>SK</u>	<u>AB</u>	<u>BC</u>	<u>NT</u>	<u>YK</u>
ND	yes	yes	yes	yes	yes	yes	ND	yes	yes	ND	yes
					18.04.01						
						18.04.02					
						18.04.03					
						18.04.04					
						18.04.05					
						18.04.06					
						18.04.07					
						18.04.08					
						18.04.09					
						18.04.10					
						18.04.11					

Sub-task**18.05 Repairs exterior openings.****Supporting Knowledge & Abilities**

<u>NF</u>	<u>NS</u>	<u>PE</u>	<u>NB</u>	<u>QC</u>	<u>ON</u>	<u>MB</u>	<u>SK</u>	<u>AB</u>	<u>BC</u>	<u>NT</u>	<u>YK</u>
ND	yes	yes	yes	yes	yes	yes	ND	yes	yes	ND	yes
					18.05.01						knowledge of installation of windows, doors, vents, compartment doors, hatches etc.
					18.05.02						knowledge of the construction of above components
					18.05.03						knowledge of repair/replacement procedures
					18.05.04						ability to replace roof fixtures
					18.05.05						ability to repair roof fixtures
					18.05.06						ability to repair windows
					18.05.07						ability to replace windows
					18.05.08						ability to repair doors (entrance, storage)
					18.05.09						ability to replace doors (entrance, storage)
					18.05.10						ability to repair wheel wells
					18.05.11						ability to replace wheel wells
					18.05.12						ability to replace rockguards
					18.05.13						ability to seal openings

Sub-task**18.06 Repairs roof lifting systems.****Supporting Knowledge & Abilities**

<u>NF</u>	<u>NS</u>	<u>PE</u>	<u>NB</u>	<u>QC</u>	<u>ON</u>	<u>MB</u>	<u>SK</u>	<u>AB</u>	<u>BC</u>	<u>NT</u>	<u>YK</u>
ND	yes	yes	yes	yes	yes	yes	ND	yes	yes	ND	yes
					18.06.01						knowledge of cable system
					18.06.02						knowledge of gear system

Supporting Knowledge & Abilities

18.06.03	knowledge of repair procedures for different systems
18.06.04	knowledge of testing procedures
18.06.05	knowledge of flexible LP gas supply line
18.06.06	knowledge of flexible potable water supply line
18.06.07	knowledge of flexible waste water drain
18.06.08	ability to repair lift arms and pulleys on fold downs
18.06.09	ability to replace lift arms and pulley on fold downs
18.06.10	ability to replace and adjust cables
18.06.11	ability to replace roof lifting systems
18.06.12	ability to repair mechanical components
18.06.13	ability to replace mechanical components
18.06.14	ability to adjust all systems
18.06.15	ability to test all systems
18.06.16	ability to replace flexible LP gas supply lines
18.06.17	ability to repair flexible potable water supply line
18.06.18	ability to repair flexible waste water drain

Sub-task

18.07 Repairs slide-out systems.

Supporting Knowledge & Abilities

<u>NF</u>	<u>NS</u>	<u>PE</u>	<u>NB</u>	<u>QC</u>	<u>ON</u>	<u>MB</u>	<u>SK</u>	<u>AB</u>	<u>BC</u>	<u>NT</u>	<u>YK</u>
ND	yes	yes	yes	yes	yes	yes	ND	yes	yes	ND	yes
					18.07.01		knowledge of electrical system				
					18.07.02		knowledge of hydraulic system				

Supporting Knowledge & Abilities

18.07.03	knowledge of cable system
18.07.04	knowledge of gear system
18.07.05	knowledge of repair procedures for different systems
18.07.06	knowledge of testing procedures
18.07.07	knowledge of flexible LP gas supply line
18.07.08	knowledge of flexible potable water supply line
18.07.09	knowledge of flexible waste water drain
18.07.10	ability to replace and adjust cables
18.07.11	ability to replace and adjust hydraulic lines and cylinders
18.07.12	ability to replace slide-outs and slide-out actuating systems
18.07.13	ability to diagnose electrical components
18.07.14	ability to repair electrical components
18.07.15	ability to repair mechanical components
18.07.16	ability to replace mechanical components
18.07.17	ability to adjust all systems
18.07.18	ability to test all systems
18.07.19	ability to replace flexible LP gas supply lines
18.07.20	ability to repair flexible potable water supply line
18.07.21	ability to repair flexible waste water drain

BLOCK G

TOWING AND CHASSIS COMPONENTS

Trends: Towards increased use of shock absorbers and tri-axles and the use of disc brakes on trailers as well as 5th wheel hitches and three-in-one balls.

Task 19 Maintains undercarriage components on towed vehicles.

Related Components: Axles, saddles, spindles, inner and outer bearings and races, d-washer, castellated nuts, grease seals, axle grease, dust caps, cotter pins, u-bolts and nuts, springs, hangers, shackles, bushings, equalizer, spring bolts, spring centre bolts, torsion axles, shock absorbers, rubber bushings, wheels, tires, screw tongue jacks, hydraulic tongue jacks, electric tongue jack (mechanical, hydraulic and electric landing gear), electric motors, ball couplers, king pin and box, jack legs, gears, safety chains, pin locks, roller pins, tapered pins, frame, bumpers, paint, undercoating materials, lubricants, skid plate, hydraulic fluid, cleaning solvent, rags.

Tools and Equipment: Torque wrench, impact wrench and sockets, wrenches, hand tools, tape measure, jack stands, floor jack, air chisel, level, drill and bits, grinder and blades, cutting torch, tread depth gauge, tire valve stem tool, tire pressure gauge, air inflator, valve, valve installer tool, wire brush, wire connections, crimpers, wire strippers, bearing packer, air compressor, air nozzle, micrometer, bearing puller.

Sub-task

19.01 Services wheel and tires (towed).

Supporting Knowledge & Abilities

<u>NF</u>	<u>NS</u>	<u>PE</u>	<u>NB</u>	<u>QC</u>	<u>ON</u>	<u>MB</u>	<u>SK</u>	<u>AB</u>	<u>BC</u>	<u>NT</u>	<u>YK</u>
ND	yes	yes	yes	yes	yes	yes	ND	yes	no	ND	yes

19.01.01 knowledge of left and right threaded bolts for rim and tire compatibility

19.01.02 knowledge of tire tread wear patterns

19.01.03 knowledge of tire pressures

19.01.04 knowledge of tire types and load ranges

Supporting Knowledge & Abilities

19.01.05	knowledge of wheel nut torque
19.01.06	knowledge of signs of wheel damage
19.01.07	knowledge of grease seal sizes
19.01.08	knowledge of bearing diameters
19.01.09	knowledge of spindle diameter
19.01.10	knowledge of unbalanced tires
19.01.11	ability to interpret tire tread wear
19.01.12	ability to inflate tires
19.01.13	ability to change tires
19.01.14	ability to change tire valves
19.01.15	ability to jack and raise trailers

Sub-task

19.02 Repairs axles, hubs and bearings.

Supporting Knowledge & Abilities

<u>NF</u>	<u>NS</u>	<u>PE</u>	<u>NB</u>	<u>QC</u>	<u>ON</u>	<u>MB</u>	<u>SK</u>	<u>AB</u>	<u>BC</u>	<u>NT</u>	<u>YK</u>
ND	yes	yes	yes	yes	yes	yes	ND	yes	yes	ND	yes

19.02.01	knowledge of torque requirements
19.02.02	knowledge of axle capacities and attached components
19.02.03	knowledge of types of lubricants
19.02.04	knowledge of bearing wear and troubleshooting techniques
19.02.05	knowledge of axle arc and toe adjustment
19.02.06	knowledge of bearing types and sizes
19.02.07	knowledge of bolt patterns on hubs

Supporting Knowledge & Abilities

- 19.02.08 ability to replace axles
- 19.02.09 ability to replace bearings and adjust wheel bearings
- 19.02.10 ability to repack bearings
- 19.02.11 ability to replace grease seals
- 19.02.12 ability to replace bearing races

Sub-task

19.03 Replaces suspension systems. Supporting Knowledge & Abilities

<u>NF</u>	<u>NS</u>	<u>PE</u>	<u>NB</u>	<u>QC</u>	<u>ON</u>	<u>MB</u>	<u>SK</u>	<u>AB</u>	<u>BC</u>	<u>NT</u>	<u>YK</u>
ND	yes	yes	yes	yes	yes	yes	ND	yes	yes	ND	yes

- 19.03.01 knowledge of bushing wear
- 19.03.02 knowledge of hanger wear
- 19.03.03 knowledge of spring capacities
- 19.03.04 knowledge of spring hanger height
- 19.03.05 knowledge of spring arc and length
- 19.03.06 knowledge of bushing types
- 19.03.07 knowledge of shock absorber types
- 19.03.08 knowledge of suspension types
- 19.03.09 knowledge of axle suspension types such as steel spring, torsion and rubber
- 19.03.10 ability to replace components such as springs, spring bolts, spring hangers spring shackles, and spring bushings
- 19.03.11 ability to replace equalizers
- 19.03.12 ability to replace shock absorber

Supporting Knowledge & Abilities

- 19.03.13 ability to replace rubbers
- 19.03.14 ability to inspect shock absorber
- 19.03.15 ability to test ride

Sub-task

19.04 Inspects frame.

Supporting Knowledge & Abilities

<u>NF</u>	<u>NS</u>	<u>PE</u>	<u>NB</u>	<u>QC</u>	<u>ON</u>	<u>MB</u>	<u>SK</u>	<u>AB</u>	<u>BC</u>	<u>NT</u>	<u>YK</u>
ND	yes	yes	yes	yes	yes	yes	ND	yes	yes	ND	yes

- 19.04.01 knowledge of rust and electrolysis
- 19.04.02 knowledge of undercoating materials
- 19.04.03 knowledge of paints, primers
- 19.04.04 knowledge of frame types such as 5th wheel and trailer
- 19.04.05 knowledge of "A" frames and reaches
- 19.04.06 knowledge of sizes of king pins and boxes
- 19.04.07 knowledge of types and sizes of hitch couplers
- 19.04.08 knowledge of bumper types and attachments
- 19.04.09 knowledge of painting and undercoating techniques
- 19.04.10 knowledge of frame material such as ferrous and aluminum
- 19.04.11 ability to replace bumpers
- 19.04.12 ability to sand, prep, prime, paint and undercoat
- 19.04.13 ability to spray on materials
- 19.04.14 ability to adjust hitch couplers

Sub-task

19.05 Repairs tongue jacks and landing gear.

Supporting Knowledge & Abilities

<u>NF</u>	<u>NS</u>	<u>PE</u>	<u>NB</u>	<u>QC</u>	<u>ON</u>	<u>MB</u>	<u>SK</u>	<u>AB</u>	<u>BC</u>	<u>NT</u>	<u>YK</u>
ND	yes	yes	yes	yes	yes	yes	ND	yes	yes	ND	yes

- 19.05.01 knowledge of gears
- 19.05.02 knowledge of jacks and landing gear capacities
- 19.05.03 knowledge of jack types such as mechanical, hydraulic and electric
- 19.05.04 knowledge of trailer hook up techniques
- 19.05.05 ability to replace rolled pins
- 19.05.06 ability to replace tapered pins
- 19.05.07 ability to replace tongue jacks
- 19.05.08 ability to replace 5th wheel landing legs
- 19.05.09 ability to replace motor
- 19.05.10 ability to replace gears
- 19.05.11 ability to replace electric switch

Task 20 Maintains braking systems.

Related Components:

Backing plate assemblies, shoes, activating levers, adjustment springs, anchor springs, electromagnets, adjusters, lubricants, wire, wire connectors, brake cylinders, brake fluid, brake lines, brake line fittings and connectors, electrical tape, cable ties, shrink wrap, master cylinders, hydraulic actuators, brake controls, wire pin plugs, sealants, DC circuit breakers, fuses, variable resistors, break-a-ways and cable, 12 volt batteries, wheel drums, mounting hardware, brake cleaning fluid.

Tools and Equipment:

Brake adjustment tools, brake spring pliers, anchor spring tool, wire strippers, wire crimpers, voltmeter, ammeter with induction pickup, DC test light, wrenches, hand tools, tape measure, easy outs, thread taps, drill and bits, vacuum cleaner.

Sub-task**20.01 Repairs electric braking components.****Supporting Knowledge & Abilities**

<u>NF</u> ND	<u>NS</u> yes	<u>PE</u> yes	<u>NB</u> yes	<u>QC</u> yes	<u>ON</u> yes	<u>MB</u> yes	<u>SK</u> ND	<u>AB</u> yes	<u>BC</u> yes	<u>NT</u> ND	<u>YK</u> yes
					20.01.01						knowledge of troubleshooting procedures
					20.01.02						knowledge of DC electricity
					20.01.03						knowledge of brake lining materials
					20.01.04						knowledge of wire sizing
					20.01.05						knowledge of location of brake switch
					20.01.06						knowledge of location of brake controller
					20.01.07						knowledge of typical trailer brake wiring circuit
					20.01.08						knowledge of location and function of brake-away switch
					20.01.09						knowledge of wire colour codes
					20.01.10						knowledge of location of primary and secondary shoes
					20.01.11						knowledge of operation and function of brake assemblies (shoes, actuating levers)
					20.01.12						knowledge of brake diameters
					20.01.13						knowledge of brake shoe widths
					20.01.14						ability to insulate connectors
					20.01.15						ability to install and adjust brake controllers
					20.01.16						ability to install and adjust brake shoes
					20.01.17						ability to install DC circuit protectors
					20.01.18						ability to replace brake-away switches
					20.01.19						ability to jack and secure trailer

Supporting Knowledge & Abilities

20.01.20	ability to diagnose brake controller problems and scored brake drums
20.01.21	ability to clean brake shoes and brake drums
20.01.22	ability to isolate electrical problems between tow vehicle and trailers
20.01.23	ability to test electrical power
20.01.24	ability to test voltage and amp drop
20.01.25	ability to test braking system

Sub-task

20.02 Repairs hydraulic braking system.

Supporting Knowledge & Abilities

<u>NF</u>	<u>NS</u>	<u>PE</u>	<u>NB</u>	<u>QC</u>	<u>ON</u>	<u>MB</u>	<u>SK</u>	<u>AB</u>	<u>BC</u>	<u>NT</u>	<u>YK</u>
ND	yes	yes	yes	yes	yes	yes	ND	yes	yes	ND	no
					20.02.01		knowledge of troubleshooting procedures				
					20.02.02		knowledge of master cylinders				
					20.02.03		knowledge of wheel cylinders				
					20.02.04		knowledge of location and size of brake lines				
					20.02.05		knowledge of brake line materials				
					20.02.06		knowledge of brake fluid				
					20.02.07		knowledge of operation of actuator				
					20.02.08		knowledge of weight codes and limitations				
					20.02.09		knowledge of easy outs				
					20.02.10		knowledge of brake system tests				
					20.02.11		ability to replace master cylinder, wheel cylinder and wheel brake lines				

Supporting Knowledge & Abilities

20.02.12	ability to double flare brake lines
20.02.13	ability to bleed brake lines
20.02.14	ability to fill master cylinder
20.02.15	ability to flush brake system
20.02.16	ability to adjust actuator
20.02.17	ability to check for leaks
20.02.18	ability to lubricate actuators
20.02.19	ability to remove broken bleeder screws

Task 21 Maintains hitching system.

Related Components: Class I, II, III, IV, and V receiver hitches, 5th wheel hitches (king pin style, goose neck), nuts and bolts, equalizers, anti-sway devices, swing hitch, balls, ball mounts, lubricants, hitch pins and clips, safety chains, clevis, shackles, quick links, s-hooks.

Tools and Equipment: Torque wrench, impact wrench, cutting torch, drill and bits, hammer, punch (centre), hand tools, angle grinder.

Sub-task

21.01 Replaces mechanical towing components. Supporting Knowledge & Abilities

<u>NF</u>	<u>NS</u>	<u>PE</u>	<u>NB</u>	<u>QC</u>	<u>ON</u>	<u>MB</u>	<u>SK</u>	<u>AB</u>	<u>BC</u>	<u>NT</u>	<u>YK</u>
ND	yes	yes	yes	yes	yes	yes	ND	yes	yes	ND	yes

21.01.01	knowledge of troubleshooting procedures
21.01.02	knowledge of 5 th wheel hitch types
21.01.03	knowledge of hitch classes and capabilities
21.01.04	knowledge of 5 th wheel hitch

Supporting Knowledge & Abilities

21.01.05	knowledge of how to adjust pin box height
21.01.06	knowledge of ball mount heights
21.01.07	knowledge of tongue coupler sizes
21.01.08	knowledge of ball sizes
21.01.09	knowledge of weight distributing hitch height and angle
21.01.10	knowledge of trailer hook-up and un-hooking procedures
21.01.11	knowledge of lubricants and uses
21.01.12	knowledge of slick discs
21.01.13	ability to co-ordinate 5 th wheel hitch height to king pin box height
21.01.14	ability to install and adjust weight distributing hitch
21.01.15	ability to replace hitches (Class I, II, III and IV)
21.01.16	ability to install and adjust anti-sway devices
21.01.17	ability to fish bolts along frame members
21.01.18	ability to road test anti-sway device
21.01.19	ability to hook up, unhook and maneuver towed vehicle

Sub-task

21.02 Installs towing components.

Supporting Knowledge & Abilities

<u>NF</u>	<u>NS</u>	<u>PE</u>	<u>NB</u>	<u>QC</u>	<u>ON</u>	<u>MB</u>	<u>SK</u>	<u>AB</u>	<u>BC</u>	<u>NT</u>	<u>YK</u>
ND	yes	yes	yes	yes	yes	yes	ND	yes	yes	ND	yes
							21.02.01		knowledge of wiring harness for towing vehicles		
							21.02.02		knowledge of fibre optic wiring		
							21.02.03		ability to install hitches		
							21.02.04		ability to install transmission coolers		
							21.02.05		ability to match hitch to load being pulled		

BLOCK H

ACCESSORIES

Trends: Towards the installation of more electrical and mechanical accessories that support entertainment systems, leisure activities and R.V. safety.

Task 22 Performs accessories/system installations.

Related Components:

Automatic winterizing system, outside shower, telescopic dump systems, waste tank heater, tank flushing systems, macerators, fresh water filters, sewer hose adapters, pump conversion kit, drain hose storage tubes, pump noise dampers, sewer hose supports, water hose auto-rollup, water regulators, water heater, (110v. heating adapters), high pressure accumulators, ABS galvanized, pipe dope, Teflon tape, screws, bolt and hardware, plumbers strapping, plumbers grease, AC electrical wire, DC electrical wire, electric connections, snap fasteners, eyelets, rope, cord, assorted fasteners, twist lock, electrical tape, sealants, lubricants, coaxial ends, hydraulic fluid, varsol, paints, 9v batteries, smoke detectors, LPG detectors, CO detectors, radios, stereo, TV, VCR, CD players, coaxial splitter, CB radio, radio antenna, TV antenna, speakers, coaxial cable, satellite dish, spare tire racks, bicycle carriers, transmission coolers, electric and hydraulic leveling systems, stabilizer jacks (manual, electric and hydraulic transmission pumps), storage pods, awnings, add-a-rooms, microwaves, toaster ovens, clothes washers and dryers, dishwasher, ice makers, generators, inverters, vacuum cleaner, air horns, cell phones, dirt skirts, solar panels, mud flaps, rear vision camera, ceiling fans.

Tools and Equipment:

Common hand tools, saws, drills and bits, pipe wrenches, hole coaxial crimper, PEX crimper, DC test light, VOM, impact wrench, ammeter with induction, measuring tape, pencil and paper, circular saws, reciprocating saws, LP leak detector, LP electronic leak detector, butane ignitor, square, plumb line, ladder.

Sub-task

22.01 Installs/replaces plumbing accessories.

Supporting Knowledge & Abilities

<u>NF</u>	<u>NS</u>	<u>PE</u>	<u>NB</u>	<u>QC</u>	<u>ON</u>	<u>MB</u>	<u>SK</u>	<u>AB</u>	<u>BC</u>	<u>NT</u>	<u>YK</u>
ND	yes	yes	yes	yes	yes	yes	ND	yes	yes	ND	yes

Supporting Knowledge & Abilities

- 22.01.01 knowledge of operation and location of plumbing accessories
- 22.01.02 knowledge of installation procedures to replace or install plumbing accessories
- 22.01.03 ability to prepare/modify site for plumbing accessories
- 22.01.04 ability to position and secure plumbing accessories
- 22.01.05 ability to hook-up piping and electrical
- 22.01.06 ability to restore interior/exterior to finished appearance

Sub-task

22.02 Installs/replaces entertainment and communication systems.

Supporting Knowledge & Abilities

<u>NF</u>	<u>NS</u>	<u>PE</u>	<u>NB</u>	<u>QC</u>	<u>ON</u>	<u>MB</u>	<u>SK</u>	<u>AB</u>	<u>BC</u>	<u>NT</u>	<u>YK</u>
ND	yes	yes	yes	yes	yes	yes	ND	yes	yes	ND	no

- 22.02.01 knowledge of proposed location
- 22.02.02 knowledge of system operation and set-up requirements
- 22.02.03 knowledge of procedure to replace or install systems
- 22.02.04 ability to prepare/modify site for systems
- 22.02.05 ability to position and secure systems
- 22.02.06 ability to hook up electrical
- 22.02.07 ability to restore interior/exterior to finished appearance

Sub-task

22.03 Installs/replaces small electrical household appliances.

Supporting Knowledge & Abilities

<u>NF</u>	<u>NS</u>	<u>PE</u>	<u>NB</u>	<u>QC</u>	<u>ON</u>	<u>MB</u>	<u>SK</u>	<u>AB</u>	<u>BC</u>	<u>NT</u>	<u>YK</u>
ND	yes	yes	yes	yes	yes	yes	ND	yes	yes	ND	yes

- 22.03.01 knowledge of proposed location
- 22.03.02 knowledge of appliance(s) set-up and operation
- 22.03.03 knowledge of procedure to replace or install appliance
- 22.03.04 ability to prepare/modify site for appliance
- 22.03.05 ability to position and secure appliance
- 22.03.06 ability to hook up electrical
- 22.03.07 ability to restore interior/exterior surfaces to finished appearance

Sub-task

22.04 Installs/replaces safety and security systems.

Supporting Knowledge & Abilities

<u>NF</u>	<u>NS</u>	<u>PE</u>	<u>NB</u>	<u>QC</u>	<u>ON</u>	<u>MB</u>	<u>SK</u>	<u>AB</u>	<u>BC</u>	<u>NT</u>	<u>YK</u>
ND	yes	yes	yes	yes	yes	yes	ND	yes	yes	ND	no

- 22.04.01 knowledge of proposed location
- 22.04.02 knowledge of types of security systems and types of detectors
- 22.04.03 knowledge of procedure to replace or install systems
- 22.04.04 ability to prepare/modify site for systems
- 22.04.05 ability to position and secure systems
- 22.04.06 ability to hook up electrical
- 22.04.07 ability to restore interior to finished appearance

Sub-task

22.05 Installs/replaces storage and access systems. Supporting Knowledge & Abilities

<u>NF</u>	<u>NS</u>	<u>PE</u>	<u>NB</u>	<u>QC</u>	<u>ON</u>	<u>MB</u>	<u>SK</u>	<u>AB</u>	<u>BC</u>	<u>NT</u>	<u>YK</u>
ND	yes	yes	yes	yes	yes	yes	ND	yes	yes	ND	yes
					22.05.01		knowledge of proposed location				
					22.05.02		knowledge of operation of systems				
					22.05.03		knowledge of procedure to replace or install systems				
					22.05.04		knowledge of types of sealant application				
					22.05.05		ability to prepare/modify site for systems				
					22.05.06		ability to position and secure systems				
					22.05.07		ability to hook up electrical for inverters and solar panels				
					22.05.08		ability to apply sealant				
					22.05.09		ability to restore exterior to finished appearance				

Sub-task

22.06 Installs/replaces power supply systems. Supporting Knowledge & Abilities

<u>NF</u>	<u>NS</u>	<u>PE</u>	<u>NB</u>	<u>QC</u>	<u>ON</u>	<u>MB</u>	<u>SK</u>	<u>AB</u>	<u>BC</u>	<u>NT</u>	<u>YK</u>
ND	yes	yes	yes	yes	yes	yes	ND	yes	yes	ND	yes
					22.06.01		knowledge of proposed location				
					22.06.02		knowledge of operation of power supply systems such as solar, inverter and generator				
					22.06.03		knowledge of procedure to replace or install systems				
					22.06.04		ability to prepare/modify site for systems				
					22.06.05		ability to position and secure systems				

Supporting Knowledge & Abilities

- 22.06.06 ability to hook up electrical and fuel for generator
- 22.06.07 ability to restore interior/exterior to finished appearance

Sub-task

22.07 Installs/replaces LP accessories.

Supporting Knowledge & Abilities

<u>NF</u>	<u>NS</u>	<u>PE</u>	<u>NB</u>	<u>QC</u>	<u>ON</u>	<u>MB</u>	<u>SK</u>	<u>AB</u>	<u>BC</u>	<u>NT</u>	<u>YK</u>
ND	yes	yes	yes	yes	yes	yes	ND	yes	yes	ND	yes

- 22.07.01 knowledge of proposed location
- 22.07.02 knowledge of operating requirements of LP
- 22.07.03 knowledge of procedure to replace or install systems
- 22.07.04 ability to prepare/modify site for systems
- 22.07.05 ability to position and secure systems
- 22.07.06 ability to hook up to LP gas system
- 22.07.07 ability to restore to finished appearance

Sub-task

22.08 Installs/replaces leveling, stabilizing and jacking systems.

Supporting Knowledge & Abilities

<u>NF</u>	<u>NS</u>	<u>PE</u>	<u>NB</u>	<u>QC</u>	<u>ON</u>	<u>MB</u>	<u>SK</u>	<u>AB</u>	<u>BC</u>	<u>NT</u>	<u>YK</u>
ND	yes	yes	yes	yes	yes	yes	ND	yes	yes	ND	yes

- 22.08.01 knowledge of proposed location
- 22.08.02 knowledge of leveling and stabilizing system(s) operation

Supporting Knowledge & Abilities

22.08.03	knowledge of procedure to replace or install systems
22.08.04	ability to prepare/modify site for systems
22.08.05	ability to position and secure systems
22.08.06	ability to hook up electrical
22.08.07	ability to hook up hydraulic systems
22.08.08	ability to fill and bleed hydraulic systems
22.08.09	ability to restore interior/exterior to finished appearance

Sub-task

22.09 Installs/replaces auxiliary chassis and towing components (suspension aids).

Supporting Knowledge & Abilities

<u>NF</u>	<u>NS</u>	<u>PE</u>	<u>NB</u>	<u>QC</u>	<u>ON</u>	<u>MB</u>	<u>SK</u>	<u>AB</u>	<u>BC</u>	<u>NT</u>	<u>YK</u>
ND	yes	yes	yes	yes	yes	yes	ND	yes	yes	ND	yes
					22.09.01		knowledge of proposed location				
					22.09.02		knowledge of operation of components				
					22.09.03		knowledge of procedure to replace or install components				
					22.09.04		knowledge of attaching procedure				
					22.09.05		ability to prepare/modify site for components				
					22.09.06		ability to position and secure components				
					22.09.07		ability to hook up components				

Sub-task

22.10 Installs/replaces awning, skirting and add-a-rooms.

Supporting Knowledge & Abilities

NF
ND NS
yes PE
yes NB
yes QC
yes

ON
yes MB
yes SK
ND AB
yes BC
yes NT
ND YK
yes

- 22.10.01 knowledge of proposed location
- 22.10.02 knowledge of operation of awnings, skirting and add-a-room
- 22.10.03 knowledge of procedure to replace or install components
- 22.10.04 ability to prepare/modify site for systems
- 22.10.05 ability to position and secure systems
- 22.10.06 ability to install and seal fasteners
- 22.10.07 ability to restore exterior to finished appearance

Sub-task

22.11 Installs/replaces range hoods.

Supporting Knowledge & Abilities

NF
ND NS
yes PE
yes NB
yes QC
yes

ON
yes MB
yes SK
ND AB
yes BC
yes NT
ND YK
yes

- 22.11.01 knowledge of proposed location
- 22.11.02 knowledge of operation of range hoods
- 22.11.03 knowledge of procedure to replace or install range hoods and vents
- 22.11.04 knowledge of vent sizes
- 22.11.05 ability to prepare/modify site for systems
- 22.11.06 ability to position and secure systems
- 22.11.07 ability to hook up electrical and run wiring harnesses
- 22.11.08 ability to restore interior to finished appearance

Sub-task

22.12 Installs/replaces ice makers. Supporting Knowledge & Abilities

<u>NF</u>	<u>NS</u>	<u>PE</u>	<u>NB</u>	<u>QC</u>	<u>ON</u>	<u>MB</u>	<u>SK</u>	<u>AB</u>	<u>BC</u>	<u>NT</u>	<u>YK</u>
ND	yes	yes	yes	yes	yes	yes	ND	yes	yes	ND	no
					22.12.01		knowledge of proposed location				
					22.12.02		knowledge of operation of ice makers				
					22.12.03		knowledge of procedure to replace or install ice makers				
					22.12.04		ability to prepare/modify site for ice makers				
					22.12.05		ability to position and secure systems				
					22.12.06		ability to hook up electrical supply and water supply				
					22.12.07		ability to isolate connection points in refrigerator				
					22.12.08		ability to differentiate fridge parts from ice maker parts				
					22.12.09		ability to restore exterior to finished appearance				

Task 23 Maintains accessories/systems.

Related Components:

Automatic winterizing system, outside shower, telescopic dump systems, waste tank heater, tank flushing systems, macerators, fresh water filters, sewer hose adapters, pump conversion kit, drain hose storage tubes, pump noise dampers, sewer hose supports, water hose auto-rollup, water regulators, water heater (110v. heating adapters), high pressure accumulators, ABS, galvanized pipe dope, lubricants, pipe tape, screws, bolts and hardware, plumbers strapping, plumbers grease, AC electrical wire, DC electrical wire, electric connections, snap fasteners, eyelets, rope, cord, assorted fasteners, twist lock, electrical tape, sealants, lubricants, coaxial ends, hydraulic fluid, varsol, paints, 9v batteries, smoke detectors, LPG detectors, CO detectors, radios, stereo, TV, VCR, CD players, coaxial splitter, CB radio, radio antenna, TV antenna, speakers, coaxial cable, satellite dish, spare tire racks, bicycle carriers, transmission coolers, electric and hydraulic leveling systems, stabilizer jacks (manual, electric and hydraulic) transmission pumps, storage pods, awnings, add-a-rooms.

Tools and Equipment:

Common hand tools, saws, drills and bits, pipe wrenches, hole saws, hole punch, snap fastener tools, wire strippers and crimpers, coaxial crimper, PEX crimper, DC test light, VOM, impact wrench, ammeter with induction, measuring tape, pencil and paper, circular saws, reciprocating saws, LP leak solution, LP electronic leak detector, butane ignitor, square, plumb line, ladder.

Sub-task

23.01 Repairs plumbing accessories.

Supporting Knowledge & Abilities

NF NS PE NB QC
ND yes yes yes yes

ON MB SK AB BC NT YK
yes yes ND yes yes ND yes

- 23.01.01 knowledge of operation of plumbing accessories and systems
- 23.01.02 knowledge of removal and installation procedures
- 23.01.03 knowledge of repair procedures to determine if accessory is repairable
- 23.01.04 ability to replace macerator system components
- 23.01.05 ability to replace filters

Sub-task

23.02 Repairs entertainment and communication systems.

Supporting Knowledge & Abilities

NF NS PE NB QC
ND yes yes yes yes

ON MB SK AB BC NT YK
yes yes ND yes yes ND no

- 23.02.01 knowledge of operation of components
- 23.02.02 knowledge of repair and troubleshooting procedures
- 23.02.03 knowledge of removal and installation procedures
- 23.02.04 ability to replace TV antenna parts

Supporting Knowledge & Abilities

23.02.05	ability to replace TV coaxial supply components
23.02.06	ability to replace 12 volt power supply components
23.02.07	ability to replace fuses/circuit protectors
23.02.08	ability to replace 12 volt receptacles
23.02.09	ability to verify AC/DC power supply
23.02.10	ability to replace speakers
23.02.11	ability to replace speaker wire and coaxial cable
23.02.12	ability to install electronic interference filters

Sub-task

23.03 Repairs small electrical household appliances.

Supporting Knowledge & Abilities

<u>NF</u>	<u>NS</u>	<u>PE</u>	<u>NB</u>	<u>QC</u>
ND	yes	yes	yes	yes

<u>ON</u>	<u>MB</u>	<u>SK</u>	<u>AB</u>	<u>BC</u>	<u>NT</u>	<u>YK</u>
yes	yes	ND	yes	yes	ND	no

23.03.01	knowledge of operation and access points
23.03.02	knowledge of removal and installation procedures
23.03.03	knowledge of repair and troubleshooting procedures
23.03.04	ability to verify 12v/120v power supply
23.03.05	ability to replace fuses/breakers
23.03.06	ability to replace water lines/fittings
23.03.07	ability to clean vacuum hose and power head
23.03.08	ability to replace broken wiring

Sub-task

23.04 Services safety and security systems.

Supporting Knowledge & Abilities

<u>NF</u>	<u>NS</u>	<u>PE</u>	<u>NB</u>	<u>QC</u>	<u>ON</u>	<u>MB</u>	<u>SK</u>	<u>AB</u>	<u>BC</u>	<u>NT</u>	<u>YK</u>
ND	yes	yes	yes	yes	yes	yes	ND	yes	yes	ND	no
					23.04.01						knowledge of operation of safety equipment
					23.04.02						knowledge of removal and installation
					23.04.03						ability to verify power supply
					23.04.04						ability to replace fuses, breakers, and batteries
					23.04.05						ability to clean components
					23.04.06						ability to test for proper operation
					23.04.07						ability to change LP shut-off solenoid valve
					23.04.08						ability to repair emergency escape hatches

Sub-task

23.05 Repairs storage and access systems.

Supporting Knowledge & Abilities

<u>NF</u>	<u>NS</u>	<u>PE</u>	<u>NB</u>	<u>QC</u>	<u>ON</u>	<u>MB</u>	<u>SK</u>	<u>AB</u>	<u>BC</u>	<u>NT</u>	<u>YK</u>
ND	yes	yes	yes	yes	yes	yes	ND	yes	yes	ND	yes
					23.05.01						knowledge of operation of access systems
					23.05.02						knowledge of removal and installation procedures
					23.05.03						knowledge of repair procedures
					23.05.04						ability to diagnose electrical and mechanical defects
					23.05.05						ability to repair rungs on step ladders
					23.05.06						ability to remove ladder from coach

Supporting Knowledge & Abilities

23.05.07	ability to remove and install hinges and locking system on storage pods
23.05.08	ability to repair bike rack
23.05.09	ability to replace bike rack parts
23.05.10	ability to replace components on tire carrier

Sub-task

23.06 Repairs power supply systems.

Supporting Knowledge & Abilities

<u>NF</u>	<u>NS</u>	<u>PE</u>	<u>NB</u>	<u>QC</u>
ND	yes	yes	yes	yes

<u>ON</u>	<u>MB</u>	<u>SK</u>	<u>AB</u>	<u>BC</u>	<u>NT</u>	<u>YK</u>
yes	yes	ND	yes	yes	ND	yes

23.06.01	knowledge of troubleshooting procedures
23.06.02	knowledge of types, of solar, inverter (Generator set)
23.06.03	knowledge of AC/DC systems
23.06.04	knowledge of repair procedures
23.06.05	knowledge of electronic components such as diodes, switches, panels
23.06.06	ability to replace diodes
23.06.07	ability to replace switching systems
23.06.08	ability to replace wiring
23.06.09	ability to replace fasteners

Sub-task

23.07 Repairs LP accessories.

Supporting Knowledge & Abilities

<u>NF</u>	<u>NS</u>	<u>PE</u>	<u>NB</u>	<u>QC</u>
ND	yes	yes	yes	yes

<u>ON</u>	<u>MB</u>	<u>SK</u>	<u>AB</u>	<u>BC</u>	<u>NT</u>	<u>YK</u>
yes	yes	ND	yes	yes	ND	yes

Supporting Knowledge & Abilities

23.07.01	knowledge of types and operating requirements of electronic leak detectors, lamps, BBQs
23.07.02	knowledge of DC systems
23.07.03	knowledge of LP systems
23.07.04	knowledge of repair procedure
23.07.05	ability to replace auto shut-off valve
23.07.06	ability to replace detectors
23.07.07	ability to replace wiring systems
23.07.08	ability to replace lamp mantle
23.07.09	ability to replace lamp covers
23.07.10	ability to replace BBQ burners, quick connectors, hoses

Sub-task

23.08 Repairs leveling, stabilizing and jacking systems.

Supporting Knowledge & Abilities

<u>NF</u>	<u>NS</u>	<u>PE</u>	<u>NB</u>	<u>QC</u>	<u>ON</u>	<u>MB</u>	<u>SK</u>	<u>AB</u>	<u>BC</u>	<u>NT</u>	<u>YK</u>
ND	yes	yes	yes	yes	yes	yes	ND	yes	yes	ND	yes
					23.08.01		knowledge of hydraulic systems				
					23.08.02		knowledge of mechanical systems				
					23.08.03		knowledge of electronic systems				
					23.08.04		knowledge of DC systems				
					23.08.05		knowledge of electric motor operation				
					23.08.06		knowledge of routing of wiring				
					23.08.07		knowledge of routing of tubing in hydraulic systems				

Supporting Knowledge & Abilities

23.08.08	knowledge of amount of hydraulic fluid required by system
23.08.09	knowledge of types of hydraulic fluids
23.08.10	ability to bleed hydraulic systems
23.08.11	ability to replace seals
23.08.12	ability to lubricate mechanical systems
23.08.13	ability to replace gears
23.08.14	ability to replace commutator brushes
23.08.15	ability to replace circuit boards
23.08.16	ability to replace switches
23.08.17	ability to replace wire
23.08.18	ability to replace springs and mounts
23.08.19	ability to straighten inner sleeves on stabilizer jacks

Sub-task

23.09 Repairs awning, skirting and add-a-room. Supporting Knowledge & Abilities

<u>NF</u>	<u>NS</u>	<u>PE</u>	<u>NB</u>	<u>QC</u>	<u>ON</u>	<u>MB</u>	<u>SK</u>	<u>AB</u>	<u>BC</u>	<u>NT</u>	<u>YK</u>
ND	yes	yes	yes	yes	yes	yes	ND	yes	yes	ND	no
							23.09.01		knowledge of materials		
							23.09.02		knowledge of securing techniques such as fasteners, snaps, turnbuckles and track and piping		
							23.09.03		knowledge of repair techniques		
							23.09.04		knowledge of removal and installation procedures		

Supporting Knowledge & Abilities

23.09.05	ability to patch holes in fabrics
23.09.06	ability to replace fabrics
23.09.07	ability to replace framework pieces such as arms, rafters, tubes and tension springs
23.09.08	ability to replace fabric, plastic and metal panels

Sub-task

23.10 Repairs range hood.

Supporting Knowledge & Abilities

<u>NF</u>	<u>NS</u>	<u>PE</u>	<u>NB</u>	<u>QC</u>	<u>ON</u>	<u>MB</u>	<u>SK</u>	<u>AB</u>	<u>BC</u>	<u>NT</u>	<u>YK</u>
ND	yes	yes	yes	yes	yes	yes	ND	yes	yes	ND	yes
					23.10.01		knowledge of AC and DC systems				
					23.10.02		knowledge of range hood operations				
					23.10.03		knowledge of repair procedures				
					23.10.04		ability to replace fan blade				
					23.10.05		ability to replace fan motor				
					23.10.06		ability to replace filters, bulbs and switches				
					23.10.07		ability to remove vent opener				
					23.10.08		ability to adjust sleeve length on remote vent opener				

Sub-task

23.11 Repairs ice makers.

Supporting Knowledge & Abilities

<u>NF</u>	<u>NS</u>	<u>PE</u>	<u>NB</u>	<u>QC</u>	<u>ON</u>	<u>MB</u>	<u>SK</u>	<u>AB</u>	<u>BC</u>	<u>NT</u>	<u>YK</u>
ND	yes	yes	yes	yes	yes	yes	ND	yes	yes	ND	no
					23.11.01		knowledge of plumbing systems associated with ice makers				

Supporting Knowledge & Abilities

- 23.11.02 knowledge of AC systems
- 23.11.03 knowledge of ice maker operation and system components
- 23.11.04 knowledge of repair procedures
- 23.11.05 ability to replace mould heater
- 23.11.06 ability to replace water valves
- 23.11.07 ability to replace electric motor and fan motor
- 23.11.08 ability to replace gears
- 23.11.09 ability to replace ice mould assembly
- 23.11.10 ability to replace ejector arms
- 23.11.11 ability to replace shutoff arms
- 23.11.12 ability to replace on/off switch
- 23.11.13 ability to replace wire harnesses and connectors

APPENDICES

TOOLS AND EQUIPMENT

Measuring and Test Equipment

air flow meter	measuring tape
ammeter (with induction pickup)	micrometer
calculators	multimeter
carbon-battery load tester	oven temperature tester
circuit board tester	plumb line
DC test light	scale
dial indicator	square
digital multimeter	test light
flashlight	thermometer,
hydrometer	voltmeter
leak detectors (liquid and electronic)	volt/ohmeter
level	weigh scale
manometer	

Automotive Tools

air inflator	filter wrench
alternator tester	floor jack
anchor spring tool	hoist
battery charger	hydraulic tester
battery starter	jack stands
bearing packer	tire pressure gauge
bearing puller	tread depth gauge
brake adjustment tools	tree valve stem tool
brake spring pliers	valve installer tool

Hand Tools

Basic:	
battery carrying strap	pliers
brushes	pop riveter
caulking gun	pry bar
centre punch	rubber mallet
date stamp equipment	sand paper
easy outs	screw drivers
hack saw	snap fastener tools
hammers	socket set
hand drills	stapler
hand saw	thread taps
heat gun	torque wrench
hole punch	utility knife
jumper leads	vice grips
nut driver	wire brush
plastic rod	wrenches

LP:

butane igniter
 flaring tools
 flue cleaner

pipe seamer
 tube bender
 tube cutter

Plumbing:

basin wrench
 blowout plug
 drain bucket and funnel
 faucet wrench
 gluing equipment
 PEX crimper
 pipe bender

pipe cutter
 pipe wrenches
 propane torch
 snakes
 spin weld driver
 toilet wand
 tube cutter

Electrical:

cable crimpers
 channel locks
 channel lock pliers
 coaxial crimper
 generator
 inverters

soldering gun/iron
 wire connectors
 wire crimping tools
 wire cutters
 wire strippers

Portable Power Tools and Stationary Tools

air chisel
 air compressor
 air nailer
 air nozzle
 air stapler
 angle grinder
 brake cleaners
 caustic baths
 circular saw
 drill bits
 electric drill
 gas welders
 hole saws
 impact wrench

jig saw
 mitre saw
 power washers
 reciprocating saws
 sander/grinder
 sawsall
 saw blades
 screw gun
 shielded metal arc welders
 solvent baths
 stapler
 table saw
 wet/dry vacuum

Interior Construction Tools

carpet stretcher
 caulking gun
 cleaning materials
 flooring adhesive spreader
 glass cutters
 ladder
 paint brushes

router
 router bits
 screening tool
 tile cutter
 tin snips
 trowel
 wood clamps

BLOCKS AND TASKS WEIGHTING**BLOCK A FUNDAMENTAL OCCUPATIONAL SKILLS**

	<u>NF</u>	<u>NS</u>	<u>PE</u>	<u>NB</u>	<u>QC</u>	<u>ON</u>	<u>MB</u>	<u>SK</u>	<u>AB</u>	<u>BC</u>	<u>NT</u>	<u>YK</u>	National Average
%	ND	6	5	11	10	10	10	ND	5	5	ND	5	7 %

Task 1 Demonstrates safe work practices.

	<u>NF</u>	<u>NS</u>	<u>PE</u>	<u>NB</u>	<u>QC</u>	<u>ON</u>	<u>MB</u>	<u>SK</u>	<u>AB</u>	<u>BC</u>	<u>NT</u>	<u>YK</u>	
%	ND	20	20	20	10	18	25	ND	20	30	ND	15	20 %

Task 2 Utilizes drawings, codes, standards and service manuals.

	<u>NF</u>	<u>NS</u>	<u>PE</u>	<u>NB</u>	<u>QC</u>	<u>ON</u>	<u>MB</u>	<u>SK</u>	<u>AB</u>	<u>BC</u>	<u>NT</u>	<u>YK</u>	
%	ND	15	15	20	10	20	15	ND	35	30	ND	20	20 %

Task 3 Utilizes tools and measuring equipment.

	<u>NF</u>	<u>NS</u>	<u>PE</u>	<u>NB</u>	<u>QC</u>	<u>ON</u>	<u>MB</u>	<u>SK</u>	<u>AB</u>	<u>BC</u>	<u>NT</u>	<u>YK</u>	
%	ND	24	20	21	40	21	25	ND	20	30	ND	20	25 %

Task 4 Demonstrates common work practices and procedures.

	<u>NF</u>	<u>NS</u>	<u>PE</u>	<u>NB</u>	<u>QC</u>	<u>ON</u>	<u>MB</u>	<u>SK</u>	<u>AB</u>	<u>BC</u>	<u>NT</u>	<u>YK</u>	
%	ND	20	20	22	20	23	20	ND	20	5	ND	25	19 %

Task 5 Provides customer service.

	<u>NF</u>	<u>NS</u>	<u>PE</u>	<u>NB</u>	<u>QC</u>	<u>ON</u>	<u>MB</u>	<u>SK</u>	<u>AB</u>	<u>BC</u>	<u>NT</u>	<u>YK</u>	
%	ND	21	25	17	20	18	15	ND	5	5	ND	20	16 %

BLOCK B PLUMBING SYSTEMS

													National Average
%	<u>NF</u>	<u>NS</u>	<u>PE</u>	<u>NB</u>	<u>QC</u>	<u>ON</u>	<u>MB</u>	<u>SK</u>	<u>AB</u>	<u>BC</u>	<u>NT</u>	<u>YK</u>	
	ND	10	15	8	5	12	10	ND	10	15	ND	15	11 %

Task 6 Maintains potable water systems.

	<u>NF</u>	<u>NS</u>	<u>PE</u>	<u>NB</u>	<u>QC</u>	<u>ON</u>	<u>MB</u>	<u>SK</u>	<u>AB</u>	<u>BC</u>	<u>NT</u>	<u>YK</u>	
%	ND	50	60	50	60	57	50	ND	50	60	ND	40	53 %

Task 7 Maintains waste water systems.

	<u>NF</u>	<u>NS</u>	<u>PE</u>	<u>NB</u>	<u>QC</u>	<u>ON</u>	<u>MB</u>	<u>SK</u>	<u>AB</u>	<u>BC</u>	<u>NT</u>	<u>YK</u>	
%	ND	50	40	50	40	43	50	ND	50	40	ND	60	47 %

BLOCK C ELECTRICAL

													National Average
%	<u>NF</u>	<u>NS</u>	<u>PE</u>	<u>NB</u>	<u>QC</u>	<u>ON</u>	<u>MB</u>	<u>SK</u>	<u>AB</u>	<u>BC</u>	<u>NT</u>	<u>YK</u>	
	ND	14	15	15	20	11	20	ND	19	17	ND	20	17 %

Task 8 Maintains AC electrical system.

	<u>NF</u>	<u>NS</u>	<u>PE</u>	<u>NB</u>	<u>QC</u>	<u>ON</u>	<u>MB</u>	<u>SK</u>	<u>AB</u>	<u>BC</u>	<u>NT</u>	<u>YK</u>	
%	ND	40	45	40	40	27	35	ND	40	40	ND	40	39 %

Task 9 Maintains DC electrical systems.

	<u>NF</u>	<u>NS</u>	<u>PE</u>	<u>NB</u>	<u>QC</u>	<u>ON</u>	<u>MB</u>	<u>SK</u>	<u>AB</u>	<u>BC</u>	<u>NT</u>	<u>YK</u>	
%	ND	60	55	60	60	73	65	ND	60	60	ND	60	61 %

BLOCK D LP GAS

													National Average
%	<u>NF</u>	<u>NS</u>	<u>PE</u>	<u>NB</u>	<u>QC</u>	<u>ON</u>	<u>MB</u>	<u>SK</u>	<u>AB</u>	<u>BC</u>	<u>NT</u>	<u>YK</u>	15 %
	ND	20	10	16	15	11	20	ND	19	20	ND	5	

Task 10 Maintains high pressure LP gas system.

	<u>NF</u>	<u>NS</u>	<u>PE</u>	<u>NB</u>	<u>QC</u>	<u>ON</u>	<u>MB</u>	<u>SK</u>	<u>AB</u>	<u>BC</u>	<u>NT</u>	<u>YK</u>	
%	ND	38	65	23	20	18	25	ND	25	30	ND	40	32 %

Task 11 Maintains low pressure LP gas systems.

	<u>NF</u>	<u>NS</u>	<u>PE</u>	<u>NB</u>	<u>QC</u>	<u>ON</u>	<u>MB</u>	<u>SK</u>	<u>AB</u>	<u>BC</u>	<u>NT</u>	<u>YK</u>	
%	ND	62	35	77	80	82	75	ND	75	70	ND	60	68 %

BLOCK E APPLIANCES

													National Average
%	<u>NF</u>	<u>NS</u>	<u>PE</u>	<u>NB</u>	<u>QC</u>	<u>ON</u>	<u>MB</u>	<u>SK</u>	<u>AB</u>	<u>BC</u>	<u>NT</u>	<u>YK</u>	19 %
	ND	20	10	14	35	17	15	ND	20	15	ND	20	

Task 12 Maintains furnaces and associated systems.

	<u>NF</u>	<u>NS</u>	<u>PE</u>	<u>NB</u>	<u>QC</u>	<u>ON</u>	<u>MB</u>	<u>SK</u>	<u>AB</u>	<u>BC</u>	<u>NT</u>	<u>YK</u>	
%	ND	25	30	23	30	24	30	ND	40	30	ND	25	29 %

Task 13 Maintains water heaters.

	<u>NF</u>	<u>NS</u>	<u>PE</u>	<u>NB</u>	<u>QC</u>	<u>ON</u>	<u>MB</u>	<u>SK</u>	<u>AB</u>	<u>BC</u>	<u>NT</u>	<u>YK</u>	
%	ND	20	25	19	20	24	15	ND	10	25	ND	20	20 %

Task 14 Maintains ranges and ovens.

	<u>NF</u>	<u>NS</u>	<u>PE</u>	<u>NB</u>	<u>QC</u>	<u>ON</u>	<u>MB</u>	<u>SK</u>	<u>AB</u>	<u>BC</u>	<u>NT</u>	<u>YK</u>	
%	ND	18	15	10	5	20	15	ND	5	10	ND	20	13 %

Task 15 Maintains refrigeration systems.

	<u>NF</u>	<u>NS</u>	<u>PE</u>	<u>NB</u>	<u>QC</u>	<u>ON</u>	<u>MB</u>	<u>SK</u>	<u>AB</u>	<u>BC</u>	<u>NT</u>	<u>YK</u>	
%	ND	25	20	28	30	24	30	ND	40	30	ND	25	28 %

Task 16 Maintains air conditioning and heat pump systems.

	<u>NF</u>	<u>NS</u>	<u>PE</u>	<u>NB</u>	<u>QC</u>	<u>ON</u>	<u>MB</u>	<u>SK</u>	<u>AB</u>	<u>BC</u>	<u>NT</u>	<u>YK</u>	
%	ND	12	10	20	15	8	10	ND	5	5	ND	10	11 %

BLOCK F INTERIOR COMPONENTS AND EXTERIOR SHELL

	<u>NF</u>	<u>NS</u>	<u>PE</u>	<u>NB</u>	<u>QC</u>	<u>ON</u>	<u>MB</u>	<u>SK</u>	<u>AB</u>	<u>BC</u>	<u>NT</u>	<u>YK</u>	National Average
%	ND	10	15	11	5	20	10	ND	12	15	ND	10	12 %

Task 17 Maintains interior components.

	<u>NF</u>	<u>NS</u>	<u>PE</u>	<u>NB</u>	<u>QC</u>	<u>ON</u>	<u>MB</u>	<u>SK</u>	<u>AB</u>	<u>BC</u>	<u>NT</u>	<u>YK</u>	
%	ND	45	60	43	55	55	30	ND	50	35	ND	50	47 %

Task 18 Maintains exterior components.

	<u>NF</u>	<u>NS</u>	<u>PE</u>	<u>NB</u>	<u>QC</u>	<u>ON</u>	<u>MB</u>	<u>SK</u>	<u>AB</u>	<u>BC</u>	<u>NT</u>	<u>YK</u>	
%	ND	55	40	57	45	45	70	ND	50	65	ND	50	53 %

BLOCK G TOWING AND CHASSIS COMPONENTS

												National Average	
%	<u>NF</u>	<u>NS</u>	<u>PE</u>	<u>NB</u>	<u>QC</u>	<u>ON</u>	<u>MB</u>	<u>SK</u>	<u>AB</u>	<u>BC</u>	<u>NT</u>	<u>YK</u>	
	ND	13	20	17	5	7	10	ND	10	10	ND	15	12 %

Task 19 Maintains undercarriage components on towed vehicles.

	<u>NF</u>	<u>NS</u>	<u>PE</u>	<u>NB</u>	<u>QC</u>	<u>ON</u>	<u>MB</u>	<u>SK</u>	<u>AB</u>	<u>BC</u>	<u>NT</u>	<u>YK</u>	
%	ND	31	50	31	40	20	20	ND	50	35	ND	30	34 %

Task 20 Maintains braking systems.

	<u>NF</u>	<u>NS</u>	<u>PE</u>	<u>NB</u>	<u>QC</u>	<u>ON</u>	<u>MB</u>	<u>SK</u>	<u>AB</u>	<u>BC</u>	<u>NT</u>	<u>YK</u>	
%	ND	34	30	33	40	15	40	ND	25	50	ND	40	34 %

Task 21 Maintains hitching system.

	<u>NF</u>	<u>NS</u>	<u>PE</u>	<u>NB</u>	<u>QC</u>	<u>ON</u>	<u>MB</u>	<u>SK</u>	<u>AB</u>	<u>BC</u>	<u>NT</u>	<u>YK</u>	
%	ND	35	20	36	20	65	40	ND	25	15	ND	30	32 %

BLOCK H ACCESSORIES

												National Average	
%	<u>NF</u>	<u>NS</u>	<u>PE</u>	<u>NB</u>	<u>QC</u>	<u>ON</u>	<u>MB</u>	<u>SK</u>	<u>AB</u>	<u>BC</u>	<u>NT</u>	<u>YK</u>	
	ND	7	10	8	5	12	5	ND	5	3	ND	10	7 %

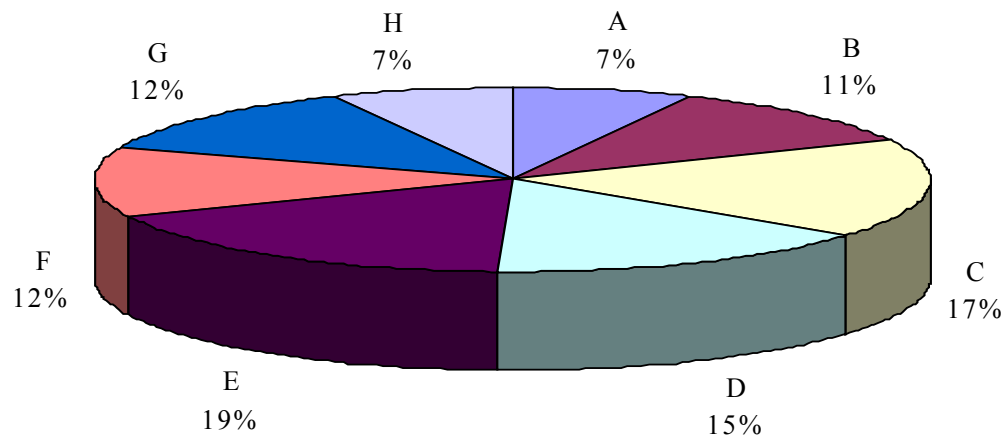
Task 22 Performs accessories/system installations.

	<u>NF</u>	<u>NS</u>	<u>PE</u>	<u>NB</u>	<u>QC</u>	<u>ON</u>	<u>MB</u>	<u>SK</u>	<u>AB</u>	<u>BC</u>	<u>NT</u>	<u>YK</u>	
%	ND	58	60	58	40	67	40	ND	80	35	ND	50	54 %

Task 23 Maintains accessories/systems.

	<u>NF</u>	<u>NS</u>	<u>PE</u>	<u>NB</u>	<u>QC</u>	<u>ON</u>	<u>MB</u>	<u>SK</u>	<u>AB</u>	<u>BC</u>	<u>NT</u>	<u>YK</u>	
%	ND	42	40	42	60	33	60	ND	20	65	ND	50	46 %

PIE CHART*
Recreation Vehicle Mechanic



TITLES OF BLOCKS

Block A	Fundamental Occupational Skills	Block E	Appliances
Block B	Plumbing Systems	Block F	Interior Components and Exterior Shell
Block C	Electrical	Block G	Towing and Chassis Components
Block D	LP Gas	Block H	Accessories

* The average percentage of the total number of questions on an interprovincial examination, assigned to assess each block of the analysis, as derived from the collective input from workers within the occupation from all areas of Canada. Interprovincial examinations typically have from one hundred up to one hundred and fifty multiple choice questions on each examination.

RECREATION VEHICLE MECHANIC (1999)

BLOCKS	TASKS	SUB-TASKS							
A Fundamental Occupational Skills	1. Demonstrates safe work practices.	1.01 Complies with government and occupational health and safety regulations and procedures.	1.02 Utilizes personal protective equipment.	1.03 Maintains work area.					
	2. Utilizes drawings, codes, standards and service manuals.	2.01 Interprets blueprints, drawings and schematics.	2.02 Interprets codes, trade standards and government regulations.	2.03 Interprets service literature.					
	3. Utilizes tools and measuring equipment.	3.01 Uses hand tools.	3.02 Operates portable power tools.	3.03 Operates stationary power tools and lifting equipment.	3.04 Operates measuring equipment.	3.05 Operates test equipment.			
	4. Demonstrates common work practices and procedures.	4.01 Installs tubing, piping, hoses and fittings.	4.02 Installs wiring and connectors.	4.03 Applies fasteners, sealants, adhesives and gaskets.	4.04 Performs trade related welding operations. *	4.05 Performs plastic welding operations.	4.06 Cleans parts and components.	4.07 Prepares sketches.	4.08 Performs recreational vehicle preventative maintenance.
	5. Provides customer service.	5.01 Develops customer relations.	5.02 Maintains service records.						
B Plumbing Systems	6. Maintains potable water systems.	6.01 Replaces storage tanks and components.	6.02 Repairs storage tanks and components.	6.03 Repairs distribution system.	6.04 Replaces distribution parts.	6.05 Repairs plumbing fixtures.	6.06 Replaces plumbing fixtures.	6.07 Winterizes potable systems.	6.08 Tests potable water systems.

*NOT COMMON CORE

RECREATION VEHICLE MECHANIC (1999)

BLOCKS	TASKS	SCB-TASKS												
	7. Maintains waste water systems.	<table border="1"> <tr> <td>7.01 Repairs waste holding tanks and components.</td> <td>7.02 Repairs collection system.</td> <td>7.03 Tests waste water systems.</td> </tr> <tr> <td></td> <td></td> <td></td> </tr> </table>	7.01 Repairs waste holding tanks and components.	7.02 Repairs collection system.	7.03 Tests waste water systems.									
7.01 Repairs waste holding tanks and components.	7.02 Repairs collection system.	7.03 Tests waste water systems.												
C	Electrical	<table border="1"> <tr> <td>8.01 Replaces AC power cords and connectors.</td> <td>8.02 Repairs generator set.</td> <td>8.03 Services generator set.</td> <td>8.04 Repairs AC distribution system.</td> <td>8.05 Tests AC electrical systems.</td> </tr> <tr> <td></td> <td></td> <td></td> <td></td> <td></td> </tr> </table>	8.01 Replaces AC power cords and connectors.	8.02 Repairs generator set.	8.03 Services generator set.	8.04 Repairs AC distribution system.	8.05 Tests AC electrical systems.							
8.01 Replaces AC power cords and connectors.	8.02 Repairs generator set.	8.03 Services generator set.	8.04 Repairs AC distribution system.	8.05 Tests AC electrical systems.										
	9. Maintains DC electrical systems.	<table border="1"> <tr> <td>9.01 Services batteries.</td> <td>9.02 Repairs converters.</td> <td>9.03 Repairs DC distribution systems.</td> <td>9.04 Repairs monitoring systems.</td> <td>9.05 Tests DC electrical systems.</td> <td>9.06 Checks inverters and solar panels.</td> </tr> <tr> <td></td> <td></td> <td></td> <td></td> <td></td> <td></td> </tr> </table>	9.01 Services batteries.	9.02 Repairs converters.	9.03 Repairs DC distribution systems.	9.04 Repairs monitoring systems.	9.05 Tests DC electrical systems.	9.06 Checks inverters and solar panels.						
9.01 Services batteries.	9.02 Repairs converters.	9.03 Repairs DC distribution systems.	9.04 Repairs monitoring systems.	9.05 Tests DC electrical systems.	9.06 Checks inverters and solar panels.									
D	LP Gas	<table border="1"> <tr> <td>10.01 Inspects high pressure LP system containers, piping and valves.</td> <td>10.02 Replaces high pressure LP gas system components.</td> <td>10.03 Services high pressure LP gas systems.</td> <td>10.04 Recertifies high pressure LP containers. *</td> </tr> <tr> <td></td> <td></td> <td></td> <td></td> </tr> </table>	10.01 Inspects high pressure LP system containers, piping and valves.	10.02 Replaces high pressure LP gas system components.	10.03 Services high pressure LP gas systems.	10.04 Recertifies high pressure LP containers. *								
10.01 Inspects high pressure LP system containers, piping and valves.	10.02 Replaces high pressure LP gas system components.	10.03 Services high pressure LP gas systems.	10.04 Recertifies high pressure LP containers. *											
	11. Maintains low pressure LP gas systems.	<table border="1"> <tr> <td>11.01 Replaces low pressure LP system components.</td> <td>11.02 Services low pressure LP systems.</td> </tr> <tr> <td></td> <td></td> </tr> </table>	11.01 Replaces low pressure LP system components.	11.02 Services low pressure LP systems.										
11.01 Replaces low pressure LP system components.	11.02 Services low pressure LP systems.													
E	Appliances	<table border="1"> <tr> <td>12.01 Diagnoses furnace faults.</td> <td>12.02 Replaces furnace components and ducting.</td> <td>12.03 Replaces furnaces.</td> <td>12.04 Services furnaces, components, ducting and return air.</td> </tr> <tr> <td></td> <td></td> <td></td> <td></td> </tr> </table>	12.01 Diagnoses furnace faults.	12.02 Replaces furnace components and ducting.	12.03 Replaces furnaces.	12.04 Services furnaces, components, ducting and return air.								
12.01 Diagnoses furnace faults.	12.02 Replaces furnace components and ducting.	12.03 Replaces furnaces.	12.04 Services furnaces, components, ducting and return air.											

RECREATION VEHICLE MECHANIC (1999)

BLOCKS

TASKS

← SUB-TASKS →

13. Maintains water heaters.	13.01 Diagnoses water heater faults.	13.02 Replaces water heater components.	13.03 Replaces water heater.	13.04 Services water heater and components.
	□	□	□	□

14. Maintains ranges and ovens.	14.01 Diagnoses ranges/ovens faults.	14.02 Replaces ranges/ovens and components.	14.03 Services ranges/ovens and components.
	□	□	□

15. Maintains refrigeration systems.	15.01 Diagnoses refrigeration faults.	15.02 Replaces refrigerator components.	15.03 Replaces refrigerators.	15.04 Services refrigerators, components and venting.
	□	□	□	□

16. Maintains air conditioning and heat pump systems.	16.01 Diagnoses air conditioning and heat pump faults.	16.02 Replaces air conditioning and heat pump electro-mechanical components.	16.03 Replaces air conditioning and heat pump systems.	16.04 Services air conditioner and heat pump systems and ducting.
	□	□	□	□

F
Interior Components and Exterior Shell

17. Maintains interior components.	17.01 Inspects interior components.	17.02 Replaces sidewalls and ceiling surfaces.	17.03 Replaces flooring and floor coverings.	17.04 Replaces soft goods.	17.05 Repairs cabinetry.	17.06 Replaces interior accessories.
	□	□	□	□	□	□

18. Maintains exterior components.	18.01 Inspects exterior components.	18.02 Replaces roofing.	18.03 Replaces sidewalls.	18.04 Repairs underbelly.	18.05 Repairs exterior openings.	18.06 Repairs roof lifting systems.	18.07 Repairs slide-out systems.
	□	□	□	□	□	□	□

RECREATION VEHICLE MECHANIC (1999)

BLOCKS	TASKS	SCB-TASKS																								
G	Towing and Chassis Components	19. Maintains undercarriage components on towed vehicles.	19.01 Services wheel and tires (towed).	19.02 Repairs axles, hubs and bearings.	19.03 Replaces suspension systems.	19.04 Inspects frame.	19.05 Repairs tongue jacks and landing gear.																			
		20. Maintains braking systems.	20.01 Repairs electric braking components.	20.02 Repairs hydraulic braking system.																						
		21. Maintains hitching system.	21.01 Replaces mechanical towing components.	21.02 Installs towing components.																						
H	Accessories	22. Performs accessories/system installations.	22.01 Installs/replaces plumbing accessories.	22.02 Installs/replaces entertainment and communication systems.	22.03 Installs/replaces small electrical household appliances.	22.04 Installs/replaces safety and security systems.	22.05 Installs/replaces storage and access systems.	22.06 Installs/replaces power supply systems.	22.07 Installs/replaces LP accessories.	22.08 Installs/replaces leveling, stabilizing and jacking systems.	22.09 Installs/replaces auxiliary chassis and towing components (suspension aids).	22.10 Installs/replaces awning, skirting and add-a-rooms.	22.11 Installs/replaces range hoods.	22.12 Installs/replaces ice makers.												
		23. Maintains accessories/systems.	23.01 Repairs plumbing accessories.	23.02 Repairs entertainment and communication systems.	23.03 Repairs small electrical household appliances.	23.04 Services safety and security systems.	23.05 Repairs storage and access systems.	23.06 Repairs power supply systems.	23.07 Repairs LP accessories.	23.08 Repairs leveling, stabilizing and jacking systems.	23.09 Repairs awning, skirting and add-a-room.	23.10 Repairs range hood	23.11 Repairs ice makers.													