



Transport
Canada

Transports
Canada

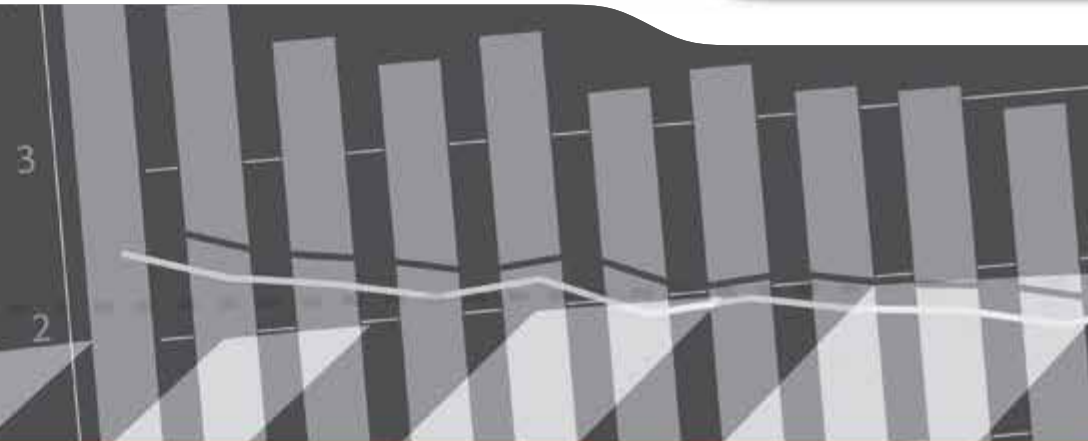


Canadian Motor Vehicle Traffic

Collision Statistics

2012

Collected in cooperation with the Canadian Council
of Motor Transport Administrators



© Her Majesty the Queen in Right of Canada, represented by the Minister of Transport, 2014.

Cette publication est aussi disponible en français sous le titre Statistiques sur les collisions de la route au Canada 2012.

Catalogue No.: T45-3/2010E-PDF
ISBN: 1701-6223

To request permission to reproduce materials from this publication for commercial purposes, please complete the following web form: www.tc.gc.ca/eng/crown-copyright-request-614.html

Or contact: TCcopyright-droitdauteurTC@tc.gc.ca

To find out more about national road safety programs or initiatives, call Transport Canada toll free at 1-800-333-0371 or e-mail us at mvs-sa@tc.gc.ca. You can also visit our web site at www.tc.gc.ca/motor-vehicle-safety or the Canadian Council of Motor Transport Administrators' web site at www.ccmta.ca.

More detailed motor vehicle collision data can be queried using the National Collision Database (NCDB) On-Line tool located at www.tc.gc.ca/VehicleCollisions.

INTRODUCTION

Transport Canada's National Collision Database (NCDB) contains data on all reportable motor vehicle collisions in Canada that the provinces and territories provide each year.

The federal, provincial and territorial governments in Canada work to improve road safety to reduce the number of fatalities and serious injuries and to have the safest roads in the world. The year 2012 saw an increase in the number of fatalities compared to 2011, however the downward trend continued for serious injuries and total injuries. Despite the increase in fatalities compared to the previous year, 2012 observed the 2nd lowest fatality count since the data were first collected by Transport Canada in the early 1970's.

- **In 2012, the number of motor vehicle fatalities was 2,077; up 2.7% from 2011 (2,023).**
- **The downward trend for serious injuries continued, dropping to 10,655 in 2012; down 1.3% from 2011 (10,794).**
- **The rate of the number of fatalities per 100,000 population was 6.0 in 2012, up from 5.8 in 2011.**
- **2012 marked the second consecutive year that the fatality rate per 10,000 registered vehicles (of 0.93) was below 1.0.**



COLLISIONS AND CASUALTIES 1993-2012

YEAR	COLLISIONS		VICTIMS		
	FATAL ¹	PERSONAL INJURY ²	FATALITIES ³	SERIOUS INJURIES ⁴	INJURIES ⁵ (TOTAL)
1993	3,122 ^r	168,036 ^r	3,615	23,902	247,593
1994	2,837	164,635 ^r	3,230	21,564	241,899
1995	2,818 ^r	162,014 ^r	3,313	20,188	238,458
1996	2,740	153,944	3,129	18,734	227,283
1997	2,660	147,549	3,076	17,294	217,401
1998	2,583	145,615	2,919	16,410 ^r	213,319
1999	2,632	148,683	2,980	16,187	218,457
2000	2,548 ^r	153,290 ^r	2,904 ^r	15,581	222,848 ^r
2001	2,415 ^r	149,023 ^r	2,758 ^r	15,296 ^r	216,542 ^r
2002	2,583	153,832 ^r	2,921	15,894 ^r	222,665 ^r
2003	2,487	150,493 ^r	2,777	15,110 ^r	216,123 ^r
2004	2,438 ^r	145,150 ^r	2,735 ^r	15,572 ^r	206,104 ^r
2005	2,551 ^r	145,559 ^r	2,898	15,792 ^r	204,701 ^r
2006	2,586 ^r	142,517 ^r	2,871 ^r	15,879 ^r	199,976 ^r
2007	2,455 ^r	138,615 ^r	2,753	14,216 ^r	192,745 ^r
2008	2,197 ^r	127,672 ^r	2,431 ^r	12,674 ^r	176,512 ^r
2009	2,014 ^r	123,561 ^r	2,216 ^r	11,780 ^r	170,912 ^r
2010	2,020 ^r	123,628 ^r	2,238 ^r	11,625 ^r	172,100 ^r
2011	1,837 ^r	121,159	2,023 ^r	10,794 ^r	166,725
2012	1,823	122,140	2,077	10,656	165,172

1. "Fatal collisions" include all reported motor vehicle crashes that resulted in at least one death, where death occurred within 30 days of the collision, except in Quebec before 2007 (eight days).
2. "Personal injury collisions" include all reported motor vehicle crashes which resulted in at least one injury but not death within 30 days of the collision, except in Quebec before 2007 (eight days).
3. "Fatalities" include all those who died as a result of a reported traffic collision within 30 days of its occurrence, except in Quebec before 2007 (eight days).
4. "Serious Injuries" include persons admitted to hospital for treatment or observation. Serious injuries were estimated from 1993 to 2012 because several jurisdictions under-reported these numbers.
5. "Total Injuries" include all reported severities of injuries ranging from minimal to serious.

^r Revised.

FATALITIES AND INJURIES BY AGE GROUP 2012

AGE GROUP (YRS)	FATALITIES	SERIOUS INJURIES	INJURIES (TOTAL)
0-4	17	109	2,132
5-14	47	347	6,738
15-19	214	1,102	16,721
20-24	270	1,402	20,342
25-34	309	1,867	30,437
35-44	251	1,475	25,048
45-54	321	1,679	26,089
55-64	230	1,193	17,874
65 +	395	1,239	15,728
NOT STATED	23	243	4,063
TOTAL	2,077	10,656	165,172

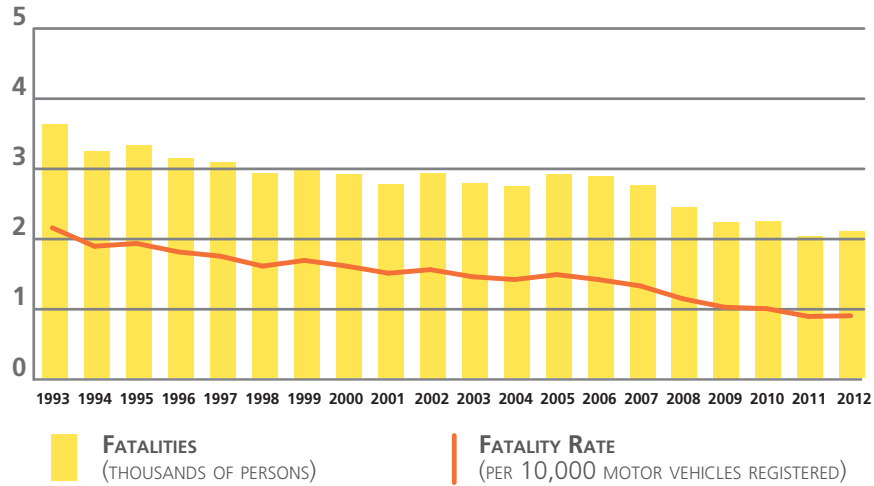
FATALITIES BY ROAD USER CLASS 2008-2012

ROAD USER CLASS	2008	2009	2010	2011	2012
# DRIVERS	1,293 ^r	1,155 ^r	1,131 ^r	1,022 ^r	1,052
% DRIVERS	53.2 ^r	52.1	50.5 ^r	50.5 ^r	50.6
# PASSENGERS	502 ^r	444 ^r	491	398 ^r	437
% PASSENGERS	20.6	20.1	21.9	19.7 ^r	21.0
# PEDESTRIANS	309 ^r	316	306 ^r	321 ^r	312
% PEDESTRIANS	12.7 ^r	14.2	13.7 ^r	15.9 ^r	15.0
# BICYCLISTS	44	45	62	57 ^r	61
% BICYCLISTS	1.8	2.0	2.8	2.8 ^r	2.9
# MOTORCYCLISTS*	226 ^r	198 ^r	193 ^r	173 ^r	175
% MOTORCYCLISTS	9.3 ^r	8.9 ^r	8.6	8.6 ^r	8.4
# NOT STATED/OTHER	57 ^r	58	55	52 ^r	40
% NOT STATED/OTHER	2.3 ^r	2.6	2.5	2.6 ^r	1.9
# TOTAL	2,431 ^r	2,216 ^r	2,238 ^r	2,023 ^r	2,077
% TOTAL	100.0	100.0	100.0	100.0	100.0

* Includes moped riders.

^r Revised.

FATALITIES 1993-2012



CASUALTY RATES 2012

	PER 100,000 POPULATION ¹		PER BILLION VEHICLE-KILOMETRES ²		PER 100,000 LICENSED DRIVERS	
	FATALITIES	INJURIES	FATALITIES	INJURIES	FATALITIES	INJURIES
CANADA	6.0	475.3	6.0	480.5	8.6	684.0
N.L.	5.3	392.1	5.9	433.7	7.7	567.1
P.E.I.	7.6	438.8	7.6	439.8	10.7	619.0
N.S.	8.8	492.8	7.7	434.1	12.0	672.3
N.B.	8.6	375.4	8.0	351.8	11.7	512.8
QUE.	5.2	483.3	5.9	545.2	8.1	752.1
ONT.	4.2	442.3	4.3	459.9	5.9	625.7
MAN.	7.7	842.1	7.3	805.5	11.4	1,255.5
SASK.	16.8	664.9	13.9	548.2	24.0	948.9
ALTA.	8.9	468.5	6.4	340.1	11.9	630.9
B.C.	6.2	444.5	7.6	543.3	8.8	629.1
Y.T.	5.5	549.0	3.2	318.3	7.2	719.5
N.W.T.	4.6	334.7	5.2	378.9	8.1	590.0
NVT.	2.9	167.1	26.5	1,538.1	16.6	964.6

1. Statistics Canada, Annual Demographic Estimates: Canada, Provinces and Territories, 2013, Catalogue No. 91-215-X.
2. Statistics Canada, 'Canadian Vehicle Survey', Catalogue No. 53-223-XIE.

Notes: Vehicle KMs Data were not available for 2012 so they were estimated using average yearly change for the years 2009-2011.

Data for Ontario are preliminary for 2012. Data for Newfoundland and New Brunswick were estimated.

Recent changes in how traffic accident reports are collected in Manitoba resulted in an increased number of injuries of a minimal nature being captured in 2012.

PERCENTAGE OF DRIVER AND PASSENGER FATALITIES AND SERIOUS INJURIES BY AGE GROUP 2012

AGE GROUP (YRS)	FATALITIES		SERIOUS INJURIES	
	DRIVERS	PASSENGERS	DRIVERS	PASSENGERS
0-4	0.0	2.5	0.0	3.6
5-14	0.0	7.0	0.2	7.7
15-19	7.5	17.9	8.5	15.3
20-24	13.3	15.0	13.5	15.6
25-34	17.2	13.0	20.1	14.8
35-44	13.9	8.5	15.7	10.9
45-54	17.0	11.9	17.9	9.1
55-64	11.6	7.8	12.0	7.7
65 +	19.0	15.5	11.9	10.7
NOT STATED	0.5	0.9	0.2	4.7
TOTAL	100.0	100.0	100.0	100.0

NUMBER OF LICENSED DRIVERS BY GENDER AND BY AGE 2012

AGE GROUP (YRS)	MALES	FEMALES	TOTAL
<16	30,957	24,963	55,920
16-19	574,559	517,587	1,092,146
20-24	985,957	912,221	1,898,178
25-34	2,101,494	2,025,165	4,126,659
35-44	2,172,027	2,096,490	4,268,517
45-54	2,506,864	2,379,657	4,886,521
55-64	2,096,321	1,962,577	4,058,898
65 +	2,012,492	1,747,543	3,760,035
NOT STATED	0	1	1
TOTAL	12,480,671	11,666,204	24,146,875

LICENSED DRIVERS AND MOTOR VEHICLE REGISTRATIONS BY TYPE OF VEHICLE (IN THOUSANDS) 1993-2012

	LICENSED DRIVERS ¹	LIGHT-DUTY VEHICLES ²	COMMERCIAL VEHICLES ³	MOTOR-CYCLES ⁴
1993	18,843	12,925	3,455	337
1994	19,243	13,131	3,510	330
1995	19,327	13,192	3,535	320
1996	19,964	13,251	3,620	312
1997	20,148	13,515	3,684	319
1998	20,744	13,887	3,767	334
1999	20,934	16,538	722	274
2000	20,593	16,832	739	311
2001	20,879	17,055	729	318
2002	21,163	17,543	724	350
2003	21,436	17,755	740	373
2004	21,673	17,920	752	409
2005	21,937	18,124	786	443
2006	22,278	18,739	841	485
2007	22,606	19,199	872	522
2008	22,972	19,613	907	567
2009	23,198	19,877	915	595
2010	23,541	20,268'	964'	616'
2011	23,831	20,608'	1,008'	631'
2012	24,147	20,652	1,053	661

1. Excludes temporary permits prior to 1999.
2. Pre-1999, these registrations include passenger automobiles. From 1999, light-duty vehicles include passenger type vehicles (automobiles, passenger vans), light trucks and vans (less than 4 500 kg).
3. Pre-1999, these registrations include trucks, buses and other commercial vehicles, such as vans. From 1999, these registrations include commercial vehicles (trucks and buses) greater than 4 500 kg.
4. Includes mopeds.

Source: 1993 to 1998: Statistics Canada, Catalogue No. 53-219, "Road Motor Vehicles - Registrations". From 1999, the motor vehicle registration data are from Statistics Canada, CANSIM, Table 405-0004. From 1999 the licensed driver data were provided by each jurisdiction.

Notes: A reduced level of police reporting in British Columbia in years 1996 through 2004 has affected the British Columbia totals and, to a lesser extent, national totals reported in this publication.



PERCENTAGE OF DRIVER AND PASSENGER FATALITIES AND SERIOUS INJURIES WHERE VICTIMS WERE NOT USING SEAT BELTS 2008-2012

	2008	2009	2010	2011	2012
DRIVERS					
FATALITIES	34.9	33.6	34.0	31.4	31.8
SERIOUS INJURIES	15.6	14.5	12.9	12.9	12.6

	2008	2009	2010	2011	2012
PASSENGERS					
FATALITIES	38.3	36.3	40.4	34.1	36.6
SERIOUS INJURIES	21.6	23.3	20.5	20.9	20.0

Note: "Serious Injuries" include victims admitted to hospital for treatment or observation.

PERCENTAGE OF FATALITIES AND SERIOUS INJURIES BY ROAD USER CLASS 2012

ROAD USER CLASS	FATALITIES	SERIOUS INJURIES
DRIVERS	50.6	46.9
PASSENGERS	21.0	20.5
PEDESTRIANS	15.0	14.4
BICYCLISTS	2.9	4.3
MOTORCYCLISTS*	8.4	11.7
NOT STATED/OTHER	1.9	2.2
TOTAL	100.0	100.0

* Includes moped riders.

NUMBER OF COLLISIONS BY LOCATION 2012

LOCATION	FATAL	PERSONAL INJURY
URBAN ¹	778	90,937
RURAL ²	1,018	29,157
NOT STATED	27	2,046
TOTAL	1,823	122,140

1. Urban includes: (a) metropolitan roads and streets and other urban areas, or (b) a speed limit at the collision site of 60 km/h or less.
2. Rural includes: (a) primary or secondary highways, as well as local roads, or (b) a speed limit at the collision site exceeding 60 km/h.

Note: In Alberta, New Brunswick, Manitoba, and Saskatchewan, "urban" includes any area within the corporate boundaries of a city, town, village or hamlet. "Rural" includes any area outside of what is defined as "urban".