

RESOURCE SERVICES 2015-16



ᐃᑦᓄᐱᑦᑕᑦᑕᑦᑕᑦᑕᑦ
Ilinniqtuliqiyikkut
Department of Education
Ministère de l'Éducation

ᑎᑦᑕᑦᑕᑦᑕᑦ
CATALOGUE

K22

P – L
Primary
Language Arts

ᐅᖃᐅᑦᑕᑎᓂᖃ
Uqausiliriniq
K – 3

\$3.00

**ᐅᓂᖃᑕᐅᖃᑦᑕᐅᖃ
Thomasié Goes Caribou Hunting**

ᐅᓂᖃᑕᐅᖃᑦᑕᐅᖃ: ᐃᑦᑕᐅᖃ ᐅᖃᑦᑕᐅᖃ
ᑎᑎᖃᑕᓂᖃᑦᑕᐅᖃ: ᐅᓂᖃ ᐅᖃᑦᑕᐅᖃ
ᐅᓂᖃᑦᑕᐅᖃᑦ ᐃᑦᑕᐅᖃ ᐅᖃᑦᑕᐅᖃᑦ ᐅᖃᑦᑕᐅᖃ ᐅᖃᑦᑕᐅᖃᑦ.
ᑎᑎᖃᑕᓂᖃᑦᑕᐅᖃ ᐅᖃᑦᑕᐅᖃ.



ᐃᑕᐅᖃ
AVAILABLE

K23

P – L
Primary
Language Arts

ᐅᖃᐅᑦᑕᑎᓂᖃ
Uqausiliriniq
K – 3

\$3.00

**ᐅᓂᖃ ᐅᖃᑦᑕᐅᖃ
Staying In A Tent**

ᐅᓂᖃᑕᐅᖃᑦᑕᐅᖃ: ᐃᑦᑕᐅᖃ ᐅᖃᑦᑕᐅᖃ
ᑎᑎᖃᑕᓂᖃᑦᑕᐅᖃ: ᐅᓂᖃ ᐅᖃᑦᑕᐅᖃ
ᐅᓂᖃᑦᑕᐅᖃᑦ ᐅᓂᖃᑦᑕᐅᖃ ᐅᖃᑦᑕᐅᖃ ᐅᖃᑦᑕᐅᖃᑦ ᐅᖃᑦᑕᐅᖃᑦ.
ᑎᑎᖃᑕᓂᖃᑦᑕᐅᖃ ᐅᖃᑦᑕᐅᖃ.



ᐃᑕᐅᖃ
AVAILABLE

K24

P – L
Primary
Language Arts

ᐅᖃᐅᑦᑕᑎᓂᖃ
Uqausiliriniq
K – 3

\$3.00

**ᐅᓂᖃᑦᑕᐅᖃᑦᑕᐅᖃ
Going Home**

ᐅᓂᖃᑕᐅᖃᑦᑕᐅᖃ: ᐃᑦᑕᐅᖃ ᐅᖃᑦᑕᐅᖃ
ᑎᑎᖃᑕᓂᖃᑦᑕᐅᖃ: ᐅᓂᖃ ᐅᖃᑦᑕᐅᖃ
ᐅᓂᖃᑦᑕᐅᖃᑦ ᐅᓂᖃᑦᑕᐅᖃ ᐅᖃᑦᑕᐅᖃᑦ ᐅᖃᑦᑕᐅᖃᑦ.
ᑎᑎᖃᑕᓂᖃᑦᑕᐅᖃ ᐅᖃᑦᑕᐅᖃ.



ᐃᑕᐅᖃ
AVAILABLE

K26

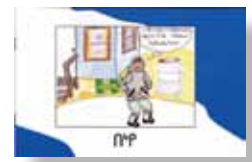
P – L
Primary
Language Arts

ᐅᖃᐅᑦᑕᑎᓂᖃ
Uqausiliriniq
K – 3

\$6.00

**ᑎᖃᑦ
Tikki**

ᐅᓂᖃᑕᐅᖃᑦᑕᐅᖃ: ᐅᖃᑦᑕᐅᖃ
ᑎᑎᖃᑕᓂᖃᑦᑕᐅᖃ: ᐅᖃᑦᑕᐅᖃ ᐅᖃᑦᑕᐅᖃ
ᐅᓂᖃᑦᑕᐅᖃᑦ ᐅᖃᑦᑕᐅᖃ ᐅᖃᑦᑕᐅᖃᑦ ᐅᖃᑦᑕᐅᖃᑦ.
ᑎᑎᖃᑕᓂᖃᑦᑕᐅᖃ ᐅᖃᑦᑕᐅᖃ.



ᐃᑕᐅᖃᑦᑕᐅᖃᑦᑕᐅᖃᑦ
NOT AVAILABLE

K20

P – SC
Primary
Science

ᓄᓇᓂᓱᓱᓂᓂ
Nunavusiutit
K – 3

ᓄᓇᓂᓱᓱᓂᓂ ᐱᓂᓂᓱᓂᓂ
It's Not Easy Being a Polar Bear

ᓱᓂᓂᓱᓱᓂᓂ ᐱᓂᓂᓱᓱᓂᓂ ᓱᓂ ᐱᓂᓂᓱᓂᓂ ᓂᓂᓂᓱᓂᓂᓂᓂᓂ 1991.
ᐱᓂᓂᓱᓱᓂᓂᓂᓂ ᐱᓂᓂᓱᓱᓂᓂᓂᓂᓂᓂᓂ ᓂᓂᓂᓱᓂᓂ 1985. ᓂᓂᓂᓱᓂᓂᓂ
ᓄᓇᓂᓱᓱᓂᓂ ᐱᓂᓂᓱᓂᓂᓂ.

ᓱᓂᓂᓱᓱᓂᓂ ᓂᓂᓂᓱᓂᓂᓂ.



ᐱᓂᓂᓱᓂᓂᓂᓂᓂ
NOT AVAILABLE

K2

P – SC
Primary
Science

ᓄᓇᓂᓱᓱᓂᓂ
Nunavusiutit
K – 3

ᐱᓂᓂᓱᓱᓂᓂ ᓂᓂᓂᓱᓂᓂᓂᓂᓂ ᓂᓂᓂᓱᓂᓂ
One Cold Snowy Morning

ᓱᓂᓂᓱᓱᓂᓂ ᐱᓂᓂᓱᓱᓂᓂ ᐱᓂ ᓄᓇᓂᓱᓱᓂᓂ ᓂᓂᓂᓱᓂᓂᓂᓂᓂᓂ 1991.
ᐱᓂᓂᓱᓱᓂᓂᓂᓂᓂ ᐱᓂᓂᓱᓱᓂᓂᓂᓂᓂᓂᓂ ᓂᓂᓂᓱᓂᓂ 1985, ᓂᓂ ᐱᓂᓂᓱᓂ
ᓂᓂᓂᓱᓂᓂᓂ. ᓂᓂᓂᓱᓂᓂᓂᓂ ᓂᓂᓂᓱᓂᓂᓂᓂᓂᓂᓂ ᓂᓂᓂᓱᓂᓂᓂᓂᓂ.

ᓱᓂᓂᓱᓱᓂᓂ ᓂᓂᓂᓱᓂᓂᓂ.



ᐱᓂᓂᓱᓂᓂᓂᓂᓂ
NOT AVAILABLE

K5

P – SC
Primary
Science

ᓄᓇᓂᓱᓱᓂᓂ
Nunavusiutit
K – 3

ᓱᓂ ᓂᓂᓂ ᐱᓂᓂᓱᓂᓂ?
Whose Feet Are These?

ᓱᓂᓂᓱᓱᓂᓂ ᐱᓂᓂᓱᓱᓂᓂ ᓂᓂ ᓂᓂᓂᓱᓂᓂ ᓂᓂᓂᓱᓂᓂᓂᓂᓂᓂ 1991.
ᐱᓂᓂᓱᓱᓂᓂᓂᓂᓂ ᐱᓂᓂᓱᓱᓂᓂᓂᓂᓂᓂᓂ ᓂᓂᓂᓱᓂᓂ 1985, ᓂᓂ ᐱᓂᓂᓱᓂ
ᓂᓂᓂᓱᓂᓂᓂ. ᓂᓂᓂᓱᓂᓂᓂᓂ ᓂᓂᓂᓱᓂᓂᓂᓂᓂᓂᓂᓂ ᓂᓂᓂᓱᓂᓂᓂᓂᓂ.

ᓱᓂᓂᓱᓱᓂᓂ ᓂᓂᓂᓱᓂᓂᓂ.



ᐱᓂᓂᓱᓂᓂᓂᓂᓂ
NOT AVAILABLE

K6

P – SC
Primary
Science

ᓄᓇᓂᓱᓱᓂᓂ
Nunavusiutit
K – 3

ᓱᓂ ᓂᓂ ᓂᓂᓂᓱᓂᓂ?
Whose Nose is This?

ᓱᓂᓂᓱᓱᓂᓂ ᐱᓂᓂᓱᓱᓂᓂ ᓂᓂ ᓂᓂᓂᓱᓂᓂ ᓂᓂᓂᓱᓂᓂᓂᓂᓂᓂ 1991.
ᐱᓂᓂᓱᓱᓂᓂᓂᓂᓂ ᐱᓂᓂᓱᓱᓂᓂᓂᓂᓂᓂᓂ ᓂᓂᓂᓱᓂᓂ 1985, ᓂᓂ ᐱᓂᓂᓱᓂ
ᓂᓂᓂᓱᓂᓂᓂ. ᐱᓂᓂᓱᓂᓂᓂᓂᓂ ᓂᓂᓂᓱᓂᓂᓂ ᓂᓂᓂᓱᓂᓂᓂᓂᓂᓂ.

ᓱᓂᓂᓱᓱᓂᓂ ᓂᓂᓂᓱᓂᓂᓂ.



ᐱᓂᓂᓱᓂᓂᓂᓂᓂ
NOT AVAILABLE

K29

P – H
Primary
Health

ግምገማ የሥራ ስራ
Aulajaaqtut
K – 3

\$3.00

**የግምገማ ልማት ለሰራተኛው ሰዓት
How I Helped During the Week**

ግምገማ የሥራ ስራ: ልማት ለሰራተኛው ሰዓት, ለሰራተኛው ሰዓት ለሰራተኛው ሰዓት
ግምገማ የሥራ ስራ: ልማት ለሰራተኛው ሰዓት

ግምገማ የሥራ ስራ ለሰራተኛው ሰዓት ለሰራተኛው ሰዓት ለሰራተኛው ሰዓት ለሰራተኛው ሰዓት
ግምገማ የሥራ ስራ ለሰራተኛው ሰዓት ለሰራተኛው ሰዓት ለሰራተኛው ሰዓት ለሰራተኛው ሰዓት

ግምገማ የሥራ ስራ ለሰራተኛው ሰዓት



ግምገማ የሥራ ስራ
LIMITED
QUANTITIES

K30

P – H
Primary
Health

ግምገማ የሥራ ስራ
Aulajaaqtut
K – 3

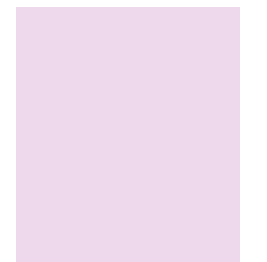
\$3.00

**ግምገማ የሥራ ስራ ለሰራተኛው ሰዓት
Hard Time**

ግምገማ የሥራ ስራ: ልማት ለሰራተኛው ሰዓት
ግምገማ የሥራ ስራ: ልማት ለሰራተኛው ሰዓት

ግምገማ የሥራ ስራ ለሰራተኛው ሰዓት ለሰራተኛው ሰዓት ለሰራተኛው ሰዓት ለሰራተኛው ሰዓት
ግምገማ የሥራ ስራ ለሰራተኛው ሰዓት ለሰራተኛው ሰዓት ለሰራተኛው ሰዓት ለሰራተኛው ሰዓት

ግምገማ የሥራ ስራ ለሰራተኛው ሰዓት



ግምገማ የሥራ ስራ
NOT AVAILABLE

309

P – H
Primary
Health

ግምገማ የሥራ ስራ
Aulajaaqtut
K – 3

\$3.00

**ግምገማ የሥራ ስራ ለሰራተኛው ሰዓት
Fruits and Vegetables**

ግምገማ የሥራ ስራ: ልማት ለሰራተኛው ሰዓት
ግምገማ የሥራ ስራ: ልማት ለሰራተኛው ሰዓት

ግምገማ የሥራ ስራ ለሰራተኛው ሰዓት ለሰራተኛው ሰዓት ለሰራተኛው ሰዓት ለሰራተኛው ሰዓት
ግምገማ የሥራ ስራ ለሰራተኛው ሰዓት ለሰራተኛው ሰዓት ለሰራተኛው ሰዓት ለሰራተኛው ሰዓት

ግምገማ የሥራ ስራ ለሰራተኛው ሰዓት



ግምገማ የሥራ ስራ
AVAILABLE

310

P – H
Primary
Health

ግምገማ የሥራ ስራ
Aulajaaqtut
K – 3

\$3.00

**ግምገማ የሥራ ስራ ለሰራተኛው ሰዓት
Best Gift**

ግምገማ የሥራ ስራ: ልማት ለሰራተኛው ሰዓት
ግምገማ የሥራ ስራ: ልማት ለሰራተኛው ሰዓት

ግምገማ የሥራ ስራ ለሰራተኛው ሰዓት ለሰራተኛው ሰዓት ለሰራተኛው ሰዓት ለሰራተኛው ሰዓት
ግምገማ የሥራ ስራ ለሰራተኛው ሰዓት ለሰራተኛው ሰዓት ለሰራተኛው ሰዓት ለሰራተኛው ሰዓት



ግምገማ የሥራ ስራ
AVAILABLE

مدرسة جسر الأردن
MIDDLE

226

M – L
Middle School
Language Arts

▶ ᐅᓴᓂᓴᓂᓴᓂᓴ
Uqausiliriniq
4 – 6

\$9.95

ᐱᓂ ᓴᓂᓴᓂᓴᓂᓴ ᐱᓴᓂᓴᓂᓴ
Peter Solves a Mystery Crime

▶ ᓂᓂᓂᓂᓴᓂᓴᓂᓴ: ᓂᓴᓴ ᓂᓴᓂᓴᓂᓴ
ᓂᓴᓂᓴᓂᓴᓂᓴᓂᓴ: ᓂᓴᓂᓴᓂᓴ

ᐱᓂ ᐃᓴᓂᓴᓂᓴᓂᓴᓂᓴᓂᓴ ᐱᓴᓂᓴᓂᓴᓂᓴ ᓂᓴᓂᓴᓂᓴᓂᓴ. ᓂᓴᓂᓴᓂᓴᓂᓴ ᐃᓴᓂᓴᓂᓴᓂᓴᓂᓴ
ᐃᓂᓴᓂᓴᓂᓴ ᓂᓴᓂᓴᓂᓴᓂᓴᓂᓴᓂᓴ ᓂᓴᓂᓴᓂᓴᓂᓴ. <ᓂᓴᓂᓴᓂᓴᓂᓴᓂᓴ ᐃᓂᓴᓂᓴᓂᓴᓂᓴᓂᓴ
> ᐃᓂᓴᓂᓴᓂᓴᓂᓴᓂᓴᓂᓴᓂᓴ ᓂᓴᓂᓴᓂᓴᓂᓴᓂᓴᓂᓴ.



ᐱᓂᓂᓴ
AVAILABLE

7-7c 9-7c 4d5n°σc°φc
Δc°σ<4°ήc <4L <4°L4°b<χc
JUNIOR & HIGH SCHOOL

212
H – SC
High School
Science

ᓄᓇᓴᓐᓄᓐ
Nunavusiutit
10 – 12
\$18.00

**ᑎᓐᓄᓐ ᓄᓇᓴᓐ
Birds of Nunavut**

ᓄᓐᓄᓐᓄᓐᓄᓐ: M. Wyndham (ᓄᓐᓄᓐ ᓐᖃᓐᓄᓐᓄᓐ)
ᑎᑎᓐᓄᓐᓄᓐᓄᓐ: ᐅᓐ ᓄᓐᓄᓐ

ᓄᓐᓄᓐᓄᓐᓄᓐ ᓄᓐᓄᓐᓄᓐᓄᓐ ᓄᓐᓄᓐᓄᓐᓄᓐ ᓄᓐᓄᓐᓄᓐᓄᓐ, ᐱᑎᓐᓄᓐᓄᓐ, ᑎᓐᓄᓐᓄᓐ ᐱᑎᓐᓄᓐᓄᓐ, ᓄᓐᓄᓐᓄᓐᓄᓐ ᓄᓐᓄᓐᓄᓐᓄᓐ, ᓄᓐᓄᓐᓄᓐᓄᓐ ᓄᓐᓄᓐᓄᓐᓄᓐ (ᓐᓄᓐᓄᓐᓄᓐ ᓄᓐᓄᓐ ᓄᓐᓄᓐᓄᓐᓄᓐ), ᓄᓐᓄᓐᓄᓐᓄᓐ ᓄᓐᓄᓐᓄᓐᓄᓐ ᓄᓐᓄᓐᓄᓐᓄᓐ ᓄᓐᓄᓐᓄᓐᓄᓐ. ᓄᓐᓄᓐᓄᓐᓄᓐ ᓄᓐᓄᓐᓄᓐᓄᓐ ᓄᓐᓄᓐᓄᓐᓄᓐ ᓄᓐᓄᓐᓄᓐᓄᓐ.



ᐱᓄᓐ
AVAILABLE

255
H – SC
High School
Science

ᓄᓇᓴᓐᓄᓐ
Nunavusiutit
10 – 12

**ᓄᓐᓄᓐ ᓄᓐᓄᓐ ᓄᓇᓴᓐ
Terrestrial Mammals of Nunavut**

ᓄᓐᓄᓐᓄᓐᓄᓐ: ᓄᓐᓄᓐ ᓄᓐᓄᓐ – ᓄᓐᓄᓐ
ᐱᓐᓄᓐᓄᓐᓄᓐ: ᓄᓐᓄᓐᓄᓐᓄᓐ ᓄᓐᓄᓐᓄᓐᓄᓐ ᐱᓐᓄᓐᓄᓐ

ᓄᓐᓄᓐᓄᓐᓄᓐ ᓄᓐᓄᓐᓄᓐᓄᓐ ᓄᓐᓄᓐᓄᓐᓄᓐᓄᓐ ᓄᓐᓄᓐᓄᓐᓄᓐᓄᓐ: ᐱᑎᓐᓄᓐᓄᓐ, ᓄᓐᓄᓐᓄᓐᓄᓐ, ᓄᓐᓄᓐᓄᓐᓄᓐ, ᓄᓐᓄᓐᓄᓐᓄᓐᓄᓐ, ᓄᓐᓄᓐᓄᓐᓄᓐ, ᓄᓐᓄᓐᓄᓐᓄᓐ, ᓄᓐᓄᓐᓄᓐᓄᓐᓄᓐ ᓄᓐᓄᓐᓄᓐᓄᓐ. ᓄᓐᓄᓐᓄᓐᓄᓐ ᓄᓐᓄᓐᓄᓐᓄᓐ ᓄᓐᓄᓐᓄᓐᓄᓐ. ᐱᓄᓐᓄᓐᓄᓐᓄᓐᓄᓐ ᓄᓐᓄᓐᓄᓐᓄᓐᓄᓐᓄᓐ.



ᐱᓄᓐ
AVAILABLE

280
H – SC
High School
Science

ᓄᓇᓴᓐᓄᓐ
Nunavusiutit
10 – 12
\$25.00

**ᓄᓐᓄᓐ ᓄᓇᓴᓐ
Common Plants of Nunavut**

ᓄᓐᓄᓐᓄᓐᓄᓐ: ᓄᓐᓄᓐ ᓄᓐᓄᓐ ᓄᓐᓄᓐ ᓄᓐᓄᓐ
ᐱᓐᓄᓐᓄᓐᓄᓐ: ᓄᓐᓄᓐ ᐱᓄᓐᓄᓐᓄᓐᓄᓐ ᓄᓐᓄᓐᓄᓐᓄᓐ ᐱᓐᓄᓐᓄᓐᓄᓐᓄᓐᓄᓐ

ᓄᓐᓄᓐᓄᓐᓄᓐ ᓄᓐᓄᓐᓄᓐᓄᓐ ᓄᓐᓄᓐᓄᓐᓄᓐᓄᓐ ᓄᓐᓄᓐᓄᓐᓄᓐᓄᓐ. ᓄᓐᓄᓐᓄᓐᓄᓐᓄᓐ ᓄᓐᓄᓐᓄᓐᓄᓐᓄᓐ ᓄᓐᓄᓐᓄᓐᓄᓐᓄᓐ. ᓄᓐᓄᓐᓄᓐᓄᓐᓄᓐ ᓄᓐᓄᓐ ᓄᓐᓄᓐᓄᓐᓄᓐᓄᓐᓄᓐ ᓄᓐᓄᓐᓄᓐᓄᓐ.



ᐱᓄᓐ
AVAILABLE

020

J – IQ
Junior
Inuit Qaujimagatuqangit

ᐃᓄᖃᓂᓂᓐ
Inuuqatigiit
8 – 9

\$5.00

ᐱᓂᓂᓐ ᐱᓂᓂᓐ ᐱᓂᓂᓐ
Childhood Stories of Martha Sangoya

ᐃᓄᖃᓂᓂᓐ: ᐱᓂᓂᓐ

ᐱᓂᓂᓐ ᐱᓂᓂᓐ ᐃᓄᓂᓂᓐ ᐃᓄᓂᓂᓐ ᐱᓂᓂᓐ ᐱᓂᓂᓐ
ᖃᓄᓂᓂᓐ ᐱᓂᓂᓐ ᐱᓂᓂᓐ ᐱᓂᓂᓐ ᐱᓂᓂᓐ ᐱᓂᓂᓐ
ᐱᓂᓂᓐ ᐱᓂᓂᓐ ᐱᓂᓂᓐ ᐱᓂᓂᓐ ᐱᓂᓂᓐ ᐱᓂᓂᓐ ᐱᓂᓂᓐ



ᐱᓂᓂᓐ ᐱᓂᓂᓐ
NOT AVAILABLE

021

J – IQ
Junior
Inuit Qaujimagatuqangit

ᐃᓄᖃᓂᓂᓐ
Inuuqatigiit
8 – 9

\$7.00

ᐱᓂᓂᓐ ᐱᓂᓂᓐ ᐱᓂᓂᓐ
Childhood Stories of Leetia Atagutta

ᐃᓄᖃᓂᓂᓐ: ᐱᓂᓂᓐ

ᐱᓂᓂᓐ ᐱᓂᓂᓐ ᐃᓄᓂᓂᓐ ᐃᓄᓂᓂᓐ ᐱᓂᓂᓐ ᐱᓂᓂᓐ
ᐱᓂᓂᓐ ᐱᓂᓂᓐ ᐱᓂᓂᓐ ᐱᓂᓂᓐ ᐱᓂᓂᓐ ᐱᓂᓂᓐ ᐱᓂᓂᓐ
ᐱᓂᓂᓐ ᐱᓂᓂᓐ ᐱᓂᓂᓐ ᐱᓂᓂᓐ ᐱᓂᓂᓐ ᐱᓂᓂᓐ ᐱᓂᓂᓐ



ᐱᓂᓂᓐ ᐱᓂᓂᓐ
NOT AVAILABLE

022

J – IQ
Junior
Inuit Qaujimagatuqangit

ᐃᓄᖃᓂᓂᓐ
Inuuqatigiit
8 – 9

\$6.00

ᐱᓂᓂᓐ ᐱᓂᓂᓐ
Child Rearing Customs

ᐃᓄᖃᓂᓂᓐ: ᐱᓂᓂᓐ

ᐱᓂᓂᓐ ᐱᓂᓂᓐ ᐃᓄᓂᓂᓐ ᐃᓄᓂᓂᓐ ᐱᓂᓂᓐ ᐱᓂᓂᓐ
ᐱᓂᓂᓐ ᐱᓂᓂᓐ ᐱᓂᓂᓐ ᐱᓂᓂᓐ ᐱᓂᓂᓐ ᐱᓂᓂᓐ ᐱᓂᓂᓐ
ᐱᓂᓂᓐ ᐱᓂᓂᓐ ᐱᓂᓂᓐ ᐱᓂᓂᓐ ᐱᓂᓂᓐ ᐱᓂᓂᓐ ᐱᓂᓂᓐ



ᐱᓂᓂᓐ ᐱᓂᓂᓐ
NOT AVAILABLE

K38

H – IQ
High School
Inuit Qaujimagatugangit

ᐃᓄᓄᓐ
Inuuqatigiit
10 – 12

\$20.00

**ᐃᓄᓄᓐ ᐱᓄᓄᓐ
Inuit Games**

ᐱᓄᓄᓐ ᐱᓄᓄᓐ ᐱᓄᓄᓐ ᐱᓄᓄᓐ ᐱᓄᓄᓐ ᐱᓄᓄᓐ
ᐱᓄᓄᓐ ᐱᓄᓄᓐ ᐱᓄᓄᓐ ᐱᓄᓄᓐ ᐱᓄᓄᓐ
1989. ᐱᓄᓄᓐ ᐱᓄᓄᓐ ᐱᓄᓄᓐ ᐱᓄᓄᓐ
ᐱᓄᓄᓐ ᐱᓄᓄᓐ ᐱᓄᓄᓐ ᐱᓄᓄᓐ
ᐱᓄᓄᓐ ᐱᓄᓄᓐ ᐱᓄᓄᓐ ᐱᓄᓄᓐ
ᐱᓄᓄᓐ ᐱᓄᓄᓐ ᐱᓄᓄᓐ ᐱᓄᓄᓐ
ᐱᓄᓄᓐ ᐱᓄᓄᓐ ᐱᓄᓄᓐ ᐱᓄᓄᓐ

ᐱᓄᓄᓐ ᐱᓄᓄᓐ ᐱᓄᓄᓐ



ᐱᓄᓄᓐ ᐱᓄᓄᓐ
LIMITED
QUANTITIES

Δb↔n<PΠb↔Δc RESOURCES

ԳՐԱԿԱՆ ԴՐՈՒՄՆԵՐ Bulletin Board Borders



ԱՇԽԱՏ
AVAILABLE

261

ԾՐԻՆԻՆԻ ԳՐԱԿԱՆՆԵՐ
ՈՐՈՇՆԵՐՆԵՐ ԴՐՈՒՄ ԳՐԱԿԱՆ
Winter Camp
by Susan Avinga



ԱՇԽԱՏ
AVAILABLE

262

ՃԱՆՊՆԵՐԻ ԳՐԱԿԱՆՆԵՐ
ՈՐՈՇՆԵՐՆԵՐ ԿՈՆ ԴՐՈՒՄ
Dwelling
by Morty Alooooloo



ԱՇԽԱՏ
AVAILABLE

263

ԼՆԻՆԻՆԻ ՈՐՈՇՆԵՐՆԵՐ
<< ԵՐԵՐ
Teenagers
by Babah Kalluk



ԱՇԽԱՏ
AVAILABLE

264

ԲՈՒՆԵՐ ՈՐՈՇՆԵՐՆԵՐ
ՇՈՒ ԵՐԵՐ
Pond Inlet
by Dawn Katsak



ԱՇԽԱՏ
AVAILABLE

265

ԳՐԱԿԱՆ ՈՐՈՇՆԵՐՆԵՐ
ԳՐԱԿԱՆ ԴՐՈՒՄ
Whales
by Abigail Ootoova



ԱՇԽԱՏ
AVAILABLE

260

ԳՐԱԿԱՆ ԳՐԱԿԱՆՆԵՐ ՈՐՈՇՆԵՐՆԵՐ ԼՇ ԵՐԵՐ
Women's Clothing
by Martha Kyak

by Ippiksaut Friesen ϥϥϥ ρΕΣΟ



275
ϥϥϥ
Ski-doo

ϥϥϥ
AVAILABLE



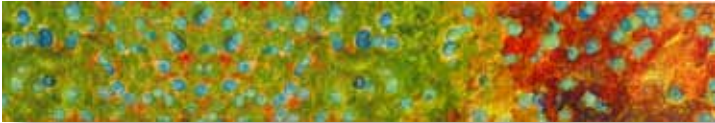
276
ϥϥϥ ϥϥϥϥϥϥ ϥϥ ϥϥϥ
Mittens
by Carmen Kyak

ϥϥϥ
AVAILABLE



277
ϥϥϥ ϥϥϥϥϥϥ ϥϥ ϥϥϥ ϥϥϥ
Kamiit

ϥϥϥ
AVAILABLE



278
ϥϥϥϥϥϥ ϥϥϥϥϥϥ ϥϥ ϥϥϥ
Berries
by Carmen Kyak

ϥϥϥ
AVAILABLE



279
ϥϥϥ ϥϥϥϥ ϥϥϥϥϥϥ ϥϥ ϥϥϥ
Syllabics
by Martha Kyak

ϥϥϥ
AVAILABLE



274
ϥϥϥ ϥϥϥϥϥϥ ϥϥ ϥϥϥ
Uluit
by Martha Kyak

ϥϥϥ
AVAILABLE



271/272

ዲጋይቲል ስራዎች ለጥናትና ለጥምህርት ገጽ ስራዎች ጋንታዎች

ፊት ለፊት ስራዎች

30 cm by 65 cm
(ዲጋይቲል ስራዎች ለጥምህርት)

58 cm by 185 cm
(ፊት ለፊት ስራዎች ለጥምህርት ስራዎች)

Growth Chart for Primary Classes

in two pieces

30 cm by 65 cm
(to be mounted 60 cm from floor)

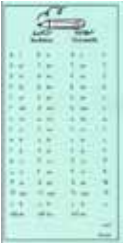
58 cm by 185 cm
(in two pieces, must be glued together)

በጥምህርት ስራዎች ለጥምህርት
by Martha Kyak

ለረጅም
AVAILABLE

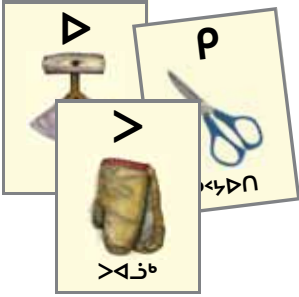
**ስራዎች
ልኔሲሲታሪ ስራዎች
Desktop Aids**

ስራዎች ለጥምህርት
LIMITED QUANTITIES



268
በጥምህርት (ል, ለ, ለ) ስራዎች
Syllabarium Cards

ስራዎች ለጥምህርት
LIMITED QUANTITIES



K2011-04
ልኔሲሲታሪ ስራዎች ለጥምህርት
Syllabic Charts

ልኔሲሲታሪ ስራዎች ለጥምህርት ስራዎች ለጥምህርት ስራዎች

ለረጅም
AVAILABLE

ՎՐՔՁԵՂԻ ՃՆԵԿԻ - ԳՐԳԵՆՇԱԿՆՈՇՆԵՇԻ

ԼԸ ԳՆԵՏԵ ՎԳԵՐԵԴՐՆԵՐԸ
Designed by Martha Kyak



Է՞ ՄՎՁԿ՞ ՎԳՐՎՆԸ
Photo provided by John Henderson

ԱՇԵՒ
AVAILABLE



ԼԸ ԳՆԵՏԵ ՎԳԵՐԵԴՐՆԵՐԸ
Designed by Martha Kyak

ԱՇԵՒ
AVAILABLE



ՉԴԴ ԳՆԵՏԵ ՎԳՐՎՆԸ
Photo provided by Moses Kyak

ԱՇԵՒ
AVAILABLE



ՉՆՎՎ ՄՎՁ ՎԳՐՎՆԸ
Photo provided by Gregor Hope

ԱՇԵՒ
AVAILABLE



ՉԴԴ ԳՆԵՏԵ ՎԳՐՎՆԸ
Photo provided by Moses Kyak

ԱՇԵՒ
AVAILABLE



ᐱᑦ ᐱᑦᐱᑦᐱᑦᐱᑦᐱᑦᐱᑦ ᐱᑦᐱᑦᐱᑦᐱᑦᐱᑦ
Photo provided by John Henderson

ᐱᑦᐱᑦᐱᑦ
AVAILABLE



ᐱᑦ ᐱᑦᐱᑦᐱᑦᐱᑦᐱᑦᐱᑦᐱᑦ
Designed by Martha Kyak

ᐱᑦᐱᑦᐱᑦᐱᑦᐱᑦᐱᑦ
LIMITED QUANTITIES



ᐱᑦ ᐱᑦᐱᑦᐱᑦᐱᑦᐱᑦᐱᑦ
Photo provided by Moses Kyak

ᐱᑦᐱᑦᐱᑦ
AVAILABLE



ᐱᑦᐱᑦᐱᑦ ᐱᑦᐱᑦᐱᑦᐱᑦᐱᑦ
Photo provided by Gregor Hope

ᐱᑦᐱᑦᐱᑦ
AVAILABLE



ᐱᑦ ᐱᑦᐱᑦᐱᑦᐱᑦᐱᑦᐱᑦ
Photo provided by Moses Kyak

ᐱᑦᐱᑦᐱᑦ
AVAILABLE

K41

**ቤግራም
Sealskin Kamik Charts**

ቤግራም ርፍካረ ሙሉሲሲረ ስፍኔብብ ወይሳይታሰር ቤግራም ጋሙ ለሰላምባርታሩ ልሙራፍጋርሲሳሩሳሩ ልሙራፍጋርሲሳሩ ልሙራፍጋርሲሳሩ ሰባፍጋሩ ልሁላ ወይሳይታሩ ልሁላ ልሁላ 1990.

A set of 8½ x 11 coloured charts with vinyl envelope describing how to make sealskin Kamiiit. Initiated by KDBE Teaching and Learning Centre. Illustrations and description by Rhoda Karetak 1990.



ለርፍጋራፍጋራ
NOT AVAILABLE

K42

**ጋጋሩ ልግሲሙ ልዎፍካረፍጋራ
Caribou Clothing Charts**

ቤግራም ርፍካረ ሙሉሲሲረ ስፍኔብብ ወይሳይታሰር ጋጋሩ ልዎፍካረፍጋራ ለሰላምባርታሩ ልሙራፍጋርሲሳሩሳሩ ልሙራፍጋርሲሳሩ ሰባፍጋሩ ልሁላ ወይሳይታሩ ልሁላ ልሁላ 1990.

A set of 8½ x 11 coloured charts with vinyl envelope describing how to make caribou clothing. Initiated by KDBE Teaching and Learning Centre, illustrations and description by Rhoda Karetak 1990.



ለርፍጋራፍጋራ
NOT AVAILABLE

K43

**ሙሶራሙሶ
Butchering Meat Charts**

ቤግራም ርፍካረ ሙሉሲሲረ ስፍኔብብ ወይሳይታሰር ሙሶራሙሶ ለሰላምባርታሩ ልሙራፍጋርሲሳሩሳሩ ልሙራፍጋርሲሳሩ ሰባፍጋሩ ልሁላ ወይሳይታሩ ልሁላ ልሁላ 1990.

A set of 8½ x 11 coloured charts with vinyl envelope describing how to prepare and cut meat for cooking or drying. Initiated by KDBE Teaching and Learning Centre, illustrations and description by Rhoda Karetak, 1990.



ለርፍጋራፍጋራ
NOT AVAILABLE