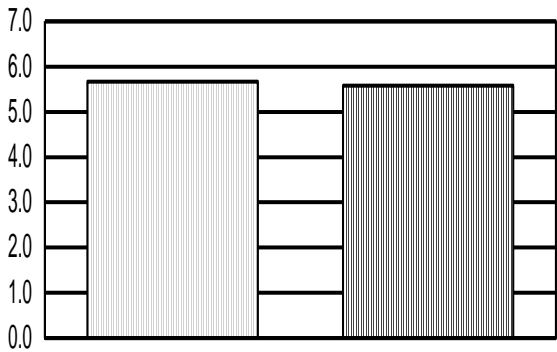




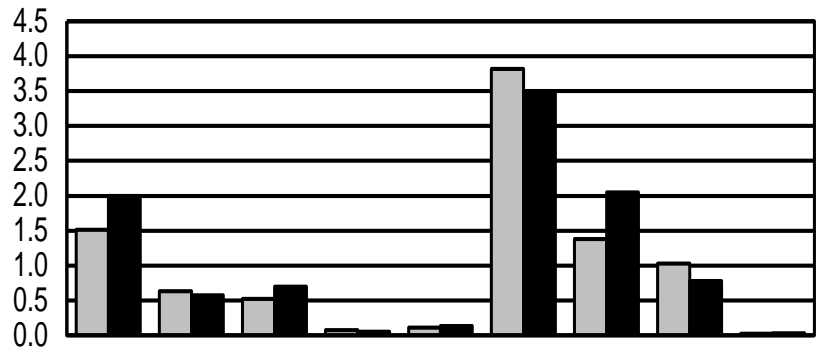
# Exports of Canadian Grain and Wheat Flour



## Year to date Tonnes (millions)



Wheat (except durum)



Durum Wheat Oats Barley Rye Flaxseed Canola Soybeans Peas Corn

Export clearances of Canadian grains and oilseeds during December totalled 3 237 thousand tonnes. Exports to date – 15 357 thousand - are 597 thousand tonnes (4%) more than those for the same period a year ago.

## TABLE OF CONTENTS

### EXPORTS OF CANADIAN GRAIN AND WHEAT FLOUR

---

Comparative Summary of Canadian Grain Exports.....	3
Clearance of Canadian Grain by Export Position.....	4

#### CLEARANCES OF CANADIAN GRAIN BY SECTOR

##### Table

1	Wheat.....	6
2	Durum Wheat.....	8
3	Oats.....	9
4	Barley.....	10
5	Rye.....	11
6	Flaxseed.....	12
7	Canola.....	13
8	Soybeans.....	14
9	Peas.....	15
10	Corn.....	16
11	Importers of Canadian grains.....	17
12	Clearance of Canadian Wheat (Including Durum) and Wheat Flour crop year 2008-2009 to 2012-2013.....	26
13	Custom Exports of Wheat Flour.....	28

##### Notes

- 1) Components in tables may not add exactly to the totals due to rounding.
- 2) In addition, Statistics Canada reported unlicensed exports to the United States: 336 200 (180 600) tonnes of Wheat excluding Durum, 272 100 (231 900) tonnes of Oats, 51 200 (25 600) tonnes of Rye 24 800 (17 900) tonnes of Flaxseed, 20 200 (50 300) tonnes of Canola, and 274 700(104 300) tonnes of Corn between August and November, 2012. Year ago figures are shown in brackets.
- 3) Grain may be re-exported to destinations beyond those reported.
- 4) All shipment tonnage will be allocated to the month of loading completion.
  - ❖ Totals may not agree due to rounding.
  - ❖ 0.0 Less than 50 tonnes
  - ❖ \* Denotes vessels with more than one destination, but total tonnage is shown for only the first destination.

For further information, please contact the Corporate Services of the Canadian Grain Commission at (204) 983-1570.

**(A) Comparative Summary of Canadian Grain Exports  
December 2012  
(in 000's of tonnes)**

	<b>Wheat</b>	<b>Durum wheat</b>	<b>Oats</b>	<b>Barley</b>	<b>Rye</b>	<b>Flaxseed</b>	<b>Canola</b>	<b>Soybean</b>	<b>Peas</b>	<b>Corn</b>	<b>Total</b>
<b>December, 2012</b>	1,378.2	331.8	95.5	155.8	3.7	75.1	657.7	446.6	85.9	6.5	3,236.9
<b>November, 2012</b>	875.7	436.3	89.7	215.1	7.5	12.4	725.3	785.6	55.0	19.6	3,222.2
<b>December, 2011</b>	1,261.1	239.9	89.3	73.2	5.3	25.4	935.0	450.0	196.4	1.3	3,276.9
<b>Crop Year to Date, 2012-2013</b>	5,579.2	2,002.8	569.6	703.4	46.2	125.3	3,470.2	2,054.4r	775.5	29.9	15,356.5
<b>Crop Year to Date, 2011-2012</b>	5,670.8	1,511.5	633.4	520.5	70.1	106.4	3,816.9	1,379.5	1,027.8	22.8	14,759.6
<b>Calendar Year 2012</b>	13,248.3	4,060.4	1,132.6	1,363.8	76.1	275.7	8,233.5	2,639.3r	1,353.5	80.8	32,464.0
<b>Calendar Year 2011</b>	13,007.8	3,226.5	1,125.3	1,083.5	142.3	257.4	7,799.9	1,877.3	2,316.9	692.5	31,529.5

**(B) Clearance of Canadian Grain by Export Position  
December 2012  
(in 000's of tonnes)**

	Wheat	Durum wheat	Oats	Barley	Rye	Flaxseed	Canola	Soybean	Peas	Corn	Total
<b>Prince Rupert</b>	370.7	-	-	42.5	-	-	141.5	-	-	-	554.6
<b>Vancouver</b>	530.9	68.9	-	82.6	-	26.6	430.1	88.0	76.2	-	1,303.3
<b>Thunder Bay</b>	39.3	37.9	31.2	-	-	36.2	41.1	-	9.0	-	194.7
<b>Ontario Elevators</b>	-	-	-	-	-	-	-	98.2	-	-	98.2
<b>Quebec</b>	48.0	2.7	-	-	-	-	-	28.8	-	-	79.5
<b>Baie Comeau</b>	92.5	64.0	-	-	-	-	-	37.4	-	-	193.8
<b>Prescott</b>	-	-	0.0	0.0	-	-	-	-	-	-	0.1
<b>Goderich</b>	0.5	-	-	-	-	-	-	19.5	-	-	20.0
<b>Sarnia</b>	11.7	-	-	-	-	-	-	-	-	6.5	18.1
<b>Montreal</b>	-	88.9	-	-	-	-	-	16.5	-	-	105.4
<b>Port Cartier</b>	97.6	-	-	-	-	-	-	24.5	-	-	122.1
<b>Sorel</b>	6.6	-	-	-	-	-	-	94.8	-	-	101.4
<b>Three Rivers</b>	30.9	26.5	-	-	-	-	-	11.8	-	-	69.3
<b>Halifax</b>	12.4	-	-	-	-	-	-	25.7	-	-	38.1
<b>Prairie Elevators</b>	137.2	42.9	64.3	30.6	3.7	12.4	45.1	1.3	0.6	-	338.3
<b>Total</b>	1,378.2	331.8	95.5	155.8	3.7	75.1	657.7	446.6	85.9	6.5	3,236.9

**(C) Clearance of Canadian Grain by Export Position  
Accumulative August 2012 to December 2012  
(in 000's of tonnes)**

	Wheat	Durum wheat	Oats	Barley	Rye	Flaxseed	Canola	Soybean	Peas	Corn	Total
<b>Prince Rupert</b>	1,093.0	2.9	-	261.3	-	-	642.3	-	-	-	1,999.6
<b>Vancouver</b>	2,486.3	311.2	9.4	253.1	6.8	47.5	2,358.2	325.3	763.5	-	6,561.3
<b>Churchill</b>	294.0	28.0	-	49.3	-	-	38.8	-	-	-	410.1
<b>Thunder Bay</b>	128.8	180.0	110.3	-	-	36.2	289.5	-	9.0	-	753.9
<b>Ontario Elevators</b>	14.2	-	2.1	-	-	-	-	201.6	-	11.0	228.9
<b>Quebec</b>	239.5	262.5	-	-	-	-	-	371.3	-	-	873.3
<b>Baie Comeau</b>	216.4	512.1	-	-	-	-	-	215.7	-	-	944.2
<b>Owen Sound</b>	13.8	-	-	-	-	-	-	-	-	-	13.8
<b>Prescott</b>	-	-	0.0	0.2	-	-	-	-	-	-	0.2
<b>Goderich</b>	68.1	-	-	-	-	-	-	47.6	-	-	115.7
<b>Sarnia</b>	69.6	-	-	-	-	-	-	-	-	18.9	88.5
<b>Montreal</b>	70.0	356.4	-	-	-	-	-	197.1	-	-	623.4
<b>Port Cartier</b>	192.5	57.3	-	-	-	-	-	160.2	-	-	410.1
<b>Sorel</b>	25.7	18.1	-	-	-	-	-	425.5	-	-	469.3
<b>Three Rivers</b>	146.7	134.6	-	-	-	-	-	75.6	-	-	356.9
<b>Halifax</b>	36.6	-	-	-	-	-	-	25.7	-	-	62.3
<b>Prairie Elevators</b>	483.9	139.7	447.8	139.5	39.3	41.6	141.4	8.7	3.0	-	1,444.9
<b>Total</b>	5,579.2	2,002.8	569.6	703.4	46.2	125.3	3,470.2	2,054.4	775.5	29.9	15,356.5

**Clearance of Canadian Grain by Sector**  
**December 2012**  
*(in 000's of tonnes)*

Wheat		Via Pacific Seaboard	Via Thunder Bay	Via Eastern Elevators	Via Atlantic Seaboard	Via Prairie Elevators	Total	2012-2013 Crop Year to Date	2011-2012 Crop Year to Date
Western Europe	Belgium	-	-	-	-	-	-	10.6	5.0
	Italy	-	-	-	-	-	-	76.7	100.3
	Netherlands	-	-	-	-	-	-	-	11.2
	Portugal	-	-	-	-	-	-	27.9	-
	Spain	-	-	-	-	-	-	3.8	-
	United Kingdom	-	-	83.9	-	-	83.9	187.6	146.2
	<b>Total</b>	-	-	83.9	-	-	83.9	306.7	262.7
Africa	East Africa	-	-	-	-	-	-	41.1	218.0
	Ghana	-	-	-	-	-	-	28.2	-
	Kenya	-	-	-	-	-	-	18.7	-
	Morocco	-	-	-	-	-	-	14.0	-
	Mozambique	12.0	-	-	-	-	12.0	22.0	-
	Namibia	-	-	-	-	-	-	10.7	-
	Nigeria	-	-	41.0	-	-	41.0	131.9	109.4
	South Africa	-	-	-	-	-	-	22.1	35.3
	Sudan	-	-	44.0	-	-	44.0	80.0	176.8
	Tanzania	39.3	-	-	-	-	39.3	52.5	-
	Uganda	-	-	-	-	-	-	9.9	-
	West Africa	-	-	39.1	-	-	39.1	197.5	202.6
	<b>Total</b>	51.3	-	124.0	-	-	175.3	628.5	742.1
Asia	Bangladesh	50.3	-	-	-	-	50.3	214.6	439.7
	China P.R.	158.6	-	-	-	-	158.6	274.1	56.8
	Indonesia	152.8	-	-	-	-	152.8	433.5	348.7
	Iran	-	-	-	-	-	-	-	27.5
	Iraq	-	-	-	-	-	-	52.5	157.5
	Japan	149.2	-	-	-	-	149.2	624.1	420.4
	Korea, South	31.3	-	-	-	-	31.3	197.9	60.6
	Malaysia	16.0	-	-	-	-	16.0	100.2	50.7
	Philippines	110.4	-	-	-	-	110.4	134.9	22.6
	Saudi Arabia	-	-	-	-	-	-	115.5	288.8
	Sri Lanka	72.9	-	-	-	-	72.9	295.1	207.6
	Taiwan	-	-	-	-	-	-	-	1.2
	Thailand	-	-	-	-	-	-	22.0	39.7
	United Arab Emirates	-	-	-	-	-	-	36.0	94.9
	Vietnam	3.1	-	-	-	-	3.1	47.4	-
<b>Total</b>	744.5	-	-	-	-	744.5	2,547.9	2,216.5	

**Clearance of Canadian Grain by Sector**  
**December 2012**  
*(in 000's of tonnes)*

<b>Wheat</b>		<b>Via Pacific Seaboard</b>	<b>Via Thunder Bay</b>	<b>Via Eastern Elevators</b>	<b>Via Atlantic Seaboard</b>	<b>Via Prairie Elevators</b>	<b>Total</b>	<b>2012-2013 Crop Year to Date</b>	<b>2011-2012 Crop Year to Date</b>
<b>Western Hemisphere</b>	<b>Caribbean</b>	-	-	-	-	-	-	-	18.7
	<b>Chile</b>	-	-	-	-	-	-	77.4	77.0
	<b>Colombia</b>	27.9	-	-	-	-	27.9	227.5	402.7
	<b>Costa Rica</b>	-	-	-	-	-	-	34.5	35.3
	<b>Cuba</b>	-	-	-	-	-	-	95.0	108.1
	<b>Dominican Republic</b>	-	-	-	12.4	-	12.4	12.4	-
	<b>Ecuador</b>	-	-	-	-	-	-	132.6	140.1
	<b>Guyana</b>	-	-	6.6	-	-	6.6	14.7	24.1
	<b>Mexico</b>	50.4	-	-	-	-	50.4	361.4	615.2
	<b>Peru</b>	27.5	-	-	-	-	27.5	219.9	152.5
	<b>Puerto Rico</b>	-	18.7	-	-	-	18.7	41.7	37.3
	<b>United States</b>	-	20.6	12.2	-	137.2	170.0	668.3	549.4
	<b>Venezuela</b>	-	-	61.0	-	-	61.0	210.9	289.1
	<b>Total</b>	105.8	39.3	79.7	12.4	137.2	374.4	2,096.2	2,449.5
<b>Total - All Countries</b>		901.6	39.3	287.7	12.4	137.2	1,378.2	5,579.2	5,670.8

**Clearance of Canadian Grain by Sector**  
**December 2012**  
*(in 000's of tonnes)*

<b>Durum wheat</b>		<b>Via Pacific Seaboard</b>	<b>Via Thunder Bay</b>	<b>Via Eastern Elevators</b>	<b>Via Prairie Elevators</b>	<b>Total</b>	<b>2012-2013 Crop Year to Date</b>	<b>2011-2012 Crop Year to Date</b>
<b>Western Europe</b>	<b>Belgium</b>	-	18.0	-	-	18.0	259.5	68.4
	<b>France</b>	-	-	-	-	-	-	22.0
	<b>Germany</b>	-	19.9	-	-	19.9	19.9	37.8
	<b>Italy</b>	-	-	-	-	-	269.0	400.0
	<b>Netherlands</b>	-	-	-	-	-	11.0	43.2
	<b>Portugal</b>	-	-	-	-	-	22.0	-
	<b>Spain</b>	-	-	-	-	-	65.4	-
	<b>Total</b>	-	37.9	-	-	37.9	646.8	571.4
<b>Africa</b>	<b>Algeria</b>	-	-	77.5	-	77.5	389.1	156.7
	<b>Libya</b>	-	-	52.2	-	52.2	52.2	-
	<b>Morocco</b>	-	-	-	-	-	385.7	97.1
	<b>Nigeria</b>	-	-	-	-	-	18.9	-
	<b>South Africa</b>	-	-	-	-	-	8.0	-
	<b>Tunisia</b>	-	-	26.7	-	26.7	26.7	81.9
	<b>West Africa</b>	-	-	2.7	-	2.7	8.2	-
	<b>Total</b>	-	-	159.0	-	159.0	888.9	335.6
<b>Asia</b>	<b>Indonesia</b>	-	-	-	-	-	5.0	-
	<b>Japan</b>	11.8	-	-	-	11.8	74.5	101.1
	<b>Korea, South</b>	-	-	-	-	-	-	45.2
	<b>Sri Lanka</b>	-	-	-	-	-	-	10.3
	<b>Turkey</b>	57.1	-	-	-	57.1	57.1	-
	<b>Total</b>	68.9	-	-	-	68.9	136.6	156.6
<b>Western Hemisphere</b>	<b>Colombia</b>	-	-	-	-	-	-	2.0
	<b>Costa Rica</b>	-	-	-	-	-	5.9	6.2
	<b>Cuba</b>	-	-	-	-	-	4.5	15.7
	<b>Ecuador</b>	-	-	-	-	-	2.9	-
	<b>Mexico</b>	-	-	-	-	-	-	35.9
	<b>Peru</b>	-	-	-	-	-	46.1	37.9
	<b>United States</b>	-	-	-	42.9	42.9	139.7	193.8
	<b>Venezuela</b>	-	-	23.0	-	23.0	131.6	156.2
	<b>Total</b>	-	-	23.0	42.9	65.9	330.6	447.8
<b>Total - All Countries</b>		68.9	37.9	182.0	42.9	331.8	2,002.8	1,511.5



**Clearance of Canadian Grain by Sector**  
**December 2012**  
*(in 000's of tonnes)*

<b>Oats</b>		<b>Via Thunder Bay</b>	<b>Via Eastern Elevators</b>	<b>Via Prairie Elevators</b>	<b>Total</b>	<b>2012-2013 Crop Year to Date</b>	<b>2011-2012 Crop Year to Date</b>
<b>Asia</b>	<b>Japan</b>	-	-	-	-	-	2.3
	<b>Total</b>	-	-	-	-	-	2.3
<b>Western Hemisphere</b>	<b>Ecuador</b>	-	-	-	-	4.9	5.0
	<b>Mexico</b>	-	-	0.1	0.1	2.1	3.6
	<b>Peru</b>	-	-	-	-	4.5	-
	<b>Puerto Rico</b>	-	-	-	-	2.1	2.2
	<b>United States</b>	31.2	0.0	64.2	95.5	556.0	620.3
	<b>Total</b>	31.2	0.0	64.3	95.5	569.6	631.1
<b>Total - All Countries</b>		31.2	0.0	64.3	95.5	569.6	633.4

**Clearance of Canadian Grain by Sector**  
**December 2012**  
*(in 000's of tonnes)*

<b>Barley</b>		<b>Via Pacific Seaboard</b>	<b>Via Eastern Elevators</b>	<b>Via Prairie Elevators</b>	<b>Total</b>	<b>2012-2013 Crop Year to Date</b>	<b>2011-2012 Crop Year to Date</b>
<b>Africa</b>	<b>South Africa</b>	-	-	-	-	15.8	31.5
	<b>Total</b>	-	-	-	-	15.8	31.5
<b>Asia</b>	<b>China P.R.</b>	61.8	-	-	61.8	61.8	88.8
	<b>Japan</b>	63.1	-	-	63.1	312.0	124.1
	<b>Saudi Arabia</b>	-	-	-	-	109.8	118.3
	<b>United Arab Emirates</b>	-	-	-	-	38.6	-
	<b>Total</b>	124.9	-	-	124.9	522.1	331.2
<b>Western Hemisphere</b>	<b>Colombia</b>	-	-	-	-	25.3	29.1
	<b>Ecuador</b>	-	-	-	-	-	3.2
	<b>Mexico</b>	-	-	-	-	-	14.5
	<b>United States</b>	0.3	0.0	30.6	30.9	140.2	111.0
	<b>Total</b>	0.3	0.0	30.6	30.9	165.5	157.8
<b>Total - All Countries</b>		125.1	0.0	30.6	155.8	703.4	520.5

**Clearance of Canadian Grain by Sector**  
**December 2012**  
*(in 000's of tonnes)*

<b>Rye</b>		<b>Via Prairie Elevators</b>	<b>Total</b>	<b>2012-2013 Crop Year to Date</b>	<b>2011-2012 Crop Year to Date</b>
<b>Asia</b>	<b>Japan</b>	-	-	6.8	25.9
	<b>Total</b>	-	-	6.8	25.9
<b>Western Hemisphere</b>	<b>United States</b>	3.7	3.7	39.3	44.2
	<b>Total</b>	3.7	3.7	39.3	44.2
<b>Total - All Countries</b>		3.7	3.7	46.2	70.1

**Clearance of Canadian Grain by Sector**  
**December 2012**  
*(in 000's of tonnes)*

<b>Flaxseed</b>		<b>Via Pacific Seaboard</b>	<b>Via Thunder Bay</b>	<b>Via Prairie Elevators</b>	<b>Total</b>	<b>2012-2013 Crop Year to Date</b>	<b>2011-2012 Crop Year to Date</b>
<b>Western Europe</b>	<b>Belgium</b>	-	36.0	-	36.0	36.0	17.3
	<b>Total</b>	-	36.0	-	36.0	36.0	17.3
<b>Asia</b>	<b>China P.R.</b>	26.6	-	-	26.6	45.7	37.7
	<b>Japan</b>	-	-	-	-	1.8	2.4
	<b>Total</b>	26.6	-	-	26.6	47.5	40.1
<b>Western Hemisphere</b>	<b>Mexico</b>	-	-	-	-	0.1	0.3
	<b>United States</b>	-	0.2	12.4	12.5	41.7	48.8
	<b>Total</b>	-	0.2	12.4	12.5	41.8	49.1
<b>Total - All Countries</b>		26.6	36.2	12.4	75.1	125.3	106.4

**Clearance of Canadian Grain by Sector**  
**December 2012**  
*(in 000's of tonnes)*

<b>Canola</b>		<b>Via Pacific Seaboard</b>	<b>Via Thunder Bay</b>	<b>Via Prairie Elevators</b>	<b>Total</b>	<b>2012-2013 Crop Year to Date</b>	<b>2011-2012 Crop Year to Date</b>
<b>Western Europe</b>	<b>Belgium</b>	-	-	-	-	-	19.3
	<b>France</b>	-	-	-	-	-	40.0
	<b>Portugal</b>	-	-	-	-	43.6	96.7
	<b>Total</b>	-	-	-	-	43.6	156.1
<b>Asia</b>	<b>Bangladesh</b>	-	-	-	-	8.4	107.3
	<b>China P.R.</b>	312.3	-	-	312.3	1,289.0	952.3
	<b>Japan</b>	162.3	-	-	162.3	1,025.2	967.2
	<b>Korea, South</b>	18.1	-	-	18.1	29.0	-
	<b>Pakistan</b>	-	-	-	-	-	332.9
	<b>United Arab Emirates</b>	-	-	-	-	185.6	309.6
	<b>Total</b>	492.8	-	-	492.8	2,537.3	2,669.3
<b>Western Hemisphere</b>	<b>Mexico</b>	78.8	41.1	-	119.8	747.9	753.0
	<b>United States</b>	-	-	45.1	45.1	141.4	238.6
	<b>Total</b>	78.8	41.1	45.1	165.0	889.3	991.6
<b>Total - All Countries</b>		571.5	41.1	45.1	657.7	3,470.2	3,816.9

**Clearance of Canadian Grain by Sector**  
**December 2012**  
*(in 000's of tonnes)*

<b>Soybean</b>		<b>Via Pacific Seaboard</b>	<b>Via Eastern Elevators</b>	<b>Via Atlantic Seaboard</b>	<b>Via Prairie Elevators</b>	<b>Total</b>	<b>2012-2013 Crop Year to Date</b>	<b>2011-2012 Crop Year to Date</b>
<b>Western Europe</b>	<b>Belgium</b>	-	48.0	-	-	48.0	160.8	104.5
	<b>Denmark</b>	-	-	-	-	-	9.7	19.4
	<b>France</b>	-	-	-	-	-	65.0	98.3
	<b>Germany</b>	-	62.3	-	-	62.3	125.4	47.7
	<b>Italy</b>	-	27.0	-	-	27.0	107.3	51.5
	<b>Netherlands</b>	-	110.4	25.7	-	136.2	361.3	510.9
	<b>Norway</b>	-	28.8	-	-	28.8	28.8	-
	<b>Portugal</b>	-	-	-	-	-	-	15.3
	<b>Spain</b>	-	37.4	-	-	37.4	57.9	86.4
	<b>United Kingdom</b>	-	-	-	-	-	6.4	18.5
	<b>Total</b>	-	313.9	25.7	-	339.6	922.7	952.3
<b>Africa</b>	<b>Egypt</b>	-	-	-	-	-	161.4	84.3
	<b>Total</b>	-	-	-	-	-	161.4	84.3
<b>Asia</b>	<b>China P.R.</b>	88.0	-	-	-	88.0	854.2r	146.4
	<b>Iran</b>	-	-	-	-	-	67.5	68.3
	<b>Israel</b>	-	-	-	-	-	6.1	-
	<b>Japan</b>	-	-	-	-	-	12.1	9.1
	<b>Turkey</b>	-	16.5	-	-	16.5	16.5	10.8
	<b>Vietnam</b>	-	-	-	-	-	-	65.8
	<b>Total</b>	88.0	16.5	-	-	104.5	956.4	300.4
<b>Western Hemisphere</b>	<b>Ecuador</b>	-	-	-	-	-	-	19.8
	<b>United States</b>	-	1.2	-	1.3	2.5	13.9	22.7
	<b>Total</b>	-	1.2	-	1.3	2.5	13.9	42.5
<b>Total - All Countries</b>		88.0	331.6	25.7	1.3	446.6	2,054.4	1,379.5

**Clearance of Canadian Grain by Sector**  
**December 2012**  
*(in 000's of tonnes)*

Peas		Via Pacific Seaboard	Via Thunder Bay	Via Prairie Elevators	Total	2012-2013 Crop Year to Date	2011-2012 Crop Year to Date
Western Europe	Belgium	-	9.0	-	9.0	31.4	-
	Spain	-	-	-	-	33.3	-
	<b>Total</b>	-	9.0	-	9.0	64.8	-
Asia	Bangladesh	29.4	-	-	29.4	59.4	118.7
	China P.R.	21.4	-	-	21.4	234.6	321.0
	India	25.3	-	-	25.3	413.4	563.6
	Pakistan	-	-	-	-	-	0.1
	<b>Total</b>	76.1	-	-	76.1	707.3	1,003.4
Western Hemisphere	Cuba	-	-	-	-	-	22.0
	Mexico	-	-	0.4	0.4	1.9	0.4
	United States	0.1	-	0.2	0.3	1.5	2.0
	<b>Total</b>	0.1	-	0.6	0.8	3.4	24.4
<b>Total - All Countries</b>		76.2	9.0	0.6	85.9	775.5	1,027.8

**Clearance of Canadian Grain by Sector  
December 2012  
(in 000's of tonnes)**

<b>Corn</b>		<b>Via Eastern Elevators</b>	<b>Total</b>	<b>2012-2013 Crop Year to Date</b>	<b>2011-2012 Crop Year to Date</b>
<b>Western Hemisphere</b>	<b>Puerto Rico</b>	-	-	11.0	21.5
	<b>United States</b>	6.5	6.5	18.9	1.4
	<b>Total</b>	6.5	6.5	29.9	22.8
<b>Total - All Countries</b>		6.5	6.5	29.9	22.8



**Importers of Canadian Grains  
December 2012  
(in 000's of tonnes)**

<b>Wheat</b>	<b>December 2012</b>	<b>2012-2013 Crop Year to Date</b>	<b>2011-2012 Crop Year to Date</b>
<b>United States</b>	170.0	668.3	549.4
<b>Japan</b>	149.2	624.1	420.4
<b>Indonesia</b>	152.8	433.5	348.7
<b>Mexico</b>	50.4	361.4	615.2
<b>Sri Lanka</b>	72.9	295.1	207.6
<b>China P.R.</b>	158.6	274.1	56.8
<b>Colombia</b>	27.9	227.5	402.7
<b>Peru</b>	27.5	219.9	152.5
<b>Bangladesh</b>	50.3	214.6	439.7
<b>Venezuela</b>	61.0	210.9	289.1
<b>Korea, South</b>	31.3	197.9	60.6
<b>West Africa</b>	39.1	197.5	202.6
<b>United Kingdom</b>	83.9	187.6	146.2
<b>Philippines</b>	110.4	134.9	22.6
<b>Ecuador</b>	-	132.6	140.1
<b>Nigeria</b>	41.0	131.9	109.4
<b>Saudi Arabia</b>	-	115.5	288.8
<b>Malaysia</b>	16.0	100.2	50.7
<b>Cuba</b>	-	95.0	108.1
<b>Sudan</b>	44.0	80.0	176.8
<b>Chile</b>	-	77.4	77.0
<b>Italy</b>	-	76.7	100.3
<b>Iraq</b>	-	52.5	157.5
<b>Tanzania</b>	39.3	52.5	-
<b>Vietnam</b>	3.1	47.4	-
<b>Puerto Rico</b>	18.7	41.7	37.3
<b>East Africa</b>	-	41.1	218.0
<b>United Arab Emirates</b>	-	36.0	94.9
<b>Costa Rica</b>	-	34.5	35.3
<b>Ghana</b>	-	28.2	-
<b>Portugal</b>	-	27.9	-
<b>South Africa</b>	-	22.1	35.3
<b>Mozambique</b>	12.0	22.0	-
<b>Thailand</b>	-	22.0	39.7

**Importers of Canadian Grains**  
**December 2012**  
*(in 000's of tonnes)*

Wheat	December 2012	2012-2013 Crop Year to Date	2011-2012 Crop Year to Date
<b>Kenya</b>	-	18.7	-
<b>Guyana</b>	6.6	14.7	24.1
<b>Morocco</b>	-	14.0	-
<b>Dominican Republic</b>	12.4	12.4	-
<b>Namibia</b>	-	10.7	-
<b>Belgium</b>	-	10.6	5.0
<b>Uganda</b>	-	9.9	-
<b>Spain</b>	-	3.8	-
<b>Caribbean</b>	-	-	18.7
<b>Iran</b>	-	-	27.5
<b>Netherlands</b>	-	-	11.2
<b>Taiwan</b>	-	-	1.2
<b>Total</b>	1,378.2	5,579.2	5,670.8

**Importers of Canadian Grains**  
**December 2012**  
*(in 000's of tonnes)*

<b>Durum wheat</b>	<b>December 2012</b>	<b>2012-2013 Crop Year to Date</b>	<b>2011-2012 Crop Year to Date</b>
<b>Algeria</b>	77.5	389.1	156.7
<b>Morocco</b>	-	385.7	97.1
<b>Italy</b>	-	269.0	400.0
<b>Belgium</b>	18.0	259.5	68.4
<b>United States</b>	42.9	139.7	193.8
<b>Venezuela</b>	23.0	131.6	156.2
<b>Japan</b>	11.8	74.5	101.1
<b>Spain</b>	-	65.4	-
<b>Turkey</b>	57.1	57.1	-
<b>Libya</b>	52.2	52.2	-
<b>Peru</b>	-	46.1	37.9
<b>Tunisia</b>	26.7	26.7	81.9
<b>Portugal</b>	-	22.0	-
<b>Germany</b>	19.9	19.9	37.8
<b>Nigeria</b>	-	18.9	-
<b>Netherlands</b>	-	11.0	43.2
<b>West Africa</b>	2.7	8.2	-
<b>South Africa</b>	-	8.0	-
<b>Costa Rica</b>	-	5.9	6.2
<b>Indonesia</b>	-	5.0	-
<b>Cuba</b>	-	4.5	15.7
<b>Ecuador</b>	-	2.9	-
<b>Colombia</b>	-	-	2.0
<b>Mexico</b>	-	-	35.9
<b>France</b>	-	-	22.0
<b>Korea, South</b>	-	-	45.2
<b>Sri Lanka</b>	-	-	10.3
<b>Total</b>	331.8	2,002.8	1,511.5

**Importers of Canadian Grains**  
**December 2012**  
*(in 000's of tonnes)*

Oats	December 2012	2012-2013 Crop Year to Date	2011-2012 Crop Year to Date
United States	95.5	556.0	620.3
Ecuador	-	4.9	5.0
Peru	-	4.5	-
Mexico	0.1	2.1	3.6
Puerto Rico	-	2.1	2.2
Japan	-	-	2.3
<b>Total</b>	95.5	569.6	633.4

Barley	December 2012	2012-2013 Crop Year to Date	2011-2012 Crop Year to Date
United States	30.9	140.2	111.0
Ecuador	-	-	3.2
Mexico	-	-	14.5
Japan	63.1	312.0	124.1
Saudi Arabia	-	109.8	118.3
China P.R.	61.8	61.8	88.8
United Arab Emirates	-	38.6	-
Colombia	-	25.3	29.1
South Africa	-	15.8	31.5
<b>Total</b>	155.8	703.4	520.5

Rye	December 2012	2012-2013 Crop Year to Date	2011-2012 Crop Year to Date
United States	3.7	39.3	44.2
Japan	-	6.8	25.9
<b>Total</b>	3.7	46.2	70.1

***Importers of Canadian Grains  
December 2012  
(in 000's of tonnes)***

<b>Flaxseed</b>	<b>December 2012</b>	<b>2012-2013 Crop Year to Date</b>	<b>2011-2012 Crop Year to Date</b>
<b>United States</b>	12.5	41.7	48.8
<b>Mexico</b>	-	0.1	0.3
<b>Japan</b>	-	1.8	2.4
<b>China P.R.</b>	26.6	45.7	37.7
<b>Belgium</b>	36.0	36.0	17.3
<b>Total</b>	75.1	125.3	106.4

**Importers of Canadian Grains**  
**December 2012**  
*(in 000's of tonnes)*

<b>Canola</b>	<b>December 2012</b>	<b>2012-2013 Crop Year to Date</b>	<b>2011-2012 Crop Year to Date</b>
<b>China P.R.</b>	312.3	1,289.0	952.3
<b>Japan</b>	162.3	1,025.2	967.2
<b>Mexico</b>	119.8	747.9	753.0
<b>United Arab Emirates</b>	-	185.6	309.6
<b>United States</b>	45.1	141.4	238.6
<b>Portugal</b>	-	43.6	96.7
<b>Korea, South</b>	18.1	29.0	-
<b>Bangladesh</b>	-	8.4	107.3
<b>Pakistan</b>	-	-	332.9
<b>Belgium</b>	-	-	19.3
<b>France</b>	-	-	40.0
<b>Total</b>	657.7	3,470.2	3,816.9

**Importers of Canadian Grains**  
**December 2012**  
*(in 000's of tonnes)*

<b>Soybean</b>	<b>December 2012</b>	<b>2012-2013 Crop Year to Date</b>	<b>2011-2012 Crop Year to Date</b>
<b>China P.R.</b>	88.0	854.2r	146.4
<b>Netherlands</b>	136.2	361.3	510.9
<b>Egypt</b>	-	161.4	84.3
<b>Belgium</b>	48.0	160.8	104.5
<b>Germany</b>	62.3	125.4	47.7
<b>Italy</b>	27.0	107.3	51.5
<b>Iran</b>	-	67.5	68.3
<b>France</b>	-	65.0	98.3
<b>Spain</b>	37.4	57.9	86.4
<b>Norway</b>	28.8	28.8	-
<b>Turkey</b>	16.5	16.5	10.8
<b>United States</b>	2.5	13.9	22.7
<b>Japan</b>	-	12.1	9.1
<b>Denmark</b>	-	9.7	19.4
<b>United Kingdom</b>	-	6.4	18.5
<b>Israel</b>	-	6.1	-
<b>Ecuador</b>	-	-	19.8
<b>Portugal</b>	-	-	15.3
<b>Vietnam</b>	-	-	65.8
<b>Total</b>	446.6	2,054.4	1,379.5

**Importers of Canadian Grains**  
**December 2012**  
*(in 000's of tonnes)*

<b>Peas</b>	<b>December 2012</b>	<b>2012-2013 Crop Year to Date</b>	<b>2011-2012 Crop Year to Date</b>
<b>India</b>	25.3	413.4	563.6
<b>China P.R.</b>	21.4	234.6	321.0
<b>Bangladesh</b>	29.4	59.4	118.7
<b>Spain</b>	-	33.3	-
<b>Belgium</b>	9.0	31.4	-
<b>Mexico</b>	0.4	1.9	0.4
<b>United States</b>	0.3	1.5	2.0
<b>Cuba</b>	-	-	22.0
<b>Pakistan</b>	-	-	0.1
<b>Total</b>	85.9	775.5	1,027.8



***Importers of Canadian Grains  
December 2012  
(in 000's of tonnes)***

<b>Corn</b>	<b>December 2012</b>	<b>2012-2013 Crop Year to Date</b>	<b>2011-2012 Crop Year to Date</b>
<b>United States</b>	6.5	18.9	1.4
<b>Puerto Rico</b>	-	11.0	21.5
<b>Total</b>	6.5	29.9	22.8

**Clearance of Canadian Wheat (Including Durum) and Wheat Flour †**  
**(A) Monthly Export Shipment by Clearance Sector - Crop Years 2008-2009 to 2012-2013**  
**(in 000's of tonnes)**

	2012-2013		2011-2012		2010-2011		2009-2010		2008-2009	
	December	Crop year to date	December	Crop year to date	December	Crop year to date	December	Crop year to date	December	Crop year to date
<b>Canadian Pacific Seaboard</b>	970.5	3,893.4	933.7	3,732.4	664.2	3,123.2	686.2	3,956.2	818.7	3,028.6
<b>Churchill</b>	-	322.0	-	507.8	-	600.7	-	516.8	-	424.4
<b>Thunder Bay Direct</b>	77.2	308.9	-	100.7	-	147.2	-	31.0	14.3	162.4
<b>Eastern Transfer Elevators</b>	469.7	2,397.6	449.6	2,360.8	528.3	2,253.4	538.1	2,053.7	354.2	2,352.7
<b>Canadian Atlantic Seaboard</b>	12.4	36.6	-	8.0	-	-	-	-	-	-
<b>Prairie Elevators Direct</b>	180.2	623.6	117.7	472.6	90.9	407.9	106.7	507.7	167.9	591.1
<b>Total Wheat</b>	1,710.0	7,582.0	1,501.0	7,182.3	1,283.4	6,532.4	1,331.0	7,065.3	1,355.0	6,559.1
<b>Wheat Flour</b>	-	57.6	-	84.5	-	82.6	-	78.5	-	84.4
<b>TOTAL WHEAT AND WHEAT FLOUR</b>	1,710.0	7,639.7	1,501.0	7,266.7	1,283.4	6,615.1	1,331.0	7,143.8	1,355.0	6,643.6

**Clearance of Canadian Wheat (Including Durum) and Wheat Flour †  
 (B) Total Monthly Clearances, Crop Years 2008-2009 to 2012-2013  
 (in 000's of tonnes)**

	2012-2013	2011-2012	2010-2011	2009-2010	2008-2009
<b>August</b>	1,518.9	1,356.7	1,331.6	1,392.6	1,129.5
<b>September</b>	1,583.3	1,462.0	1,252.1	1,396.9	1,075.2
<b>October</b>	1,500.9	1,408.9	1,414.4	1,499.6	1,512.1
<b>November</b>	1,326.5r	1,538.1	1,333.5	1,523.7	1,571.8
<b>December</b>	1,710.0	1,501.0	1,283.4	1,331.0	1,355.0
<b>Total</b>	7,639.7	7,266.7	6,615.1	7,143.8	6,643.6

**Custom Exports of Wheat Flour †**  
**November 2012**  
*(in metric tonnes)*

WHEAT FLOUR		November, 2012	November, 2011	2012 Crop year to date	2011 Crop year to date
Western Europe	Denmark	-	-	-	-
	France	1	23	61	34
	Germany	-	0	-	28
	Greece	30	56	320	346
	Iceland	33	33	65	130
	Italy	-	0	-	0
	Netherlands	-	0	-	0
	Switzerland	-	-	-	-
	United Kingdom	0	0	0	0
	Region Total	63	112	446	538
Eastern Europe	Armenia	0	-	0	-
	Region Total	0	-	0	-
Africa	Egypt	-	-	-	-
	French S. Ter	-	-	-	-
	Ghana	0	-	0	-
	Morocco	-	0	-	0
	Region Total	0	0	0	0
Asia	Afghanistan	-	-	-	-
	China P.R.	84	57	99	608
	Hong Kong	285	83	1,092	435
	Israel	0	0	29	0
	Japan	0	0	16	273
	Jordan	0	0	0	29
	Korea, South	147	221	492	20,075
	Lebanon	34	68	136	136
	Malaysia	-	0	-	14
	Philippines	-	0	-	0
	Singapore	20	2	119	20
	Thailand	0	0	0	-
	United Arab Emirates	-	0	-	1
	Region Total	570	432	1,982	21,591

*Custom Exports of Wheat Flour †*  
*November 2012*  
*(in metric tonnes)*

WHEAT FLOUR		November, 2012	November, 2011	2012 Crop year to date	2011 Crop year to date
Oceania	American Samoa	116	58	174	232
	Australia	52	0	217	26
	Region Total	168	58	391	258
Western Hemisphere	Anguilla	0	0	24	73
	Antigua	1	0	1	0
	Aruba	0	0	26	0
	Bahamas	426	527	1,331	1,475
	Barbados	0	0	2	1
	Bermuda	126	121	521	522
	Br. Virgin Islands	78	72	104	192
	Chile	-	0	-	3
	Costa Rica	21	52	38	78
	Cuba	0	0	0	0
	Dominica	0	0	2	1
	Dominican Republic	54	0	82	27
	Ecuador	-	0	-	0
	El Salvador	-	-	-	0
	Grenada	3	1	4	1
	Guyana	2	0	20	19
	Haiti	-	24	-	53
	Jamaica	2	0	2	9
	Montserrat	1	0	1	0
	Netherlands Antilles	135	112	385	414
	Peru	-	-	-	-
	St. Kitts-Nevis	-	0	-	0
	St. Lucia	1	3	3	6
	St. Pierre & Miquelon	39	7	112	64
	St. Vincent	2	2	2	2
	Trinidad and Tobago	1	1	1	1
Turks & Caicos Islands	44	79	94	154	
United States	12,796	13,102	52,049	59,016	
Region Total	13,732	14,103	54,804	62,110	
<b>Total</b>		14,534	14,703	57,622	84,498