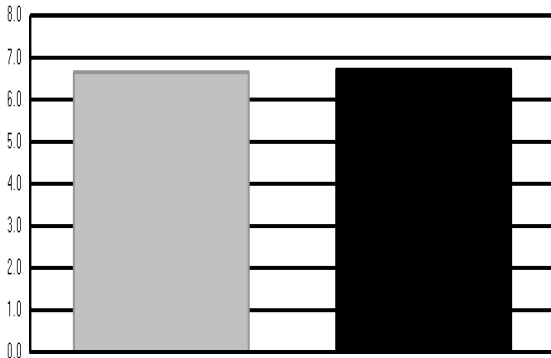




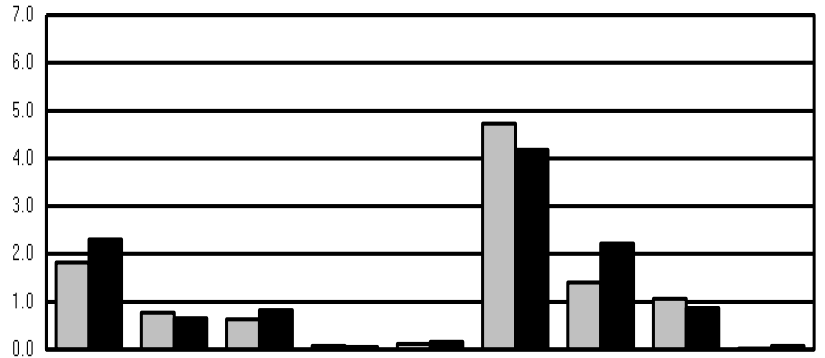
Exports of Canadian Grain and Wheat Flour

2011-2012 2012-2013

Year to date Tonnes (millions)



Wheat (except durum)



Durum Wheat Oats Barley Rye Flaxseed Canola Soybeans Peas Corn

Export clearances of Canadian grains and oilseeds during January totalled 2 669 thousand tonnes. Exports to date – 18 051 thousand - are 759 thousand tonnes (6%) more than those for the same period a year ago.

TABLE OF CONTENTS

EXPORTS OF CANADIAN GRAIN AND WHEAT FLOUR

Comparative Summary of Canadian Grain Exports.....	3
Clearance of Canadian Grain by Export Position.....	4

CLEARANCES OF CANADIAN GRAIN BY SECTOR

Table

1	Wheat.....	6
2	Durum Wheat.....	8
3	Oats.....	9
4	Barley.....	10
5	Rye.....	11
6	Flaxseed.....	12
7	Canola.....	13
8	Soybeans.....	14
9	Peas.....	15
10	Corn.....	16
11	Importers of Canadian grains.....	17
12	Clearance of Canadian Wheat (Including Durum) and Wheat Flour crop year 2008-2009 to 2012-2013.....	26
13	Custom Exports of Wheat Flour.....	28

Notes

- 1) Components in tables may not add exactly to the totals due to rounding.
- 2) In addition, Statistics Canada reported unlicensed exports to the United States: 372 900 (209 500) tonnes of Wheat excluding Durum, 277 600 (305 500) tonnes of Oats, 56 100 (29 500) tonnes of Rye 30 300 (29 900) tonnes of Flaxseed, 28 600 (92 600) tonnes of Canola, and 339 200(136 900) tonnes of Corn between August and December, 2012. Year ago figures are shown in brackets.
- 3) Grain may be re-exported to destinations beyond those reported.
- 4) All shipment tonnage will be allocated to the month of loading completion.
 - ❖ Totals may not agree due to rounding.
 - ❖ 0.0 Less than 50 tonnes
 - ❖ * Denotes vessels with more than one destination, but total tonnage is shown for only the first destination.

For further information, please contact the Corporate Services of the Canadian Grain Commission at (204) 983-1570.

**(A) Comparative Summary of Canadian Grain Exports
January 2013
(in 000's of tonnes)**

	Wheat	Durum wheat	Oats	Barley	Rye	Flaxseed	Canola	Soybean	Peas	Corn	Total
January, 2013	1,126.3	302.3	78.9	128.5	7.3	30.1	712.9	164.3	97.1	20.6	2,668.5
December, 2012	1,378.2	331.8	95.5	155.8	3.7	75.1	657.7	446.6	85.9	6.5	3,236.9
January, 2012	975.3	310.5	137.2	112.8	6.6	16.7	917.8	20.4	33.5	1.9	2,532.8
Crop Year to Date, 2012-2013	6,705.5	2,305.2	648.6	831.9	53.5	155.4	4,183.1	2,218.7	872.6	76.8	18,051.2
Crop Year to Date, 2011-2012	6,646.1	1,822.0	770.6	633.3	76.6	123.2	4,734.7	1,399.9	1,061.3	24.8	17,292.4
Calendar Year 2013	1,126.3	302.3	78.9	128.5	7.3	30.1	712.9	164.3	97.1	20.6	2,668.5
Calendar Year 2012	975.3	310.5	137.2	112.8	6.6	16.7	917.8	20.4	33.5	1.9	2,532.8

**(B) Clearance of Canadian Grain by Export Position
January 2013
(in 000's of tonnes)**

	Wheat	Durum wheat	Oats	Barley	Rye	Flaxseed	Canola	Soybean	Peas	Corn	Total
Prince Rupert	369.0	-	-	18.8	-	-	107.2	-	-	-	495.1
Vancouver	519.4	122.5	-	74.9	-	20.3	578.8	31.4	96.5	-	1,443.8
Thunder Bay	-	-	12.6	-	-	0.4	-	-	-	-	13.0
Quebec	16.5	43.6	-	-	-	-	-	92.2	-	-	152.3
Baie Comeau	65.6	26.4	-	-	-	-	-	-	-	-	92.0
Owen Sound	-	-	-	-	-	-	-	-	-	12.1	12.1
Prescott	-	-	-	0.0	-	-	-	-	-	1.1	1.2
Goderich	0.0	-	-	-	-	-	-	2.3	-	-	2.3
Sarnia	1.5	-	-	-	-	-	-	-	-	7.4	8.9
Montreal	-	24.8	-	-	-	-	-	33.0	-	-	57.8
Sorel	27.5	0.2	-	-	-	-	-	-	-	-	27.6
Three Rivers	-	20.0	-	-	-	-	-	-	-	-	20.0
Halifax	5.9	-	-	-	-	-	-	-	-	-	5.9
Prairie Elevators	120.8	64.8	66.3	34.8	7.3	9.4	26.9	5.4	0.6	-	336.4
Total	1,126.3	302.3	78.9	128.5	7.3	30.1	712.9	164.3	97.1	20.6	2,668.5

(C) Clearance of Canadian Grain by Export Position
Accumulative August 2012 to January 2013
(in 000's of tonnes)

	Wheat	Durum wheat	Oats	Barley	Rye	Flaxseed	Canola	Soybean	Peas	Corn	Total
Prince Rupert	1,462.0	2.9	-	280.2	-	-	749.5	-	-	-	2,494.6
Vancouver	3,005.7	433.7	9.4	328.0	6.8	67.7	2,937.0	356.7	860.0	-	8,005.1
Churchill	294.0	28.0	-	49.3	-	-	38.8	-	-	-	410.1
Thunder Bay	128.8	180.0	122.9	-	-	36.6	289.5	-	9.0	-	766.9
Ontario Elevators	14.2	-	2.1	-	-	-	-	201.6	-	37.3	255.2
Quebec	256.0	306.1	-	-	-	-	-	463.5	-	-	1,025.7
Baie Comeau	282.0	538.5	-	-	-	-	-	215.7	-	-	1,036.2
Owen Sound	13.8	-	-	-	-	-	-	-	-	12.1	25.9
Prescott	-	-	0.0	0.2	-	-	-	-	-	1.1	1.4
Goderich	68.1	-	-	-	-	-	-	49.9	-	-	118.0
Sarnia	71.2	-	-	-	-	-	-	-	-	26.3	97.5
Montreal	70.0	381.1	-	-	-	-	-	230.1	-	-	681.2
Port Cartier	192.5	57.3	-	-	-	-	-	160.2	-	-	410.1
Sorel	53.2	18.3	-	-	-	-	-	425.5	-	-	496.9
Three Rivers	146.7	154.6	-	-	-	-	-	75.6	-	-	376.9
Halifax	42.5	-	-	-	-	-	-	25.7	-	-	68.2
Prairie Elevators	604.7	204.6	514.1	174.3	46.7	51.0	168.3	14.2	3.6	-	1,781.3
Total	6,705.5	2,305.2	648.6	831.9	53.5	155.4	4,183.1	2,218.7	872.6	76.8	18,051.2

Clearance of Canadian Grain by Sector
January 2013
(in 000's of tonnes)

Wheat		Via Pacific Seaboard	Via Churchill	Via Thunder Bay	Via Eastern Elevators	Via Atlantic Seaboard	Via Prairie Elevators	Total	2012-2013 Crop Year to Date	2011-2012 Crop Year to Date
Western Europe	Belgium	-	-	-	-	-	-	-	10.6	5.0
	Italy	-	-	-	-	-	-	-	76.7	148.8
	Netherlands	-	-	-	-	-	-	-	-	11.2
	Portugal	-	-	-	-	-	-	-	27.9	-
	Spain	-	-	-	-	-	-	-	3.8	-
	United Kingdom	-	-	-	-	-	-	-	187.6	161.5
	Total	-	-	-	-	-	-	-	306.7	326.4
Africa	East Africa	-	-	-	-	-	-	-	41.1	218.0
	Ghana	-	-	-	-	-	-	-	28.2	-
	Kenya	-	-	-	-	-	-	-	18.7	-
	Morocco	-	-	-	-	-	-	-	14.0	-
	Mozambique	-	-	-	-	-	-	-	22.0	-
	Namibia	-	-	-	-	-	-	-	10.7	-
	Nigeria	-	-	-	27.5	-	-	27.5	159.4	109.4
	South Africa	-	-	-	-	-	-	-	22.1	35.3
	Sudan	70.9	-	-	-	-	-	70.9	150.9	176.8
	Tanzania	-	-	-	-	-	-	-	52.5	-
	Tunisia	-	-	-	1.1	-	-	1.1	1.1	-
	Uganda	-	-	-	-	-	-	-	9.9	-
	West Africa	-	-	-	27.5	-	-	27.5	225.0	240.6
	Total	70.9	-	-	56.1	-	-	127.0	755.5	780.1
Asia	Bangladesh	-	-	-	-	-	-	-	214.6	492.1
	China P.R.	132.0	-	-	-	-	-	132.0	406.1	114.5
	Indonesia	67.6	-	-	-	-	-	67.6	501.1	355.8
	Iran	-	-	-	-	-	-	-	-	27.5
	Iraq	104.5	-	-	-	-	-	104.5	157.0	313.7
	Japan	153.1	-	-	-	-	-	153.1	777.2	494.0
	Korea, South	9.9	-	-	-	-	-	9.9	207.8	82.6
	Malaysia	30.4	-	-	-	-	-	30.4	130.5	89.7
	Philippines	-	-	-	-	-	-	-	134.9	22.6
	Saudi Arabia	-	-	-	-	-	-	-	115.5	378.5
	Sri Lanka	-	-	-	-	-	-	-	295.1	280.6
	Taiwan	-	-	-	-	-	-	-	-	1.2
	Thailand	-	-	-	-	-	-	-	22.0	39.7

Clearance of Canadian Grain by Sector
January 2013
(in 000's of tonnes)

Wheat		Via Pacific Seaboard	Via Churchill	Via Thunder Bay	Via Eastern Elevators	Via Atlantic Seaboard	Via Prairie Elevators	Total	2012-2013 Crop Year to Date	2011-2012 Crop Year to Date
Asia	United Arab Emirates	74.1	-	-	-	-	-	74.1	110.1	105.3
	Vietnam	-	-	-	-	-	-	-	47.4	-
	Total	571.5	-	-	-	-	-	571.5	3,119.4	2,797.7
Western Hemisphere	Brazil	-	-	-	16.5	-	-	16.5	16.5	-
	Caribbean	-	-	-	-	-	-	-	-	28.1
	Chile	-	-	-	-	-	-	-	77.4	112.2
	Colombia	56.8	-	-	-	-	-	56.8	284.3	429.9
	Costa Rica	-	-	-	-	-	-	-	34.5	57.7
	Cuba	-	-	-	-	-	-	-	95.0	108.1
	Dominican Republic	-	-	-	-	-	-	-	12.4	-
	Ecuador	58.5	-	-	-	-	-	58.5	191.1	140.1
	Guyana	-	-	-	-	5.9	-	5.9	20.6	32.2
	Mexico	58.6	-	-	-	-	2.2	60.9	422.3	626.5
	Peru	37.0	-	-	-	-	-	37.0	257.0	201.2
	Puerto Rico	-	-	-	-	-	-	-	41.7	59.1
	United States	-	-	-	1.6	-	118.6	120.2	788.4	614.4
	Venezuela	35.0	-	-	37.0	-	-	72.0	282.9	332.3
Total	246.0	-	-	55.1	5.9	120.8	427.8	2,524.0	2,741.9	
Total - All Countries		888.4	-	-	111.1	5.9	120.8	1,126.3	6,705.5	6,646.1

Clearance of Canadian Grain by Sector
January 2013
(in 000's of tonnes)

Durum wheat		Via Pacific Seaboard	Via Churchill	Via Thunder Bay	Via Eastern Elevators	Via Atlantic Seaboard	Via Prairie Elevators	Total	2012-2013 Crop Year to Date	2011-2012 Crop Year to Date
Western Europe	Belgium	-	-	-	26.5	-	-	26.5	286.0	68.4
	France	-	-	-	-	-	-	-	-	22.0
	Germany	-	-	-	-	-	-	-	19.9	37.8
	Italy	-	-	-	-	-	-	-	269.0	400.0
	Netherlands	-	-	-	-	-	-	-	11.0	43.2
	Portugal	-	-	-	-	-	-	-	22.0	-
	Spain	-	-	-	-	-	-	-	65.4	-
	Total	-	-	-	26.5	-	-	26.5	673.3	571.4
Africa	Algeria	-	-	-	-	-	-	-	389.1	317.8
	Libya	-	-	-	-	-	-	-	52.2	-
	Morocco	29.0	-	-	24.8	-	-	53.8	439.5	124.6
	Nigeria	-	-	-	-	-	-	-	18.9	-
	South Africa	-	-	-	-	-	-	-	8.0	-
	Tunisia	-	-	-	26.4	-	-	26.4	53.1	108.7
	West Africa	-	-	-	0.2	-	-	0.2	8.4	-
	Total	29.0	-	-	51.4	-	-	80.4	969.2	551.0
Asia	Indonesia	-	-	-	-	-	-	-	5.0	-
	Japan	9.8	-	-	-	-	-	9.8	84.3	110.6
	Korea, South	-	-	-	-	-	-	-	-	45.2
	Kuwait/	21.6	-	-	-	-	-	21.6	21.6	-
	Sri Lanka	-	-	-	-	-	-	-	-	10.3
	Turkey	-	-	-	-	-	-	-	57.1	-
	United Arab Emirates	21.8	-	-	-	-	-	21.8	21.8	-
	Total	53.2	-	-	-	-	-	53.2	189.8	166.1
Western Hemisphere	Colombia	2.6	-	-	-	-	-	2.6	2.6	2.0
	Costa Rica	-	-	-	-	-	-	-	5.9	7.9
	Cuba	-	-	-	-	-	-	-	4.5	15.7
	Ecuador	-	-	-	-	-	-	-	2.9	-
	Mexico	-	-	-	-	-	2.2	2.2	2.2	35.9
	Peru	15.8	-	-	-	-	-	15.8	61.9	70.9
	United States	-	-	-	-	-	62.7	62.7	202.4	239.4
	Venezuela	22.0	-	-	37.1	-	-	59.1	190.7	161.6
	Total	40.4	-	-	37.1	-	64.8	142.3	472.9	533.5
Total - All Countries		122.5	-	-	115.0	-	64.8	302.3	2,305.2	1,822.0

Clearance of Canadian Grain by Sector
January 2013
(in 000's of tonnes)

Oats		Via Pacific Seaboard	Via Churchill	Via Thunder Bay	Via Eastern Elevators	Via Atlantic Seaboard	Via Prairie Elevators	Total	2012-2013 Crop Year to Date	2011-2012 Crop Year to Date
Asia	Japan	-	-	-	-	-	-	-	-	2.3
	Total	-	-	-	-	-	-	-	-	2.3
Western Hemisphere	Ecuador	-	-	-	-	-	-	-	4.9	5.0
	Mexico	-	-	-	-	-	1.0	1.0	3.2	27.0
	Peru	-	-	-	-	-	-	-	4.5	-
	Puerto Rico	-	-	-	-	-	-	-	2.1	2.2
	United States	-	-	12.6	-	-	65.3	77.9	633.9	734.1
	Total	-	-	12.6	-	-	66.3	78.9	648.6	768.3
Total - All Countries		-	-	12.6	-	-	66.3	78.9	648.6	770.6

Clearance of Canadian Grain by Sector
January 2013
(in 000's of tonnes)

Barley		Via Pacific Seaboard	Via Churchill	Via Thunder Bay	Via Eastern Elevators	Via Atlantic Seaboard	Via Prairie Elevators	Total	2012-2013 Crop Year to Date	2011-2012 Crop Year to Date
Africa	South Africa	-	-	-	-	-	-	-	15.8	31.5
	Total	-	-	-	-	-	-	-	15.8	31.5
Asia	China P.R.	-	-	-	-	-	-	-	61.8	162.3
	Japan	58.3	-	-	-	-	-	58.3	370.2	124.7
	Saudi Arabia	-	-	-	-	-	-	-	109.8	118.3
	United Arab Emirates	35.3	-	-	-	-	-	35.3	73.9	-
	Total	93.6	-	-	-	-	-	93.6	615.7	405.2
Western Hemisphere	Colombia	-	-	-	-	-	-	-	25.3	29.1
	Ecuador	-	-	-	-	-	-	-	-	6.3
	Mexico	-	-	-	-	-	-	-	-	20.7
	United States	0.2	-	-	0.0	-	34.8	35.0	175.1	140.5
	Total	0.2	-	-	0.0	-	34.8	35.0	200.5	196.6
Total - All Countries		93.7	-	-	0.0	-	34.8	128.5	831.9	633.3

Clearance of Canadian Grain by Sector
January 2013
(in 000's of tonnes)

Rye		Via Pacific Seaboard	Via Churchill	Via Thunder Bay	Via Eastern Elevators	Via Atlantic Seaboard	Via Prairie Elevators	Total	2012-2013 Crop Year to Date	2011-2012 Crop Year to Date
Asia	Japan	-	-	-	-	-	-	-	6.8	25.9
	Total	-	-	-	-	-	-	-	6.8	25.9
Western Hemisphere	United States	-	-	-	-	-	7.3	7.3	46.7	50.8
	Total	-	-	-	-	-	7.3	7.3	46.7	50.8
Total - All Countries		-	-	-	-	-	7.3	7.3	53.5	76.6

Clearance of Canadian Grain by Sector
January 2013
(in 000's of tonnes)

Flaxseed		Via Pacific Seaboard	Via Churchill	Via Thunder Bay	Via Eastern Elevators	Via Atlantic Seaboard	Via Prairie Elevators	Total	2012-2013 Crop Year to Date	2011-2012 Crop Year to Date
Western Europe	Belgium	-	-	-	-	-	-	-	36.0	17.3
	Total	-	-	-	-	-	-	-	36.0	17.3
Asia	China P.R.	19.4	-	-	-	-	-	19.4	65.1	37.7
	Japan	0.8	-	-	-	-	-	0.8	2.7	3.2
	Total	20.3	-	-	-	-	-	20.3	67.7	40.9
Western Hemisphere	Mexico	-	-	-	-	-	-	-	0.1	0.3
	United States	-	-	0.4	-	-	9.4	9.8	51.5	64.7
	Total	-	-	0.4	-	-	9.4	9.8	51.6	65.0
Total - All Countries		20.3	-	0.4	-	-	9.4	30.1	155.4	123.2

Clearance of Canadian Grain by Sector
January 2013
(in 000's of tonnes)

Canola		Via Pacific Seaboard	Via Churchill	Via Thunder Bay	Via Eastern Elevators	Via Atlantic Seaboard	Via Prairie Elevators	Total	2012-2013 Crop Year to Date	2011-2012 Crop Year to Date
Western Europe	Belgium	-	-	-	-	-	-	-	-	19.3
	France	-	-	-	-	-	-	-	-	40.0
	Portugal	-	-	-	-	-	-	-	43.6	96.7
	Total	-	-	-	-	-	-	-	43.6	156.1
Asia	Bangladesh	45.3	-	-	-	-	-	45.3	53.7	155.4
	China P.R.	322.1	-	-	-	-	-	322.1	1,611.1	1,236.6
	Japan	188.4	-	-	-	-	-	188.4	1,213.6	1,135.5
	Korea, South	-	-	-	-	-	-	-	29.0	-
	Pakistan	-	-	-	-	-	-	-	-	446.0
	United Arab Emirates	47.8	-	-	-	-	-	47.8	233.4	363.4
	Total	603.6	-	-	-	-	-	603.6	3,140.9	3,336.9
Western Hemisphere	Mexico	82.5	-	-	-	-	-	82.5	830.4	920.8
	United States	-	-	-	-	-	26.9	26.9	168.3	320.9
	Total	82.5	-	-	-	-	26.9	109.4	998.7	1,241.7
Total - All Countries		686.0	-	-	-	-	26.9	712.9	4,183.1	4,734.7

Clearance of Canadian Grain by Sector
January 2013
(in 000's of tonnes)

Soybean		Via Pacific Seaboard	Via Churchill	Via Thunder Bay	Via Eastern Elevators	Via Atlantic Seaboard	Via Prairie Elevators	Total	2012-2013 Crop Year to Date	2011-2012 Crop Year to Date
Western Europe	Belgium	-	-	-	-	-	-	-	160.8	104.5
	Denmark	-	-	-	-	-	-	-	9.7	19.4
	France	-	-	-	33.0	-	-	33.0	98.0	98.3
	Germany	-	-	-	-	-	-	-	125.4	47.7
	Italy	-	-	-	-	-	-	-	107.3	51.5
	Netherlands	-	-	-	-	-	-	-	361.3	527.9
	Norway	-	-	-	21.0	-	-	21.0	49.8	-
	Portugal	-	-	-	-	-	-	-	-	15.3
	Spain	-	-	-	20.0	-	-	20.0	77.9	86.4
	United Kingdom	-	-	-	-	-	-	-	6.4	18.5
	Total	-	-	-	74.0	-	-	74.0	996.7	969.4
Africa	Egypt	-	-	-	51.2	-	-	51.2	212.7	84.3
	Total	-	-	-	51.2	-	-	51.2	212.7	84.3
Asia	China P.R.	31.4	-	-	-	-	-	31.4	885.6	146.4
	Iran	-	-	-	-	-	-	-	67.5	68.3
	Israel	-	-	-	-	-	-	-	6.1	-
	Japan	-	-	-	-	-	-	-	12.1	9.1
	Turkey	-	-	-	-	-	-	-	16.5	10.8
	Vietnam	-	-	-	-	-	-	-	-	65.8
	Total	31.4	-	-	-	-	-	31.4	987.8	300.4
Western Hemisphere	Ecuador	-	-	-	-	-	-	-	-	19.8
	United States	-	-	-	2.3	-	5.4	7.7	21.5	26.1
	Total	-	-	-	2.3	-	5.4	7.7	21.5	45.8
Total - All Countries		31.4	-	-	127.5	-	5.4	164.3	2,218.7	1,399.9

Clearance of Canadian Grain by Sector
January 2013
(in 000's of tonnes)

Peas		Via Pacific Seaboard	Via Churchill	Via Thunder Bay	Via Eastern Elevators	Via Atlantic Seaboard	Via Prairie Elevators	Total	2012-2013 Crop Year to Date	2011-2012 Crop Year to Date
Western Europe	Belgium	-	-	-	-	-	-	-	31.4	-
	Spain	-	-	-	-	-	-	-	33.3	-
	Total	-	-	-	-	-	-	-	64.8	-
Asia	Bangladesh	25.0	-	-	-	-	-	25.0	84.4	118.7
	China P.R.	11.0	-	-	-	-	-	11.0	245.6	331.8
	India	29.0	-	-	-	-	-	29.0	442.4	563.6
	Japan	-	-	-	-	-	-	-	-	-
	Pakistan	-	-	-	-	-	-	-	-	0.1
	United Arab Emirates	9.4	-	-	-	-	-	9.4	9.4	-
	Total	74.4	-	-	-	-	-	74.4	781.8	1,014.1
Western Hemisphere	Cuba	22.0	-	-	-	-	-	22.0	22.0	44.0
	Mexico	-	-	-	-	-	-	-	1.9	0.6
	United States	0.1	-	-	-	-	0.6	0.7	2.1	2.6
	Total	22.1	-	-	-	-	0.6	22.7	26.1	47.2
Total - All Countries		96.5	-	-	-	-	0.6	97.1	872.6	1,061.3

Clearance of Canadian Grain by Sector
January 2013
(in 000's of tonnes)

Corn		Via Pacific Seaboard	Via Churchill	Via Thunder Bay	Via Eastern Elevators	Via Atlantic Seaboard	Via Prairie Elevators	Total	2012-2013 Crop Year to Date	2011-2012 Crop Year to Date
Asia	Japan	-	-	-	-	-	-	-	-	-
	Total	-	-	-	-	-	-	-	-	-
Western Hemisphere	Puerto Rico	-	-	-	-	-	-	-	11.0	21.5
	United States	-	-	-	20.6	-	-	20.6	65.8r	3.3
	Total	-	-	-	20.6	-	-	20.6	76.8	24.8
Total - All Countries		-	-	-	20.6	-	-	20.6	76.8	24.8

Importers of Canadian Grains
January 2013
(in 000's of tonnes)

Wheat	January 2013	2012-2013 Crop Year to Date	2011-2012 Crop Year to Date
United States	120.2	788.4	614.4
Japan	153.1	777.2	494.0
Indonesia	67.6	501.1	355.8
Mexico	60.9	422.3	626.5
China P.R.	132.0	406.1	114.5
Sri Lanka	-	295.1	280.6
Colombia	56.8	284.3	429.9
Venezuela	72.0	282.9	332.3
Peru	37.0	257.0	201.2
West Africa	27.5	225.0	240.6
Bangladesh	-	214.6	492.1
Korea, South	9.9	207.8	82.6
Ecuador	58.5	191.1	140.1
United Kingdom	-	187.6	161.5
Nigeria	27.5	159.4	109.4
Iraq	104.5	157.0	313.7
Sudan	70.9	150.9	176.8
Philippines	-	134.9	22.6
Malaysia	30.4	130.5	89.7
Saudi Arabia	-	115.5	378.5
United Arab Emirates	74.1	110.1	105.3
Cuba	-	95.0	108.1
Chile	-	77.4	112.2
Italy	-	76.7	148.8
Tanzania	-	52.5	-
Vietnam	-	47.4	-
Puerto Rico	-	41.7	59.1
East Africa	-	41.1	218.0
Costa Rica	-	34.5	57.7
Ghana	-	28.2	-
Portugal	-	27.9	-
South Africa	-	22.1	35.3
Mozambique	-	22.0	-
Thailand	-	22.0	39.7

Importers of Canadian Grains
January 2013
(in 000's of tonnes)

Wheat	January 2013	2012-2013 Crop Year to Date	2011-2012 Crop Year to Date
Guyana	5.9	20.6	32.2
Kenya	-	18.7	-
Brazil	16.5	16.5	-
Morocco	-	14.0	-
Dominican Republic	-	12.4	-
Namibia	-	10.7	-
Belgium	-	10.6	5.0
Uganda	-	9.9	-
Spain	-	3.8	-
Tunisia	1.1	1.1	-
Caribbean	-	-	28.1
Iran	-	-	27.5
Netherlands	-	-	11.2
Taiwan	-	-	1.2
Total	1,126.3	6,705.5	6,646.1

Importers of Canadian Grains
January 2013
(in 000's of tonnes)

Durum wheat	January 2013	2012-2013 Crop Year to Date	2011-2012 Crop Year to Date
Morocco	53.8	439.5	124.6
Algeria	-	389.1	317.8
Belgium	26.5	286.0	68.4
Italy	-	269.0	400.0
United States	62.7	202.4	239.4
Venezuela	59.1	190.7	161.6
Japan	9.8	84.3	110.6
Spain	-	65.4	-
Peru	15.8	61.9	70.9
Turkey	-	57.1	-
Tunisia	26.4	53.1	108.7
Libya	-	52.2	-
Portugal	-	22.0	-
United Arab Emirates	21.8	21.8	-
Kuwait/	21.6	21.6	-
Germany	-	19.9	37.8
Nigeria	-	18.9	-
Netherlands	-	11.0	43.2
West Africa	0.2	8.4	-
South Africa	-	8.0	-
Costa Rica	-	5.9	7.9
Indonesia	-	5.0	-
Cuba	-	4.5	15.7
Ecuador	-	2.9	-
Colombia	2.6	2.6	2.0
Mexico	2.2	2.2	35.9
France	-	-	22.0
Korea, South	-	-	45.2
Sri Lanka	-	-	10.3
Total	302.3	2,305.2	1,822.0

Importers of Canadian Grains
January 2013
(in 000's of tonnes)

Oats	January 2013	2012-2013 Crop Year to Date	2011-2012 Crop Year to Date
United States	77.9	633.9	734.1
Ecuador	-	4.9	5.0
Peru	-	4.5	-
Mexico	1.0	3.2	27.0
Puerto Rico	-	2.1	2.2
Japan	-	-	2.3
Total	78.9	648.6	770.6

Barley	January 2013	2012-2013 Crop Year to Date	2011-2012 Crop Year to Date
United States	35.0	175.1	140.5
Ecuador	-	-	6.3
Mexico	-	-	20.7
Japan	58.3	370.2	124.7
Saudi Arabia	-	109.8	118.3
United Arab Emirates	35.3	73.9	-
China P.R.	-	61.8	162.3
Colombia	-	25.3	29.1
South Africa	-	15.8	31.5
Total	128.5	831.9	633.3

Rye	January 2013	2012-2013 Crop Year to Date	2011-2012 Crop Year to Date
United States	7.3	46.7	50.8
Japan	-	6.8	25.9
Total	7.3	53.5	76.6

***Importers of Canadian Grains
January 2013
(in 000's of tonnes)***

Flaxseed	January 2013	2012-2013 Crop Year to Date	2011-2012 Crop Year to Date
United States	9.8	51.5	64.7
Mexico	-	0.1	0.3
Japan	0.8	2.7	3.2
China P.R.	19.4	65.1	37.7
Belgium	-	36.0	17.3
Total	30.1	155.4	123.2

Importers of Canadian Grains
January 2013
(in 000's of tonnes)

Canola	January 2013	2012-2013 Crop Year to Date	2011-2012 Crop Year to Date
China P.R.	322.1	1,611.1	1,236.6
Japan	188.4	1,213.6	1,135.5
Mexico	82.5	830.4	920.8
United Arab Emirates	47.8	233.4	363.4
United States	26.9	168.3	320.9
Bangladesh	45.3	53.7	155.4
Portugal	-	43.6	96.7
Korea, South	-	29.0	-
Pakistan	-	-	446.0
Belgium	-	-	19.3
France	-	-	40.0
Total	712.9	4,183.1	4,734.7

Importers of Canadian Grains
January 2013
(in 000's of tonnes)

Soybean	January 2013	2012-2013 Crop Year to Date	2011-2012 Crop Year to Date
China P.R.	31.4	885.6	146.4
Netherlands	-	361.3	527.9
Egypt	51.2	212.7	84.3
Belgium	-	160.8	104.5
Germany	-	125.4	47.7
Italy	-	107.3	51.5
France	33.0	98.0	98.3
Spain	20.0	77.9	86.4
Iran	-	67.5	68.3
Norway	21.0	49.8	-
United States	7.7	21.5	26.1
Turkey	-	16.5	10.8
Japan	-	12.1	9.1
Denmark	-	9.7	19.4
United Kingdom	-	6.4	18.5
Israel	-	6.1	-
Ecuador	-	-	19.8
Portugal	-	-	15.3
Vietnam	-	-	65.8
Total	164.3	2,218.7	1,399.9

Importers of Canadian Grains
January 2013
(in 000's of tonnes)

Peas	January 2013	2012-2013 Crop Year to Date	2011-2012 Crop Year to Date
India	29.0	442.4	563.6
China P.R.	11.0	245.6	331.8
Bangladesh	25.0	84.4	118.7
Spain	-	33.3	-
Belgium	-	31.4	-
Cuba	22.0	22.0	44.0
United Arab Emirates	9.4	9.4	-
United States	0.7	2.1	2.6
Mexico	-	1.9	0.6
Pakistan	-	-	0.1
Total	97.1	872.6	1,061.3

***Importers of Canadian Grains
January 2013
(in 000's of tonnes)***

Corn	January 2013	2012-2013 Crop Year to Date	2011-2012 Crop Year to Date
United States	20.6	65.8r	3.3
Puerto Rico	-	11.0	21.5
Total	20.6	76.8	24.8

Clearance of Canadian Wheat (Including Durum) and Wheat Flour †
(A) Monthly Export Shipment by Clearance Sector - Crop Years 2008-2009 to 2012-2013
(in 000's of tonnes)

	2012-2013		2011-2012		2010-2011		2009-2010		2008-2009	
	January	Crop year to date	January	Crop year to date	January	Crop year to date	January	Crop year to date	January	Crop year to date
Canadian Pacific Seaboard	1,010.9	4,904.4	512.9	4,245.3	674.7	3,798.0	784.6	4,740.8	770.5	3,799.1
Churchill	-	322.0	-	507.8	-	600.7	-	516.8	-	424.4
Thunder Bay Direct	-	308.9	-	100.7	-	147.2	-	31.0	-	162.4
Eastern Transfer Elevators	226.1	2,623.7	635.1	2,995.9	301.6	2,555.0	324.9	2,378.6	407.9	2,760.6
Canadian Atlantic Seaboard	5.9	42.5	8.0	16.0	-	-	-	-	-	-
Prairie Elevators Direct	185.7	809.3	129.7	602.3	74.5	482.4	149.3	657.0	207.2	798.3
Total Wheat	1,428.6	9,010.6	1,285.8	8,468.0	1,050.9	7,583.3	1,258.9	8,324.2	1,385.7	7,944.8
Wheat Flour	-	68.1	-	98.2	-	102.0	-	98.5	-	98.1
TOTAL WHEAT AND WHEAT FLOUR	1,428.6	9,078.7	1,285.8	8,566.2	1,050.9	7,685.3	1,258.9	8,422.6	1,385.7	8,043.0

**Clearance of Canadian Wheat (Including Durum) and Wheat Flour †
 (B) Total Monthly Clearances, Crop Years 2008-2009 to 2012-2013
 (in 000's of tonnes)**

	2012-2013	2011-2012	2010-2011	2009-2010	2008-2009
August	1,518.4r	1,356.7	1,331.6	1,392.6	1,129.5
September	1,582.8r	1,462.0	1,252.1	1,396.9	1,075.2
October	1,500.4r	1,408.9	1,414.4	1,499.6	1,512.1
November	1,326.0r	1,538.1	1,333.5	1,523.7	1,571.8
December	1,722.5r	1,514.7	1,302.8	1,351.0	1,368.7
January	1,428.6	1,285.8	1,050.9	1,258.9	1,385.7
Total	9,078.7	8,566.2	7,685.3	8,422.6	8,043.0

Custom Exports of Wheat Flour †
December 2012
(in metric tonnes)

WHEAT FLOUR		December, 2012	December, 2011	2012 Crop year to date	2011 Crop year to date
Western Europe	Denmark	32	0	32	0
	France	2	2	60	35
	Germany	-	0	-	28
	Greece	21	22	329	368
	Iceland	0	0	63	130
	Italy	-	0	-	0
	Netherlands	-	0	-	0
	United Kingdom	-	0	-	0
	Region Total	54	23	484	561
Eastern Europe	Armenia	0	0	0	0
	Region Total	0	0	0	0
Africa	French S. Ter	-	0	-	0
	Ghana	0	0	0	0
	Guinea	2	-	2	-
	Morocco	-	0	-	0
	Region Total	2	0	2	0
Asia	Afghanistan	-	0	-	0
	China P.R.	-	204	95	812
	Hong Kong	339	456	1,392	891
	Israel	0	0	28	0
	Japan	0	0	15	273
	Jordan	0	0	0	29
	Korea, South	314	192	788	20,267
	Lebanon	0	34	131	170
	Malaysia	-	0	-	14
	Philippines	-	0	-	0
	Singapore	11	6	126	26
	Thailand	0	0	0	0
	United Arab Emirates	-	0	-	1
Region Total	664	892	2,575	22,482	

Custom Exports of Wheat Flour †
December 2012
(in metric tonnes)

WHEAT FLOUR		December, 2012	December, 2011	2012 Crop year to date	2011 Crop year to date
Oceania	American Samoa	-	0	168	232
	Australia	0	79	209	106
	Region Total	0	79	377	338
Western Hemisphere	Anguilla	18	0	41	73
	Antigua	-	0	1	0
	Aruba	24	25	49	25
	Bahamas	219	289	1,503	1,764
	Barbados	0	0	2	1
	Bermuda	114	155	616	677
	Br. Virgin Islands	25	25	126	217
	Chile	-	0	-	3
	Costa Rica	-	0	37	68
	Cuba	0	0	0	0
	Dominica	0	0	2	1
	Dominican Republic	-	0	79	27
	Ecuador	-	0	-	0
	Grenada	0	1	4	2
	Guyana	0	1	20	20
	Haiti	-	0	-	53
	Jamaica	1	2	3	11
	Montserrat	0	0	1	0
	Netherlands Antilles	137	54	508	469
	St. Kitts-Nevis	-	0	-	0
	St. Lucia	2	0	4	7
	St. Vincent	-	0	-	3
	Trinidad and Tobago	-	3	1	4
	Turks & Caicos Islands	-	22	90	177
United States	11,229	12,152	61,411	71,168	
Region Total	11,789	12,730	64,629	74,768	
Total	12,511	13,725	68,067	98,149	