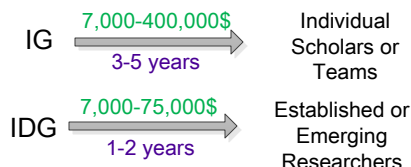


Evaluation Summary of SSHRC's Insight Grants and Insight Development Grants

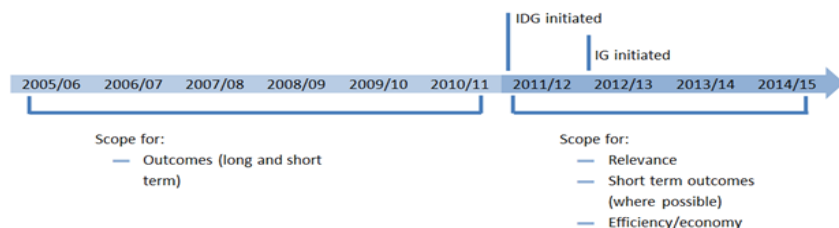
Insight Grants (IG) and Insight Development Grants (IDG)

- Build knowledge and understanding from diverse perspectives through support for the best researchers
- Support new approaches to research, including those that transcend the capacity of any one scholar, institution or discipline
- Provide a high-quality research training experience for students
- Fund research expertise that relates to societal challenges and opportunities
- Mobilize research knowledge, across audiences, with the potential to lead to intellectual, cultural, social and economic influence, benefit and impact



Evaluation Scope and Methodology

- Nine lines of evidence: a document review, a literature review, an administrative data review (including applications and final research reports), a cost-efficiency analysis, key informant interviews, a researcher survey, a student survey, focus groups, and case studies
- Data were analysed and synthesized in order to assess relevance and performance



Evaluation Findings

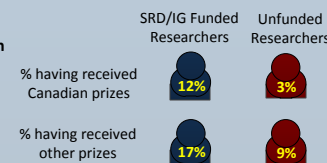
Relevance

- Without IG/IDG funding, proposed SSH research was often not completed as planned
- There continues to be a high level of demand for these grants, and IDG funding in particular fills a unique need for emerging researchers across Canada
- IG/IDG objectives are aligned with federal government priorities (e.g., *Seizing Canada's Moment: Moving Forward in Science, Technology and Innovation 2014*) and directly support SSHRC's primary strategic outcome for 2013-16, which is "to make Canada a world leader in SSH research and research training"

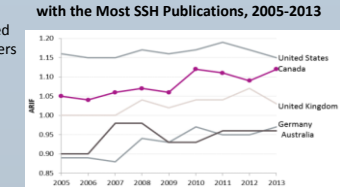
Effectiveness

Research Excellence

Funded researchers have received more prestigious prizes than unfunded researchers. Canada's high scientific impact and high standing in SSH research internationally may also be linked to SSHRC funding.



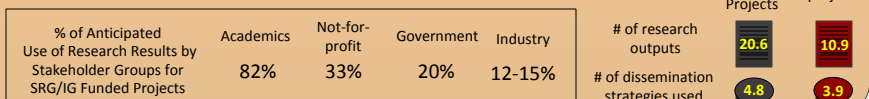
Average of Relative Impact Factors of Countries with the Most SSH Publications, 2005-2013



Dissemination and Use of Research Results

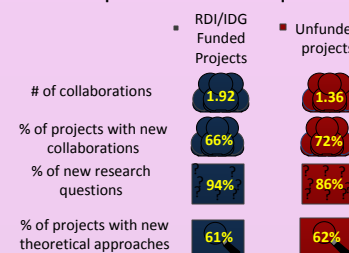
There is limited systematic information available on stakeholder use and on the subsequent benefits of project results. There is a perception among researchers that uptake and use of research results varies across funded projects with different stakeholder groups

The number of research outputs and dissemination strategies were increased for SRG/IG funded projects



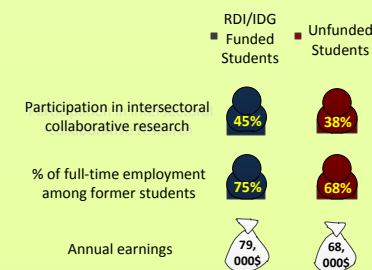
Research Capacity

RDI/IDG funding supports and enhances research collaborations but does not lead to an increase in new collaborations. RDI/IDG funding also enables the development of new research questions



Training

RDI/IDG funding improves student satisfaction with their research training and boosts career outcomes



Recommendations

- Recommendation 1:** IG and IDG Should continue to receive federal support as they remain clearly relevant to support SSH research in Canada, are making effective contributions to expected outcomes, and are managed efficiently.
- Recommendation 2:** SSHRC should continue to encourage knowledge mobilization of SSH research by improving monitoring of knowledge uptake/use if feasible and by promoting achievements and best practices.
- Recommendation 3:** SSHRC should follow up with trainees hired through IDG and IG to collect more robust information on training experiences and career outcomes if feasible.
- Recommendation 4:** IG/IDG program management should continue to investigate the impacts of grant amounts, success rates and teleconference adjudication on the achievement of outcomes.